

**Lookout House**  
**Plan L-4**  
**3/17/'30**      **Sheet 2 of 2**

**Bill of Material (pg1)**

<u>Item No.</u>	<u>No. Pcs.</u>	<u>Dimensions</u>	<u>Use</u>	<u>Yard Material List</u>
1	4	2x6-7'	Box Sills	2 - 2x6-14
2	24	2x6-6' 10 1/2"	Floor Joist	12 - 2x6-14
3	14	1x6-2'	Splice, Floor Joist	x 1 - 1x6-12
4	126	1x8-4'	Floor, and 1/2 of Loft	42 - 1x8-12
5	16	2x4-7'	Floor Plates and Window Headers	8 - 2x4-14
6	4	4x4-6' 3 1/2"	Corner Posts	2 - 4x4-14
7	1	2x4-6' 3 1/2"	Door Stud	1 - 2x4-10
8	46 <sup>1</sup>	2x4-2' 8 3/4"	Short Studs	9 - 2x4-12
9	4	2x6-6' 1 5/8"	Cap Plate Member	2 - 2x6-14
10	4	2x4-8'	Cap Plate Member	2 - 2x6-16
11	4	2x4-5' 10 3/8"	Cap Plate Member	
12	4	2x4-8'	Cap Plate Member	4 - 2x4-14
13	18	2x4-7'	Ceiling Joist	9 - 2x4-14
14	65 <sup>2</sup>	1x8-4' 10"	Shiplap diagonal lining under sindows on inside	4 - 1x6-16
15	44	2x4-4' 10"	Rafters	22 - 2x4-10
16	62	1x4-2'	Splice, Rafters and Ceiling Joist	8 - 1x4-16
17	2	2x4-5'	Cable Studs	1 - 2x4-10
18	4	2x4-4'	Cable Studs	1 - 2x4-16
19	4	2x4-3'	Cable Studs	
20	4	2x4-2'	Cable Studs	2 - 2x4-10
21	8	1x6-4' 6"	Rafter Sway Brace	x 8 - 1x6-12
22	20	1x4-1' 4"	Fillers between Rafters	2 - 1x4-12
23	4	7'	Drip Gap - Gables Over Belt Plate	2 - 14
24	42	1x6-4'	Drop Siding - Gables	14 - 1x6-12
25	132	1x8-4'	Roof Sheathing	44 - 1x8-12
26	8	1x2-5'	Shingle Strip	4 - 1x2-10
27	2500		□□□ Shingles (Perfects are better)	
28	6	1x4-5' 6"	Ridge Boards	2 - 1x4-12
29	3		Side Hill Sash Frame 13' 4" 3/4"x3' 0" -	

				1 1/8 for 5 Sash, 10"x16" 6 lt. 3x2 -	
				1 1/8 (No head Casing)	
30	1			Side Hill Sash Frame 10' 9"x3' - 1 1/8 for	
				4 Sash, 10"x16" 6 lt. 3x2-1 1/8 (No head Casing)	
31	1			Door Frame 2' 4"x6' 2"-1 3/8 (No head Casing)	
				(see detail drawing)	
32	108	1x6-4'		Drop Siding - Walls	36 - 1x6-12
33	7	1x6-3' 6"		Corner Boards or Casing	2 - 1x6-14
34	8	1x6-3' 9"		Corner Boards or Casing	2 - 1x6-16
35	1	1x6-6' 6"		Corner Boards or Casing	1 - 1x6-10
36	1	1x4-3' 6"		Corner Boards or Casing	1 - 1x4-16
37	19			6 light 10x16x1-1/8 Barn Sash	
38	1	2' 4"x6' 6"x1 3/8"		3 Panel 1-light Door	
39	40	1x8-7'	Shiplap	Shutters, 3 sides and Door	20 - 1x8-14
40	12	1x8-5' 6"	Shiplap	Shutters, Front Windows	6 - 1x8-12
41	30	1x8-4'	Shiplap	Table, Shelves, etc.	10 - 1x8-12
42	3			Rolls (250') Tar Paper	
43	8 pcs.			14 Guage 5"x12" Gal. Iron (as per detail)	
44	7 doz.			3/4x8 Wood Screws	
45	10 lbs.			3d Blued Shingle Nails	
46	35 lbs.			8d Box	
47	10 lbs.			8d Casing	
48	20 lbs.			16d Com.	
49	1			Rim Lock Set	
50	1 Pr.			3 1/2x3 1/2 Steel Butts	
51	1			1/3 Pitch Gal. Roof Jack	
52	1 gal.			Forest Drab Paint	
53	1 gal.			Ivory White Paint	
54	36			2" Gate Hooks	

**Transcription Notes:**

<sup>1</sup> Originally read 38 pieces, but was stricken and 46 was added by hand

<sup>2</sup> Originally read 8 pieces, 1x8-4' 10" End or Side Sway Brace

**Lookout House**  
**Plan L-4**  
**3/17/'30      Sheet 2 of 2**

**Bill of Material (pg. 2)**

			<b><u>YARD LIST</u></b>	<b><u>Bd. Ft.</u></b>
2	4x4-14	#1 F&L or Cedar		37
2	2x6-16			32
16	2x6-14			224
1	2x4-16			11
21	2x4-14			196
9	2x4-12			72
26	2x4-10			173
Total Dimension				745
6	1x6-16	#2 Comm.		48
4	1x6-14	"		28
9	1x6x12	"		54
1	1x6-10	"		5
9	1x4-16	"		48
4	1x4-12	"		16
4	1x2-10	"		7
Total Finish				206
20	1x8-14	#2 Com. Shiplap Pine or Cedar		187
102	1x8-12	#2 Com. Shiplap Pine or Cedar		816
				1003
50	1x6-12	"D" Select Pine or Cedar Siding		300
28	lin. ft.	<u>Drip Cap</u>		
<b>TOTAL</b>				2254

**Lookout House**

**Plan L-4**

**3/17/'30**

**Sheet 2 of 2**

**SPECIFICATIONS**

Foundation:

Rock rubble wall, laid up dry and pointed with mortar when material is available.

Framing:

The framing detail is fairly clear as shown by the plan. The corner posts are 4x4. The top plate consists of a 2x6 and a 2x4 spiked together and sent edgewise down over the corner posts, the 2x4 riding the post and the 2x6 fitting around the exterior sides of the post. The 2x6 also serves as a belt course or trim for the building as well as a head casing for the window and door frames.

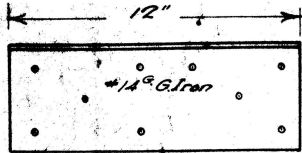
The window sills and head jambs are cut in the center to secure a suitable length for packing. They are to be spliced with a galvanized iron plate as shown by the detail drawing. The window sash stiles at the overlap joints should be planed down to 1 1/2 inch. This was necessary in order to fit regular sash to the 14 foot dimension material. The post 1 1/2x2 is to be set in the frame on the outside of the sash at each joint to stiffen the header jamb and keep the sash from pinching.

It is suggested that if the siding is put on backward, i.e., beginning under the window, that it will be possible to secure a tighter fit than if it is run up from the bottom in the normal way. Use plenty of tar paper under the siding in order to close all joints tightly. A piece of drip cap moulding should be put on over the end plate before the siding is put on the gables.

The door will be a regular 2' 4"x6' 6"x1-3/8", 3 panel 1 light pine door with 3 inches cut off the bottom rail and one inch off the top rail.

The floor will be 1x8 shiplap which after a few years' wear may be covered with 4 or 6 inch flooring. In making up the shutters it will be necessary to rip one board. Use this strip for battens. The window shutters should be made up in two sections for each side. They may be hung on hinges at the top side and when raised, set on posts so as to provide an awning for shading the interior.

The building should be painted with the standard colors as soon as completed.



DETAIL SPICE PLATE

Scale 2" = 1'

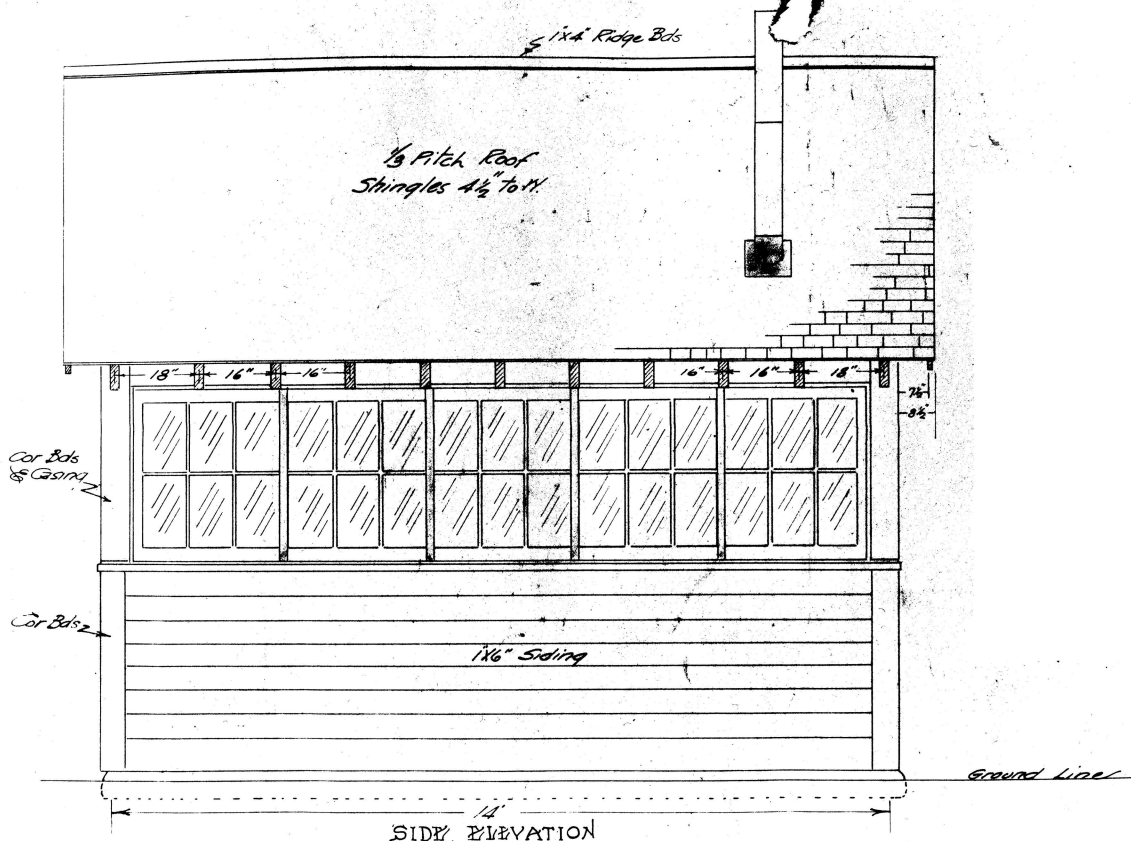
U.S. DEPT OF AGRICULTURE  
FOREST SERVICE

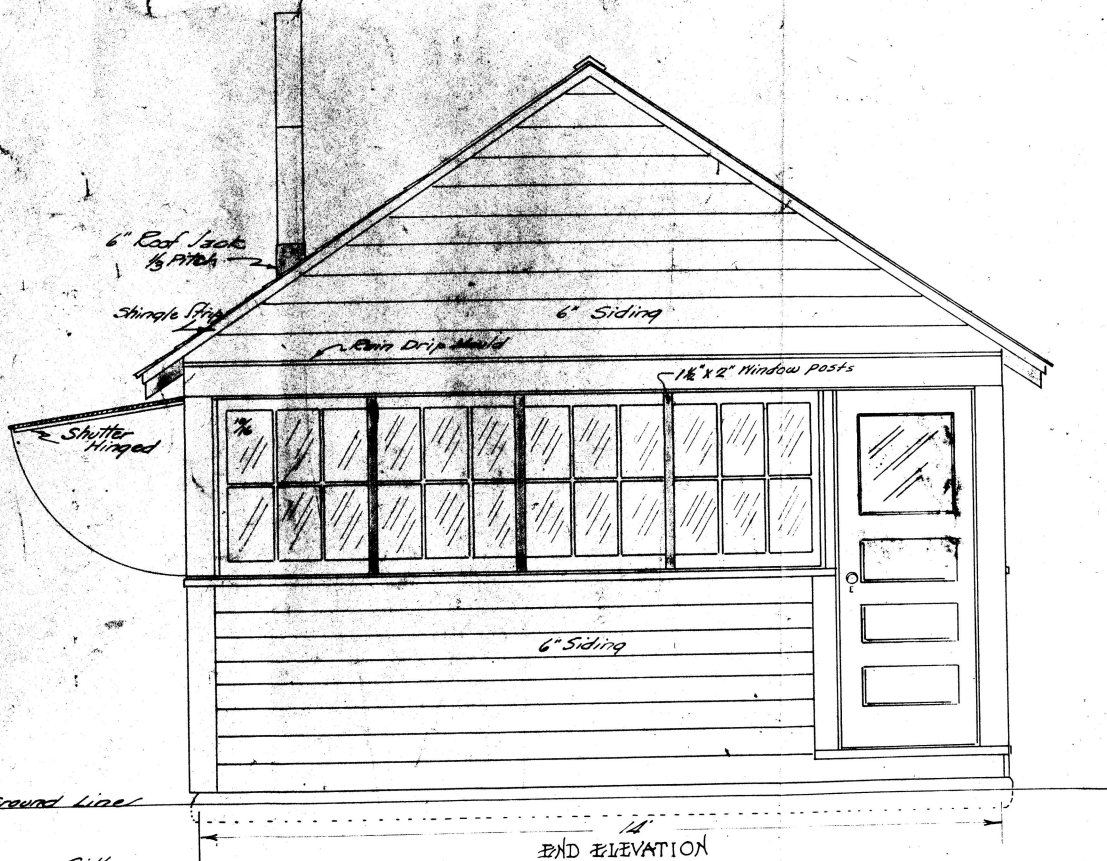
LOOKOUT HOUSE  
PLAN L-4

Approved by *Fred Morrell*

Designed G.P. FICKES

Tr. by J.P. Hahn 10/1/35 Sheet 1 of 2.





6" Roof 1/2 pitch

Shingle Flap

6" Siding

Rain Drip Mould

1 1/2" x 2" Window posts

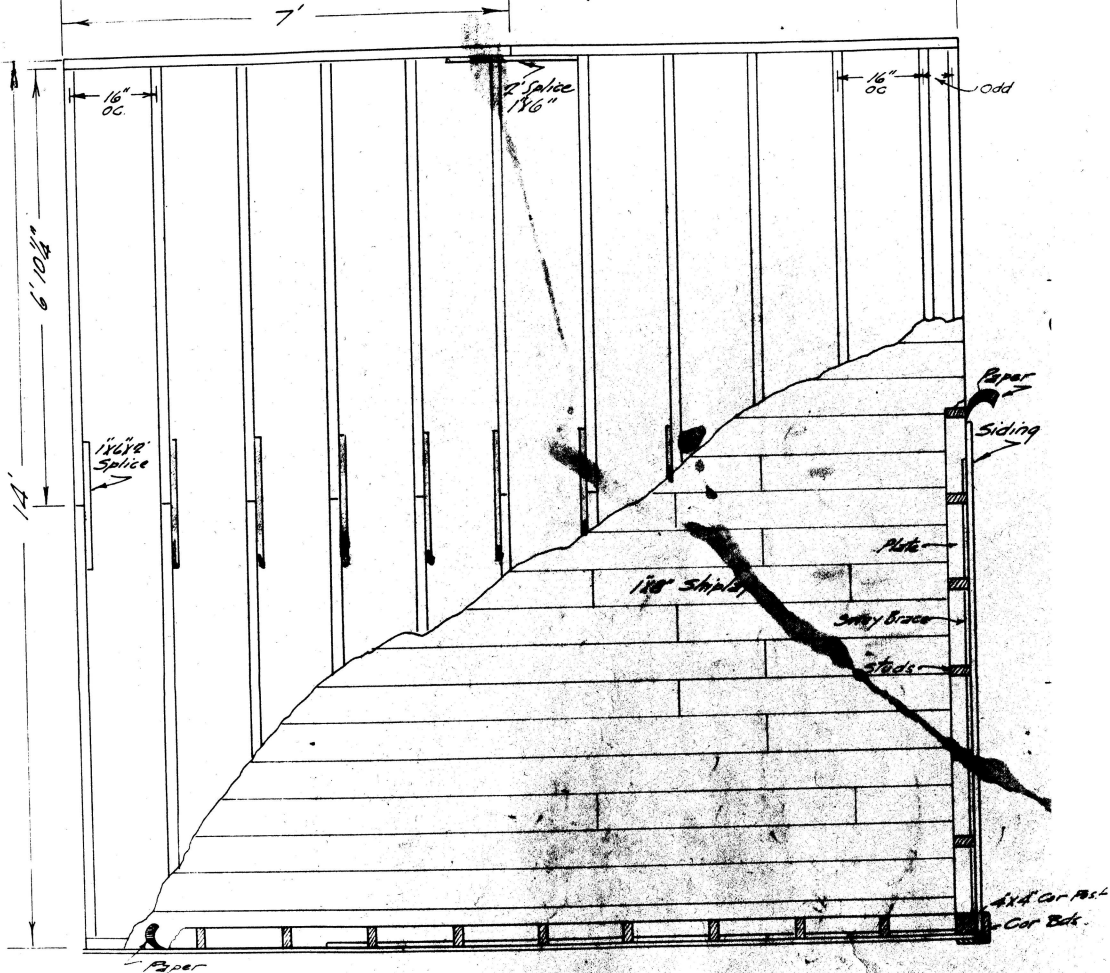
Shutter Hinged

6" Siding

Ground Line

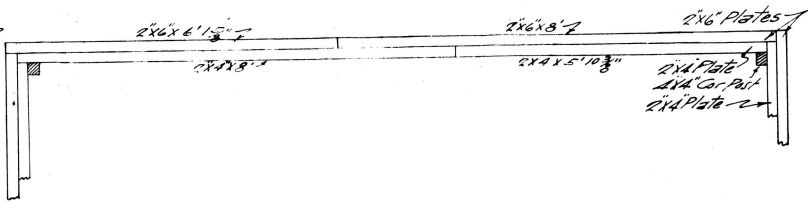
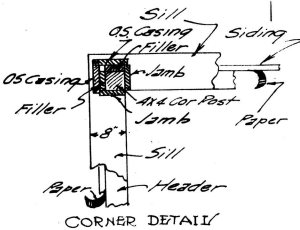
Sill

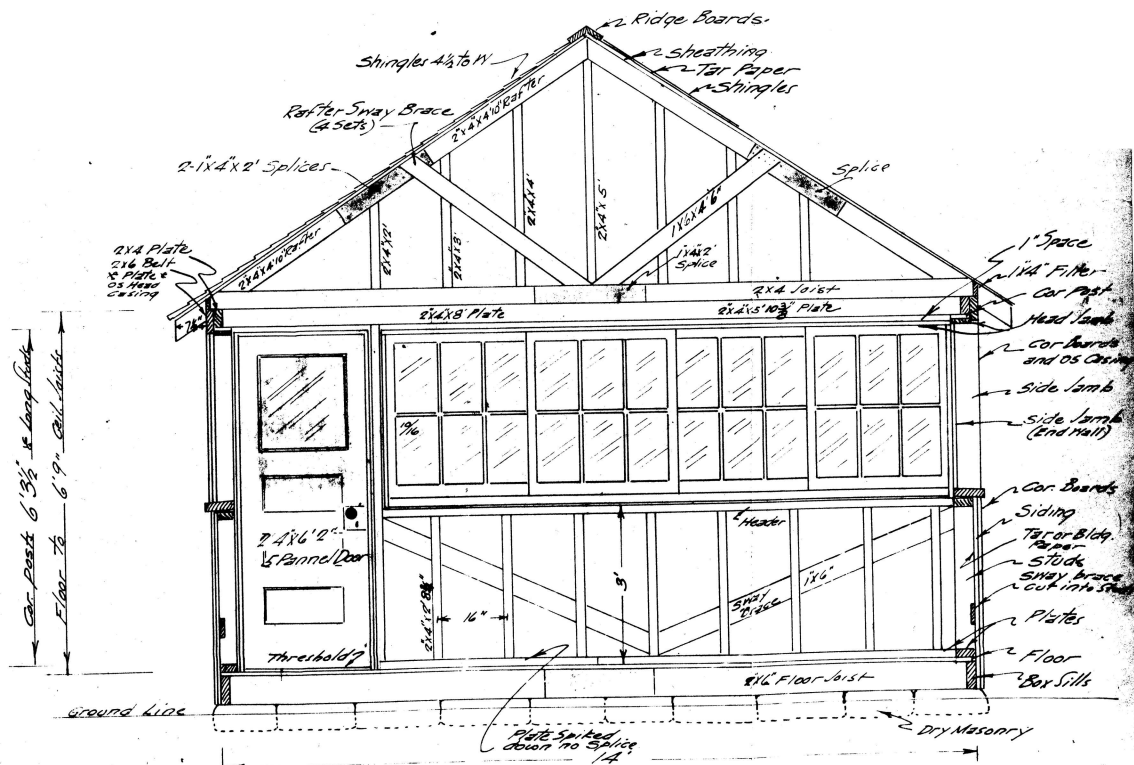
14  
END ELEVATION



FLOOR DETAIL







CROSS SEC DETAIL