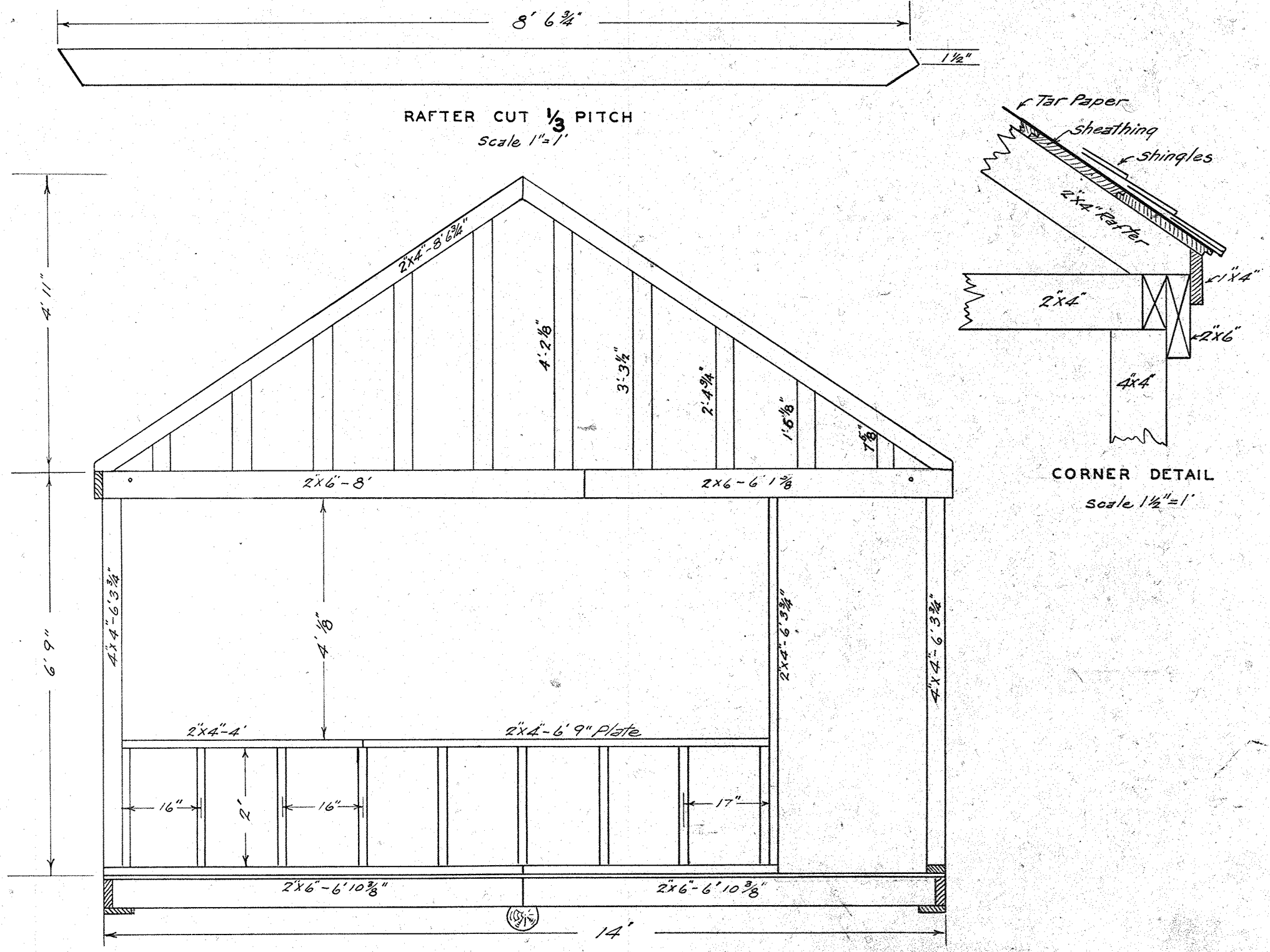
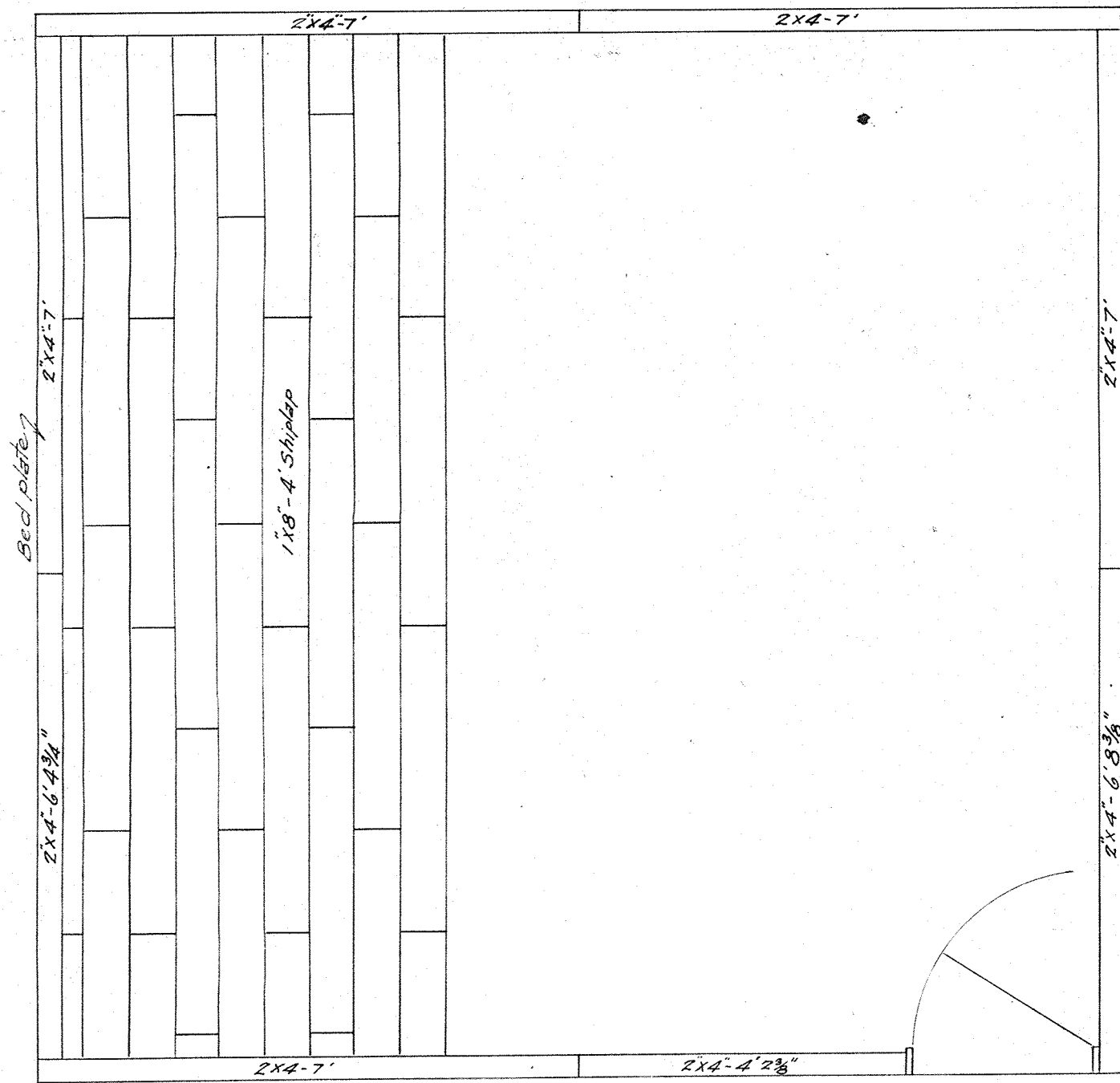


JOIST FRAMING PLAN

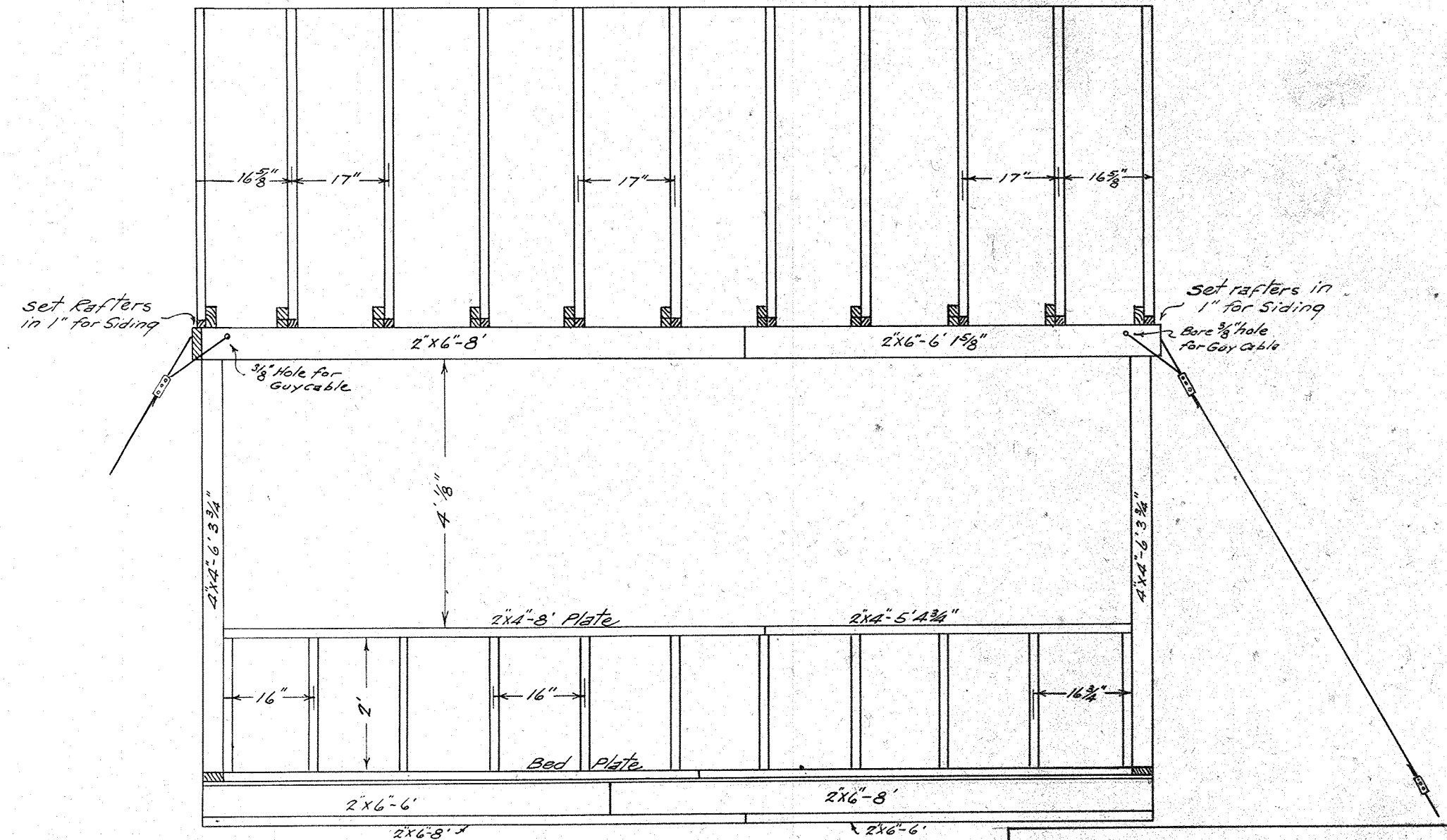


FRONT FRAMING DETAIL



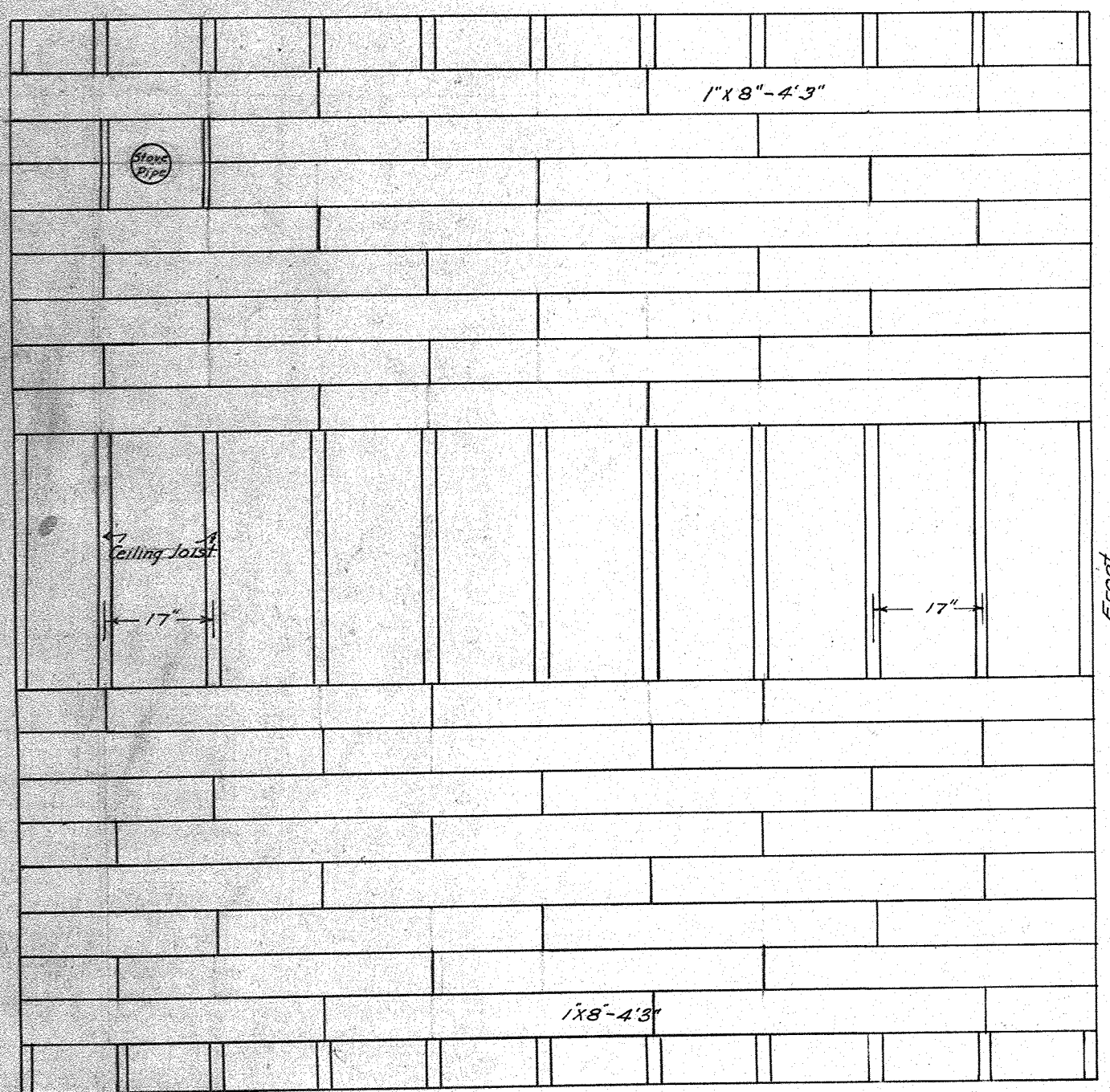
FLOOR PLAN

Scale 1"=2'

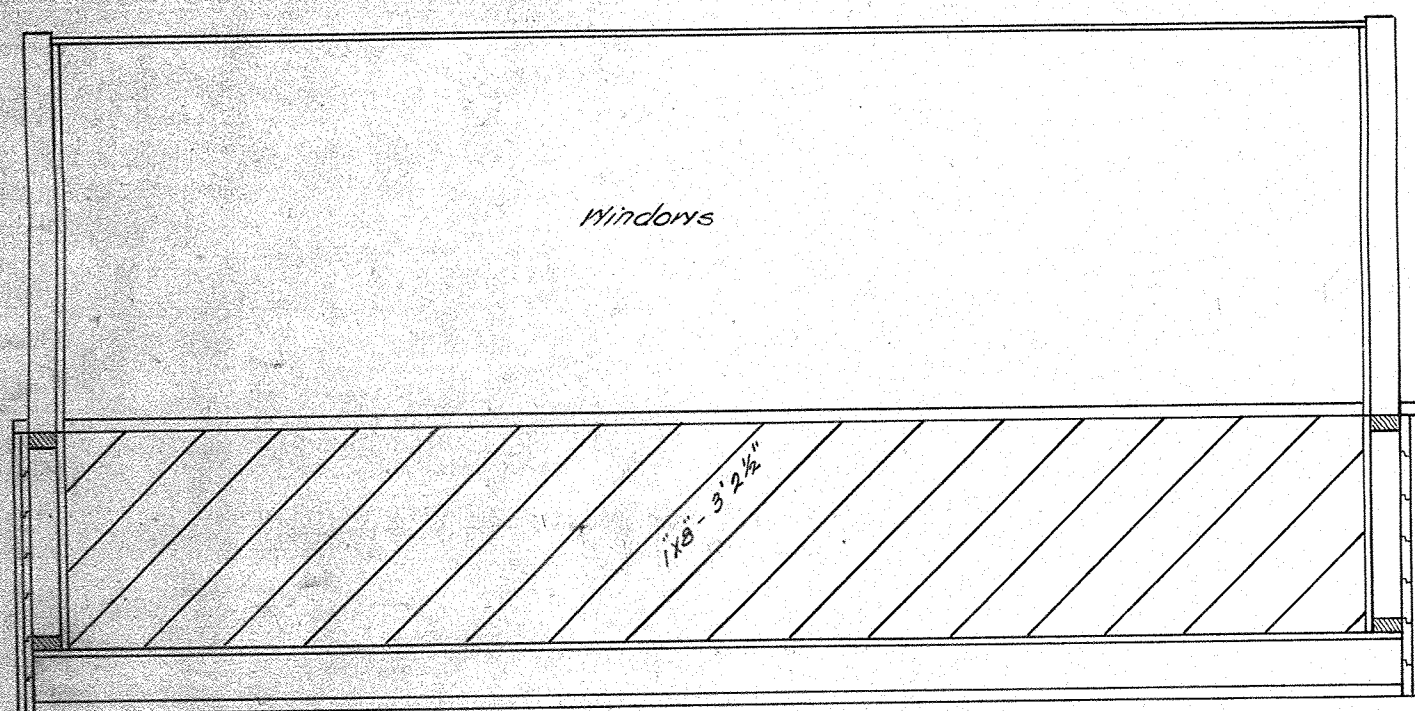


SIDE FRAMING PLAN

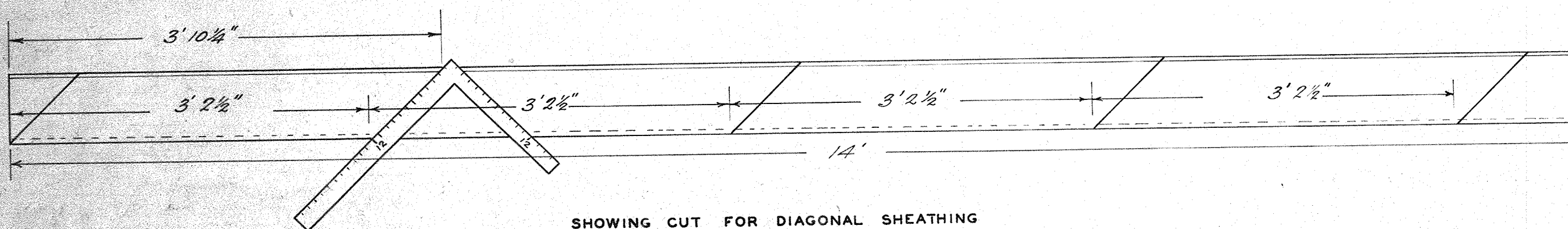
U. S. DEPT. OF AGRICULTURE
 FOREST SERVICE REGION NO. 1.
LOOKOUT HOUSE
 PLAN L-4 1931 REVISION
 DESIGNED BY C. P. FICKES
 APPROVED BY *C. C. Stockdale*
 Asst. Reg. Forester
 DEC. 1930. SHEET 1 C



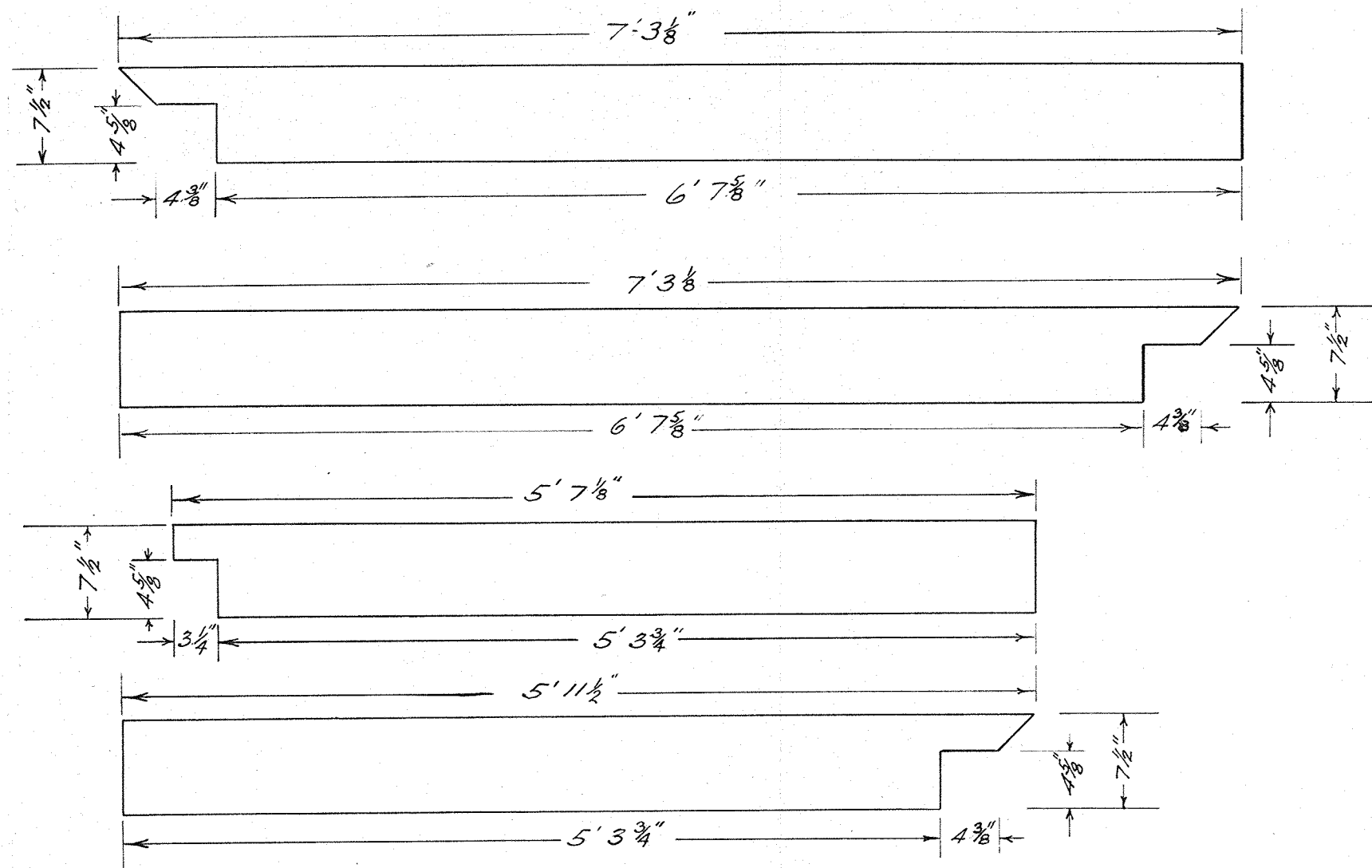
FLOORING ARRANGEMENT FOR LOFT



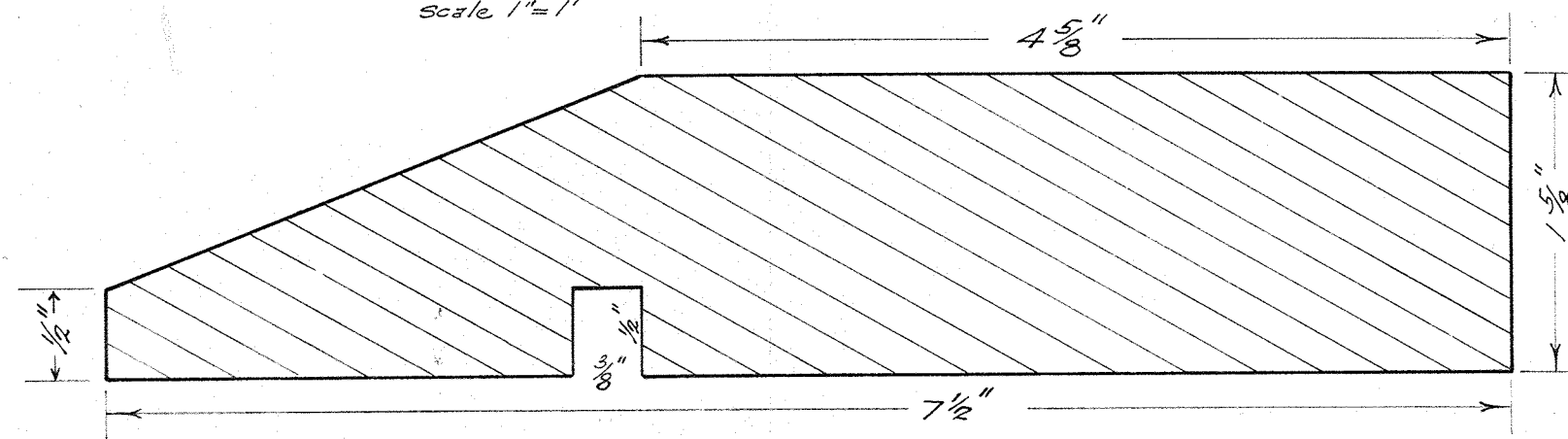
CROSS SECTION SHOWING DIAGONAL SHEATHING
Scale 1"=2'



SHOWING CUT FOR DIAGONAL SHEATHING
Scale 1"=1'



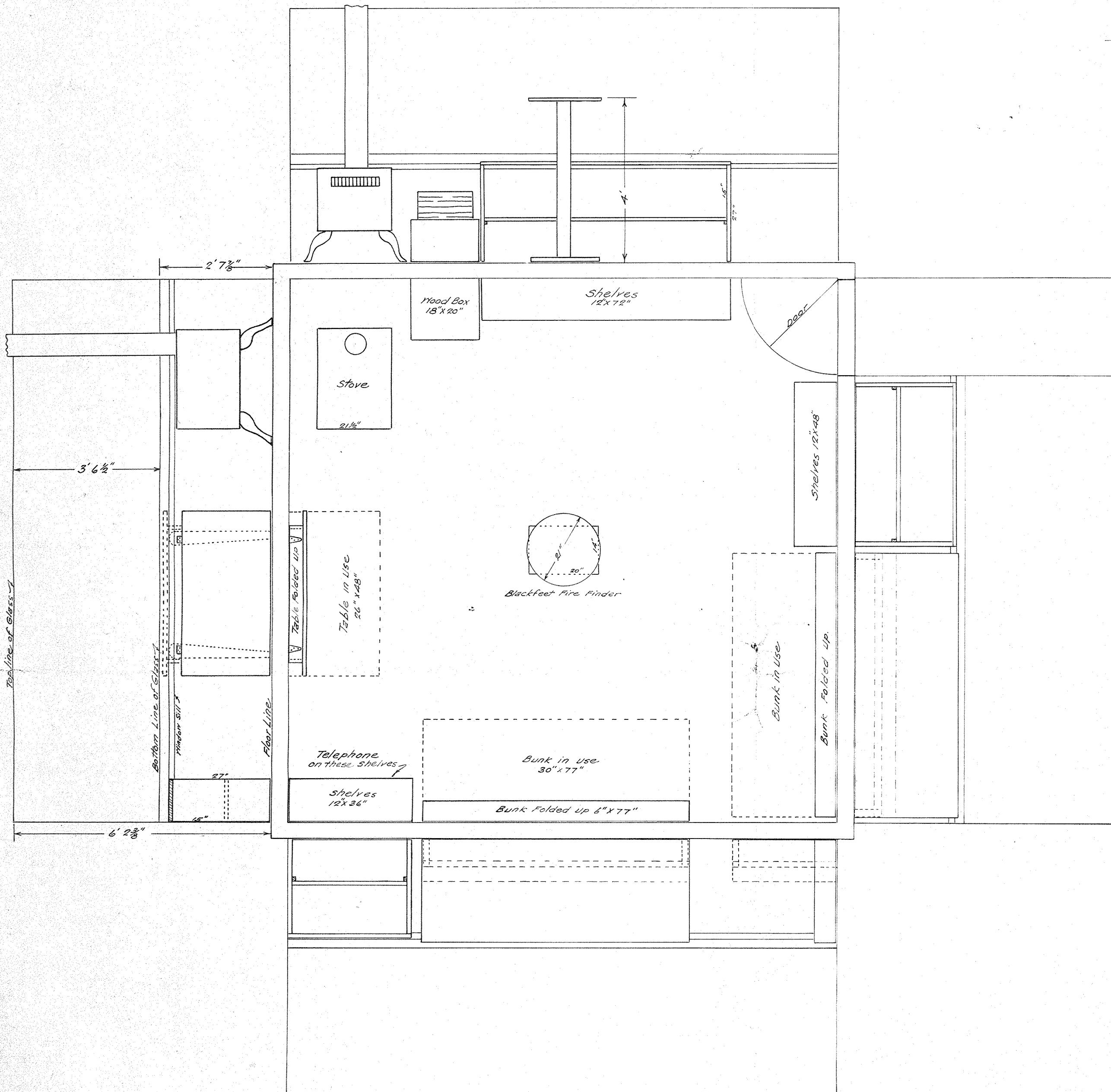
WINDOW SILL SECTIONS
Scale 1"=1'



CROSS SECTION WINDOW SILL - FULL SIZE

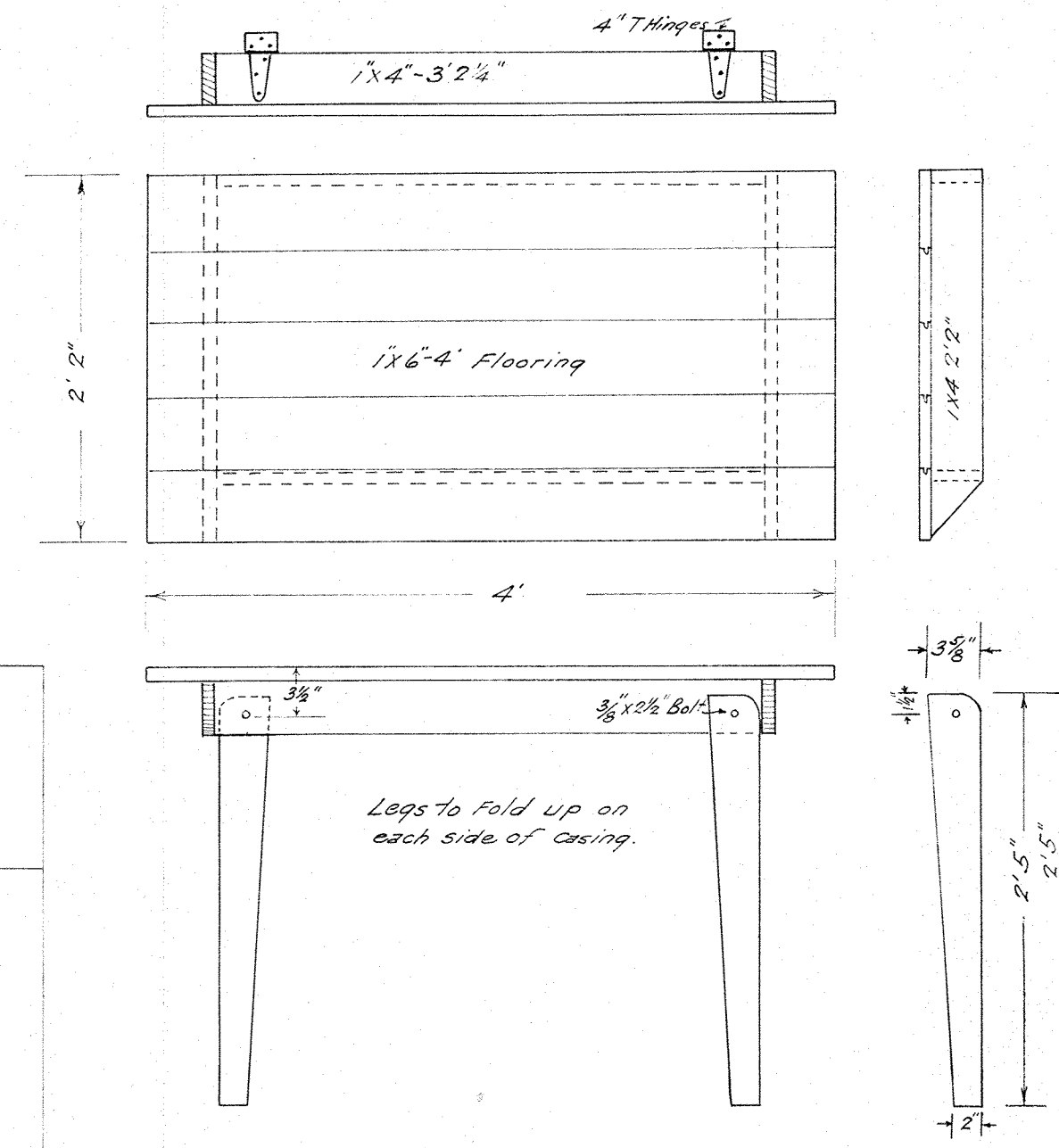
MATERIAL LIST FOR WINDOW FRAMES

Quantity	Material	Description	Actual Size
3	1 5/8" x 7 1/2" - 7' 3 1/8"	Left Hand sill	
3	1 5/8" x 7 1/2" - 7' 3 1/8"	Right " "	
1	1 5/8" x 7 1/2" - 5' 7 1/8"	Left " "	
1	1 5/8" x 7 1/2" - 5' 11 1/2"	Right " "	
8	1" x 4" - 4' 5 1/8"	End Jamb	3/4" x 3 5/8" - 4' 5/8"
6	1" x 4" - 6' 8 3/8"	Head	3/4" x 3 5/8" - 6' 8 3/8"
2	1" x 2" - 5' 4 1/2"	" "	3/4" x 3 5/8" - 5' 4 1/2"
4	1" x 2" - 3'	" " splice	3/4" x 2" x 3'
15	1 1/2" x 1 1/2" - 4'	Posts (To be cut to fit on job)	
7	1" x 1 1/2" - 3' 11"	" " " " " " " "	
16	2' 8"	Stops	
16	5' 3"	" (Inside)	
8	3' 11"	"	



LAYOUT OF EQUIPMENT - PLAN L - 4

Scale 1" = 2'



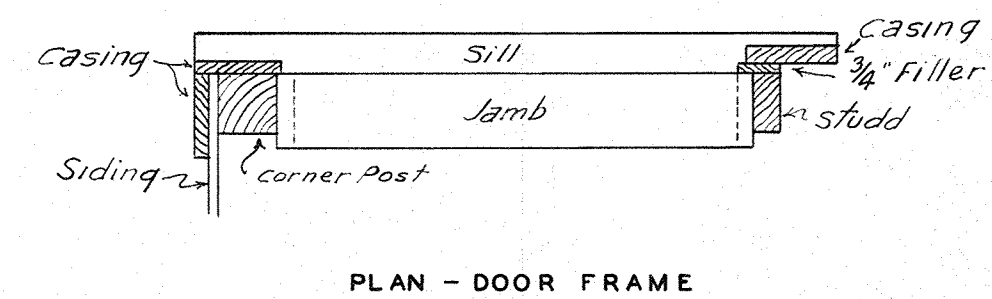
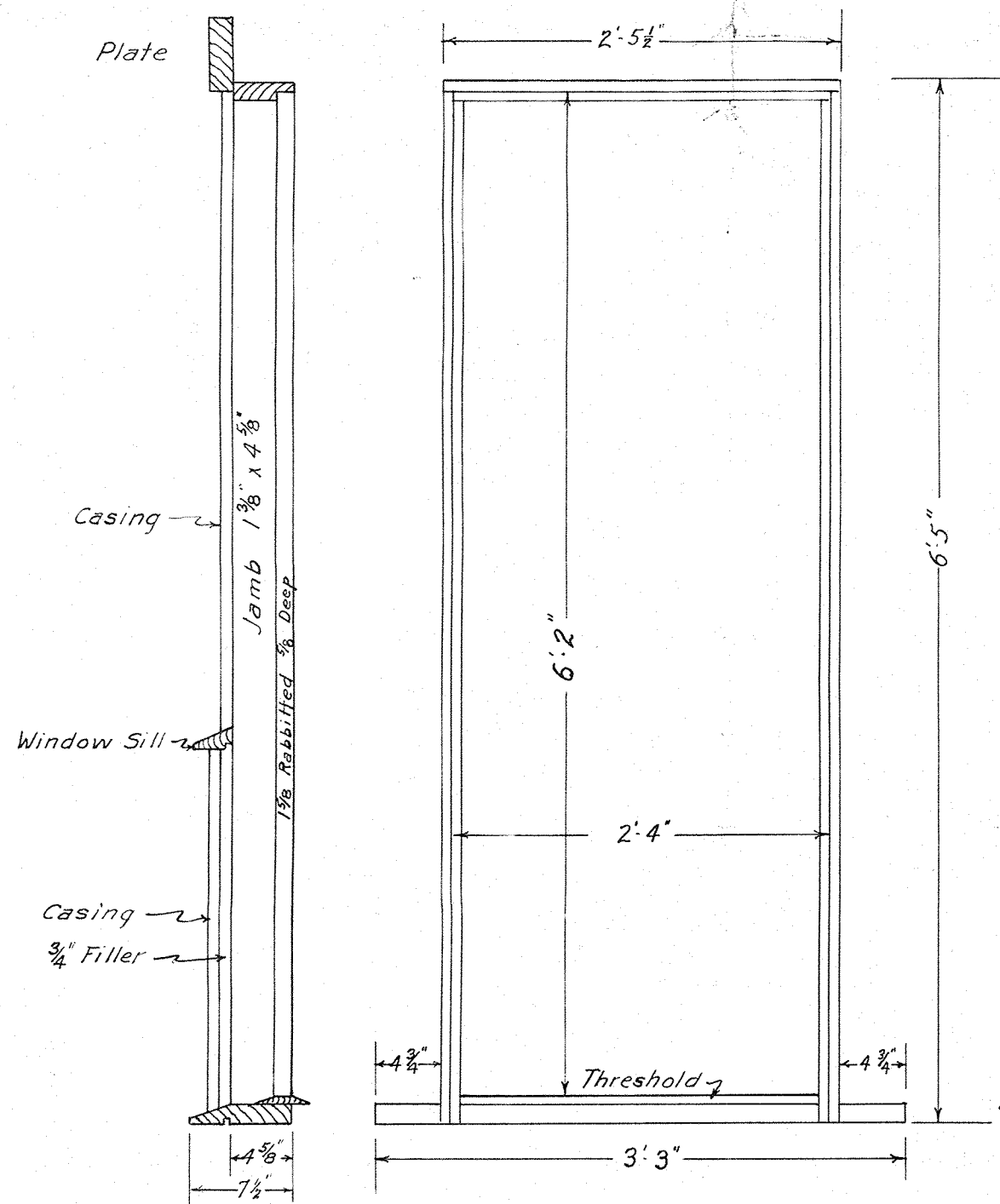
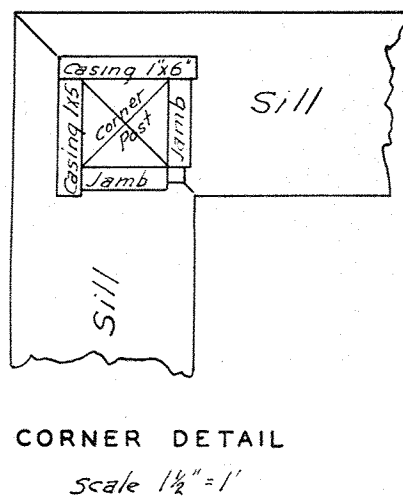
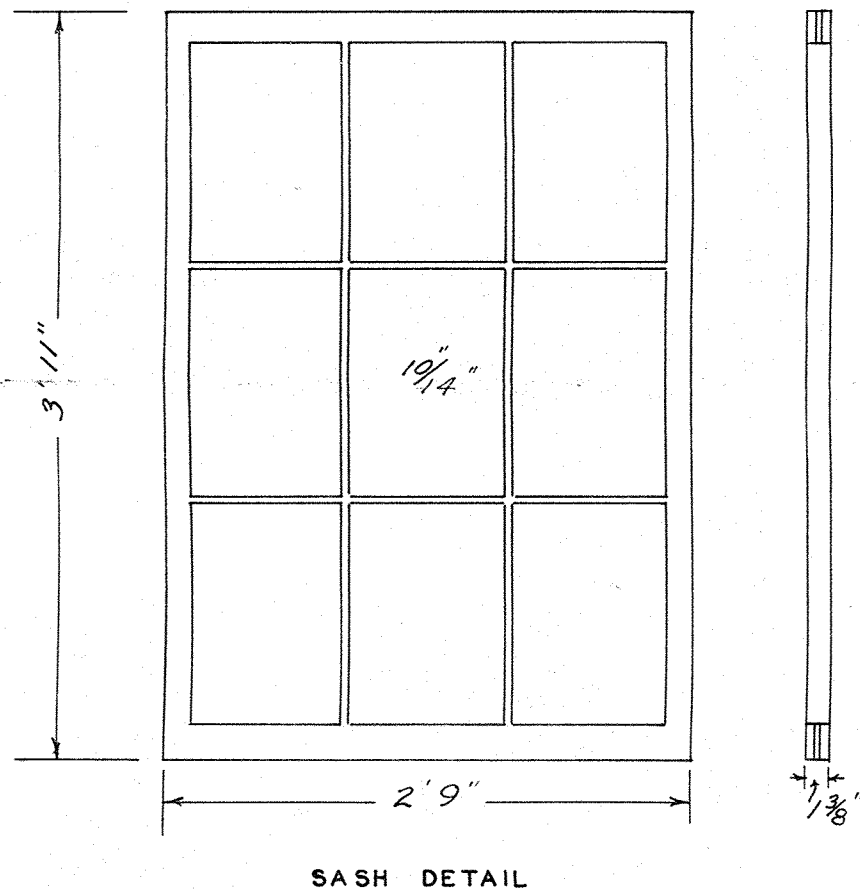
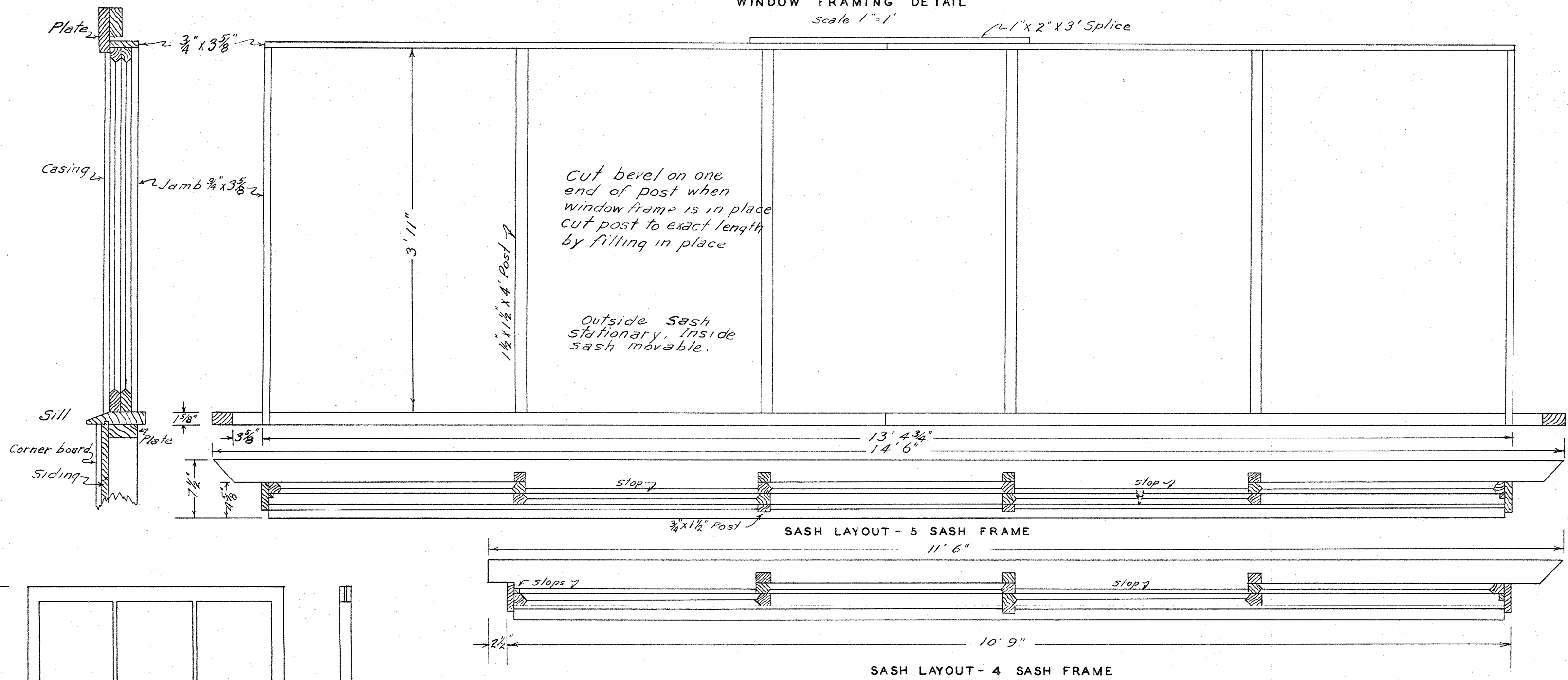
LOOKOUT TABLE
Scale 1" = 1'

- MATERIAL FOR TABLE**
- 5 Pc. 1' x 6" - 4' #2 Com P. Pine
 - 2 " 1' x 4" - 2' 2" " " "
 - 2 " 1' x 4" - 3' 2 1/4" " " "
 - 2 " 1' x 4" - 2' 5" (Legs) " " "
 - 1 Pr. 4" T Hinges
 - 2 3/8" x 2 1/2" Carriage Bolts with washers

- MATERIAL FOR SHELVES**
- 1 Pc. 1' x 12" - 3' #2 Com P. Pine
 - 1 " 1' x 12" - 2' 10 1/4" " " "
 - 1 " 1' x 12" - 4' " " "
 - 1 " 1' x 12" - 3' 10 1/4" " " "
 - 1 " 1' x 12" - 6' " " "
 - 1 " 1' x 12" - 5' 10 1/4" " " "
 - 6 " 1' x 12" - 2' 2" " " "
 - 6 " 1/2" x 1" - 11 1/2" " " "

WINDOW FRAMING DETAIL

Scale 1"=1'



MATERIAL LIST FOR DOOR FRAME

1	Pc.	3' 3"	Door Sill
2	"	1 3/8" x 4 5/8" x 6' 4 1/2"	Side Jamb
1	"	1 3/8" x 4 5/8" x 2' 5 1/2"	Head "
1	"	2' 6"	Threshold

Top of door sill set 3/4" above sub-floor level so that second floor will be level.