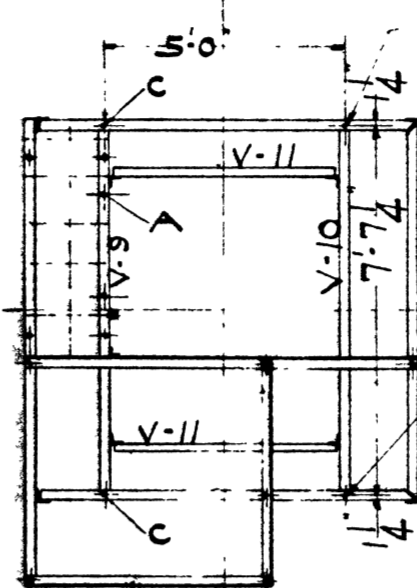


SECTION B-B

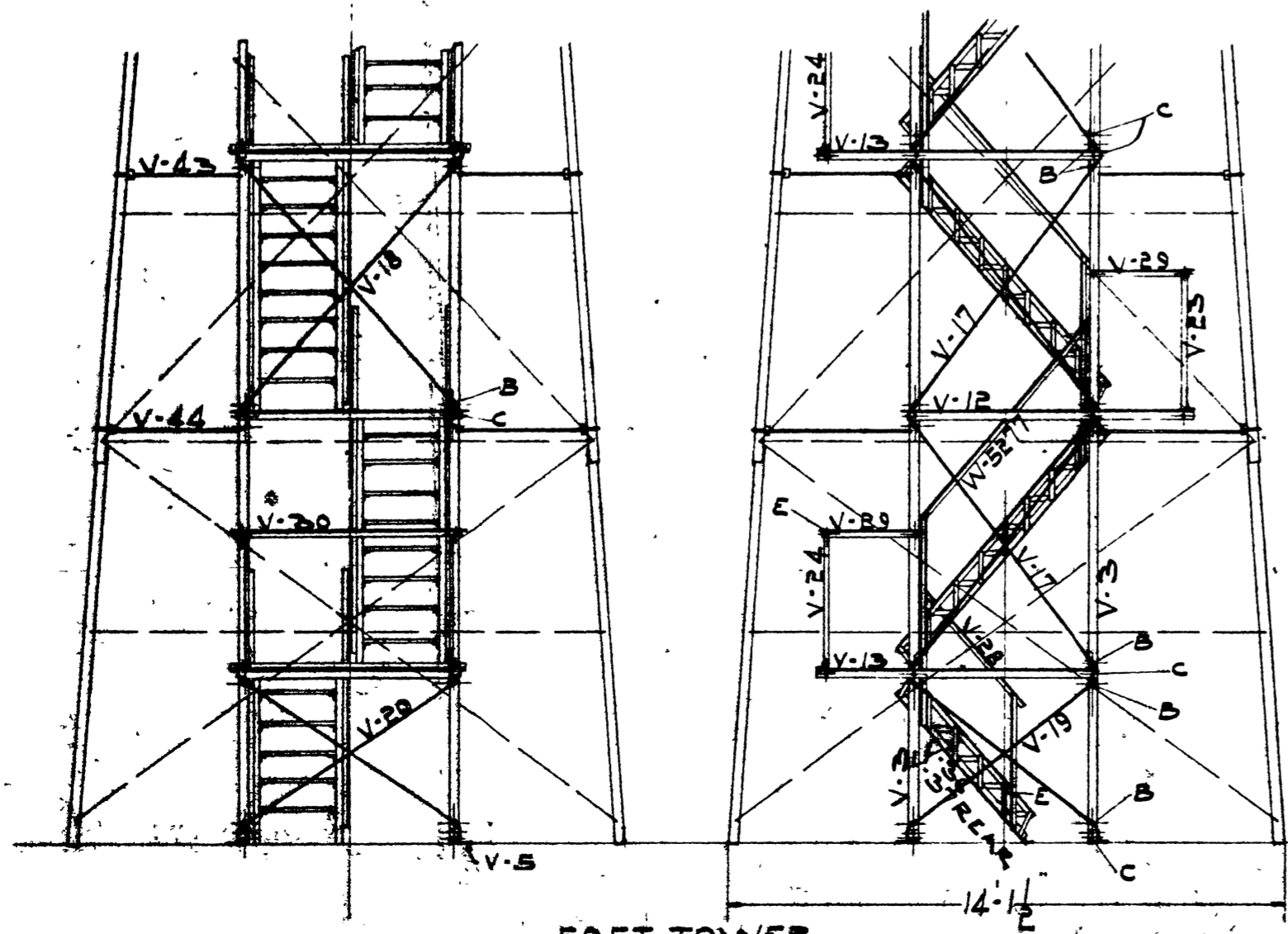


SECTION A-A

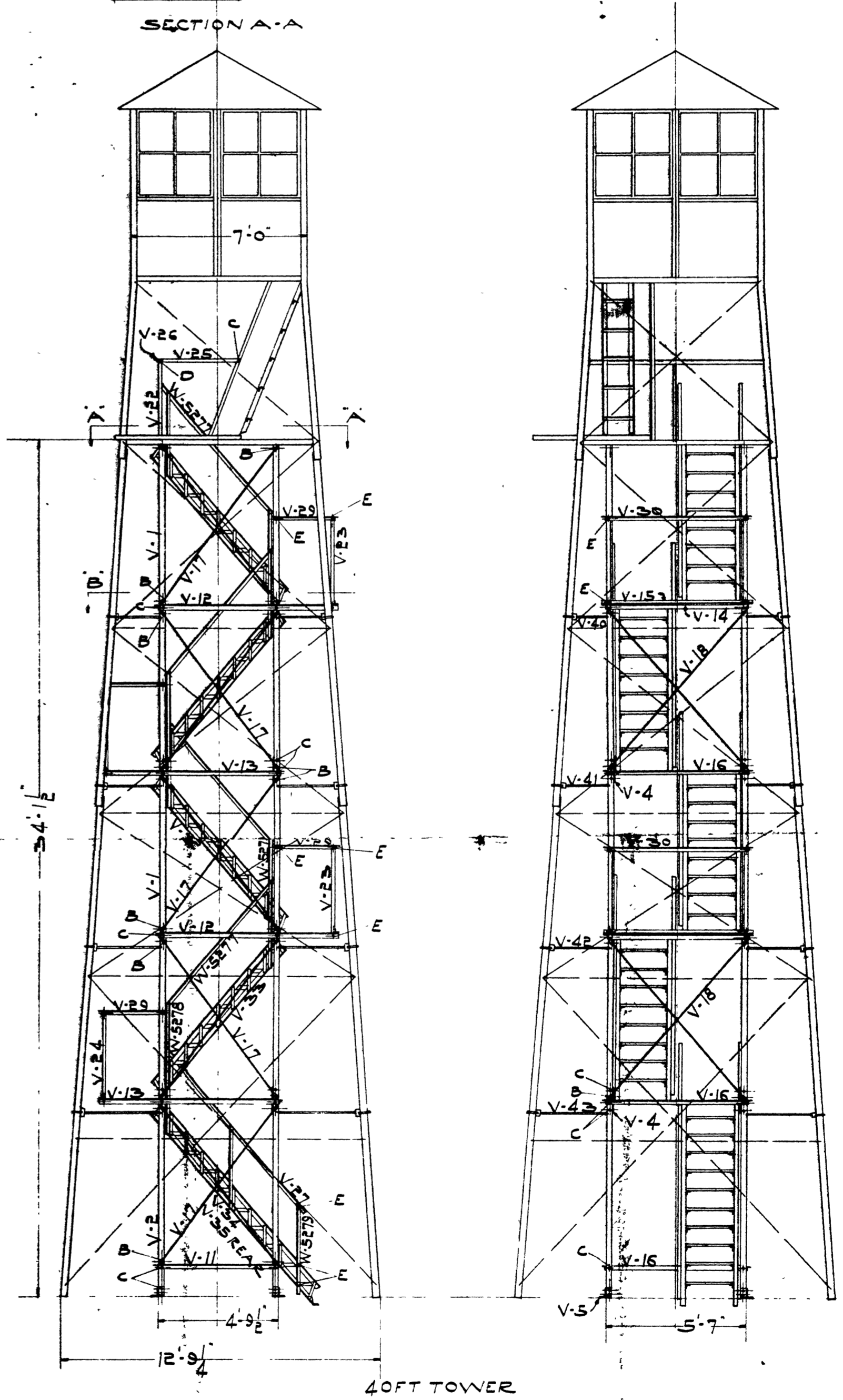
9 HOLES IN TOWER GIRTS TO BE DRILLED IN FIELD.

LIST OF BOLTS

NO. REQ'D.	50'	40'	SIZE	LOC.
26	18	1/2	SQ. NUT.	A
84	60	1/2		B
99	93	1		C
13	9	1		D
150	112	2		E
28	20	2 1/2	FOR PLATFORMS	
212	168	1 1/2	CARRIAGE BOLTS FOR STEPS.	
20	16	W-3490 C.I.	WASHER FOR TIE RODS.	
84	60	1 1/2 x 1/8	WASHERS FOR WIRE BRACES.	



50 FT. TOWER



40 FT. TOWER