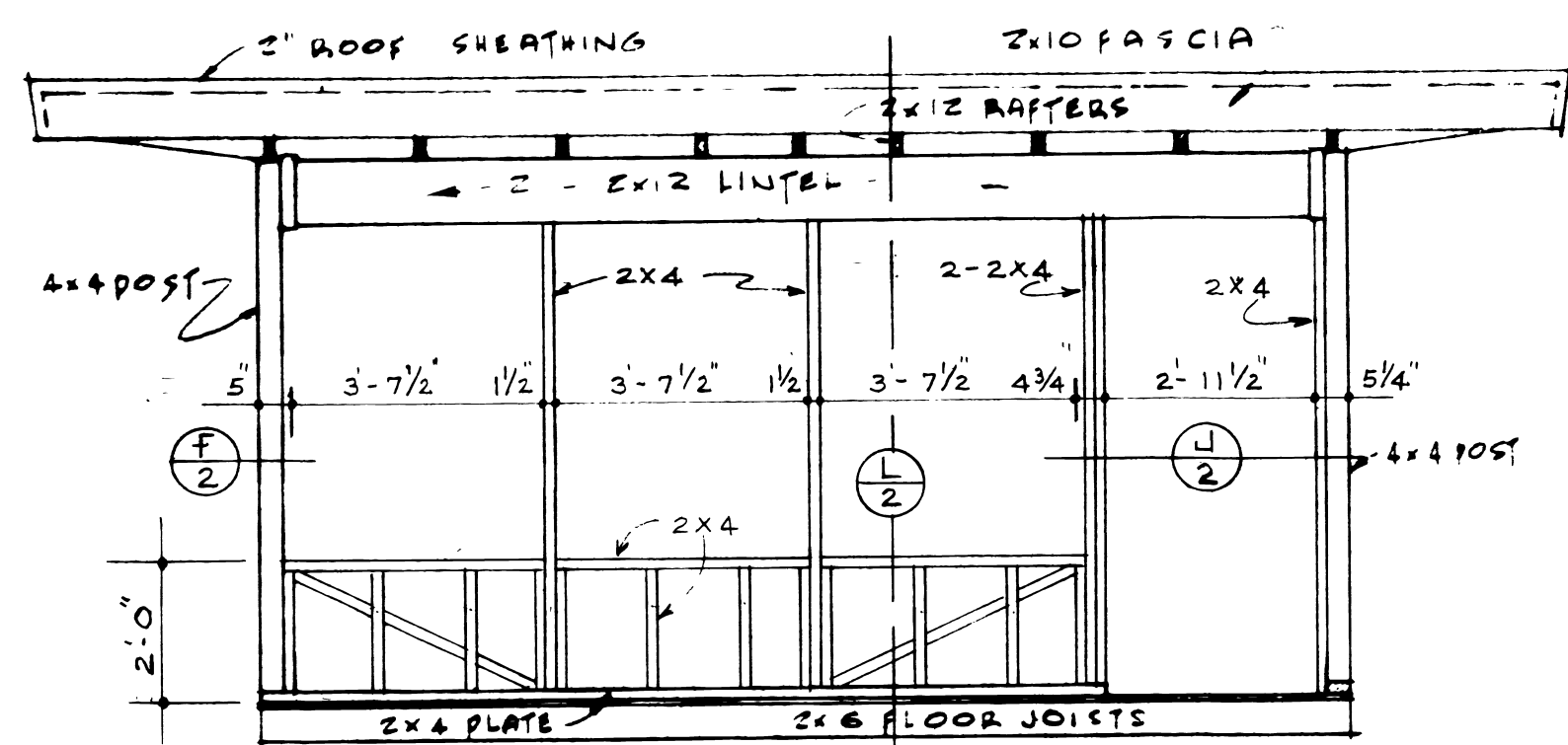
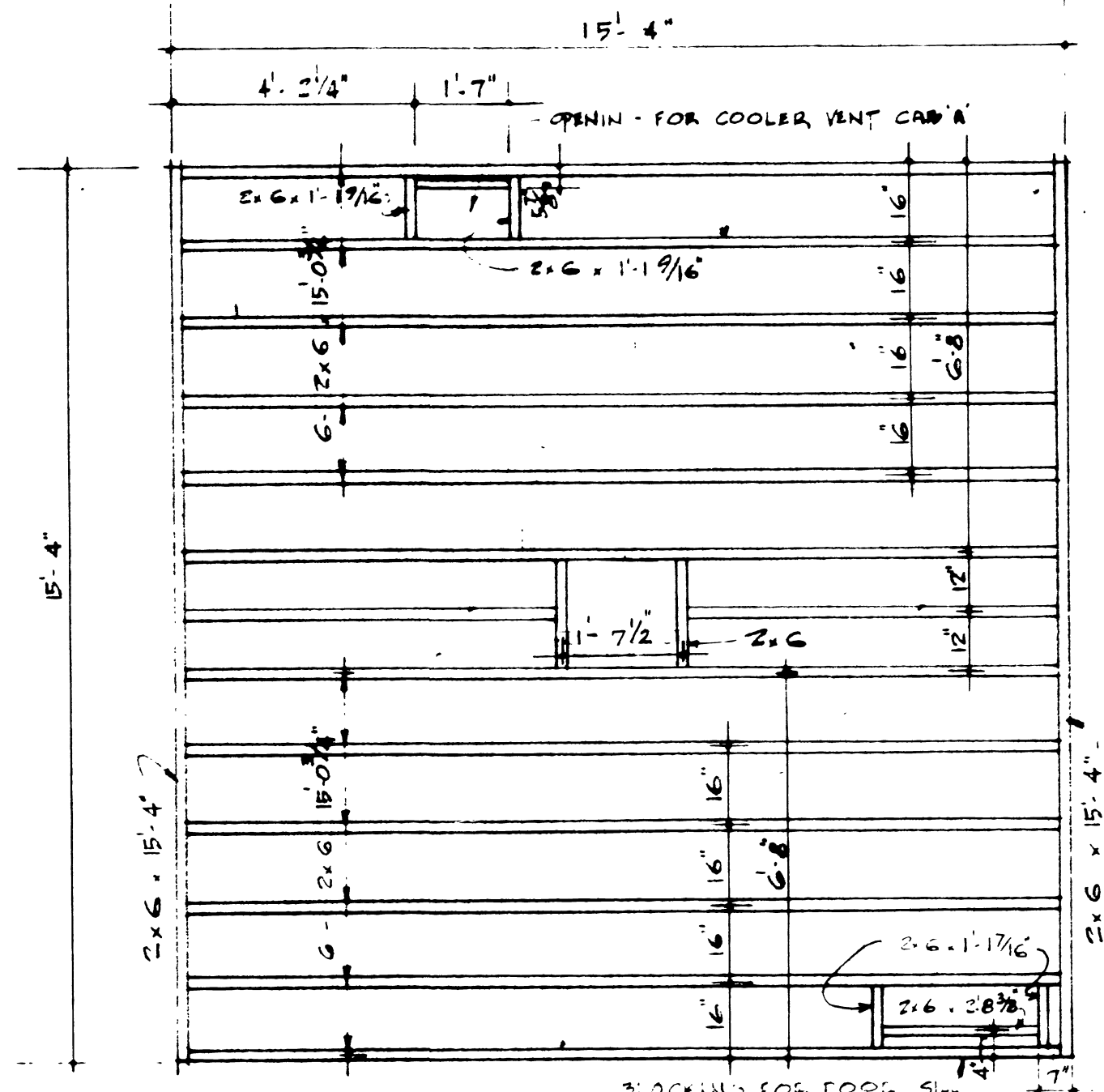


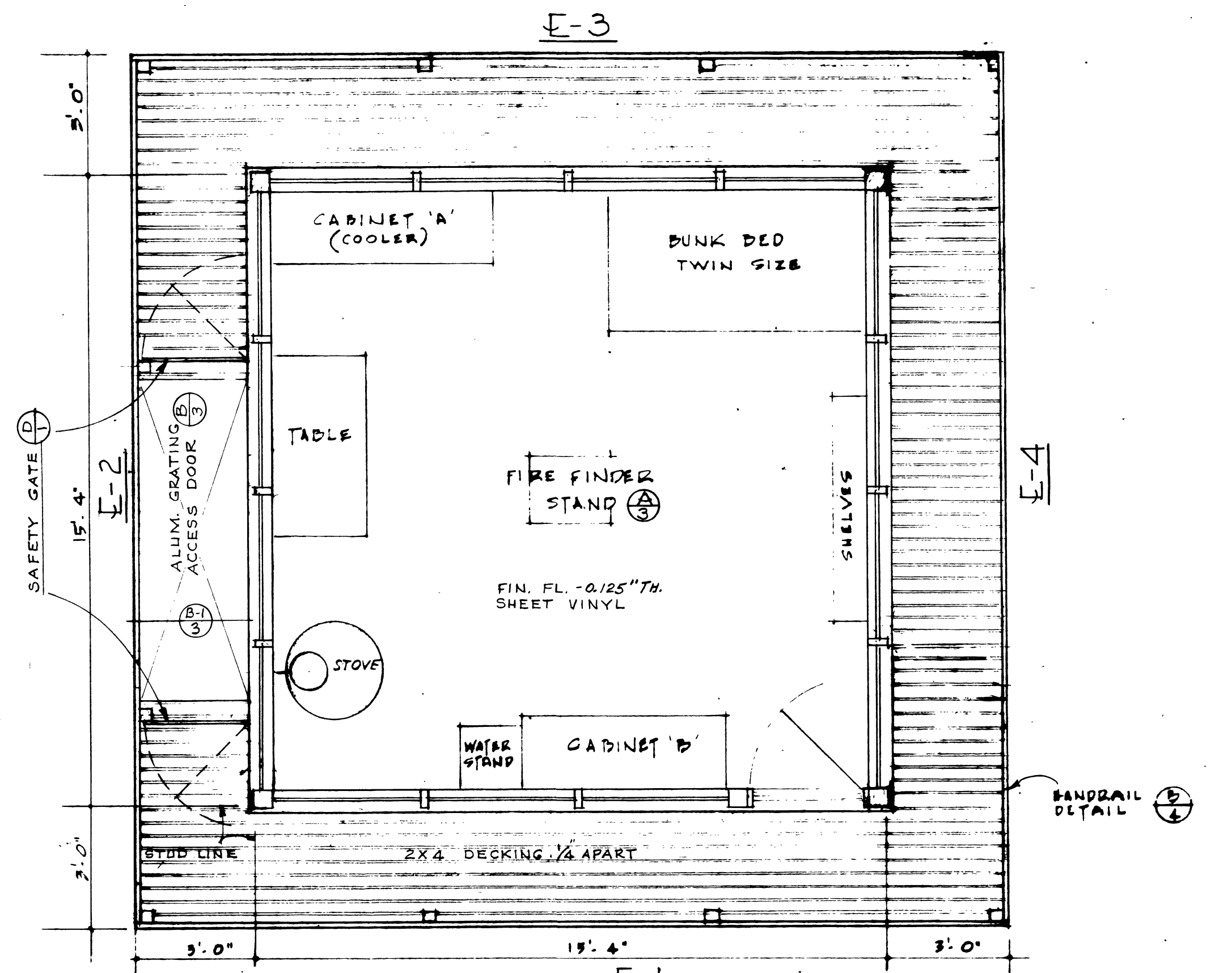
ROUGH FRAMING SIDE & REAR
SCALE: E-2 E-3 E-4 3/8" = 1'-0"



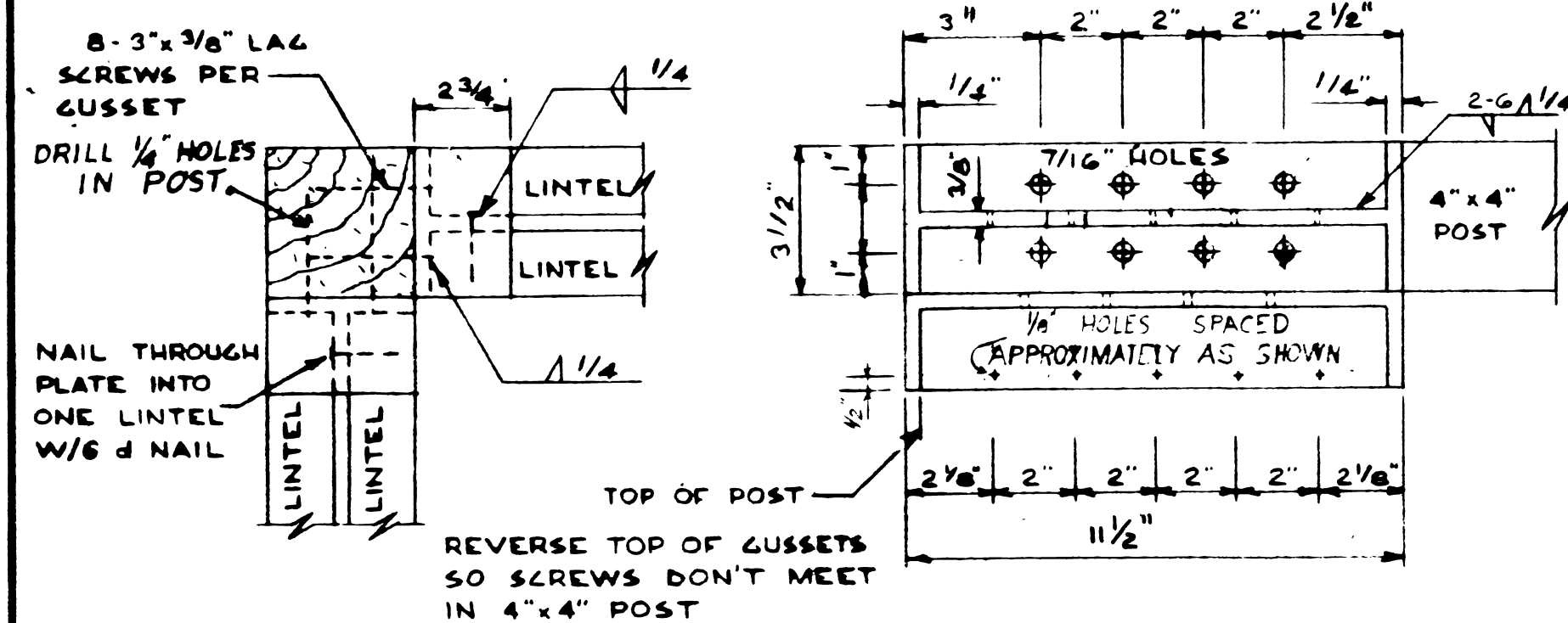
ROUGH FRAMING FRONT
E-1



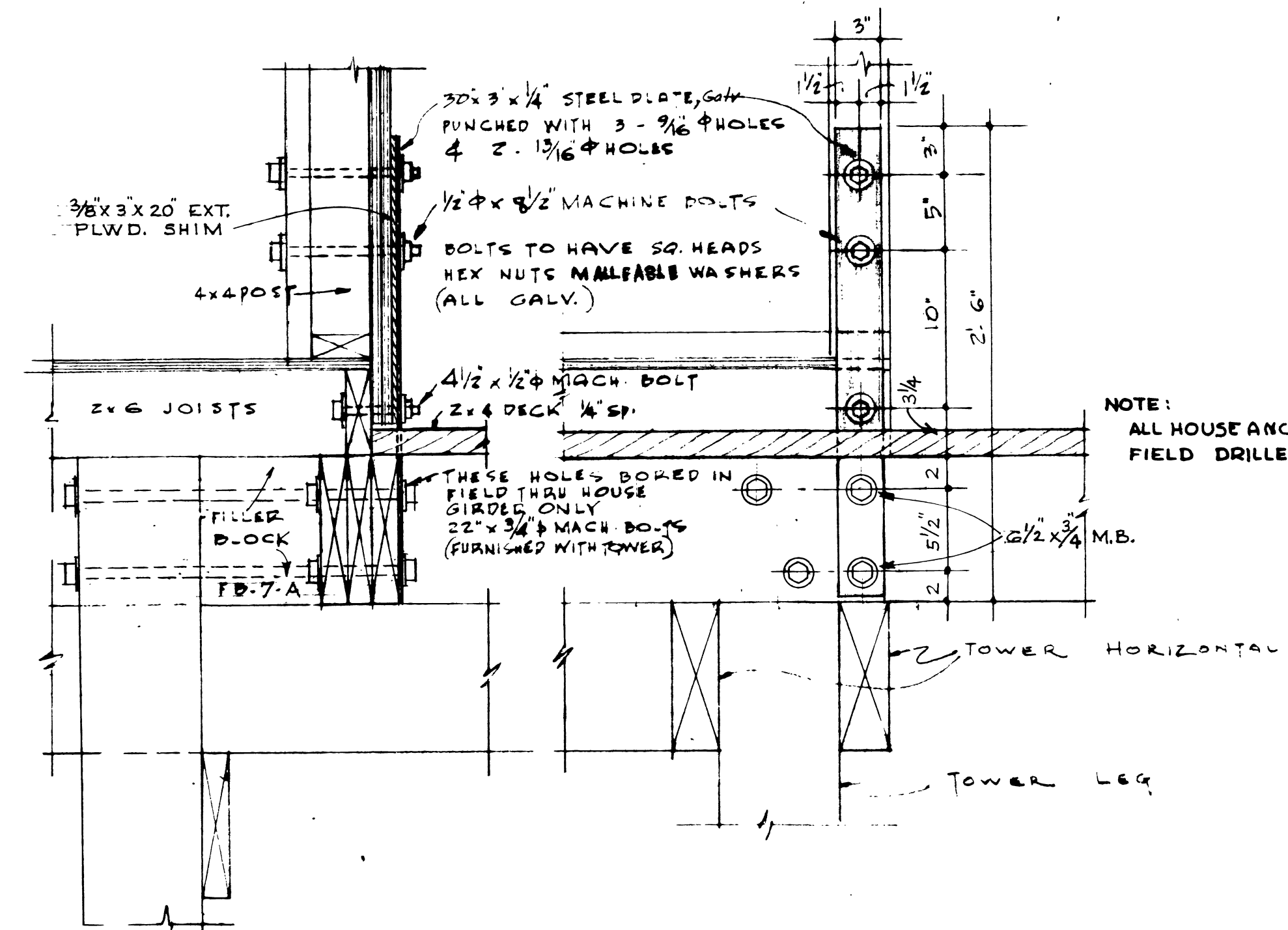
FLOOR JOIST FRAMING
SCALE: 3/8" = 1'-0"



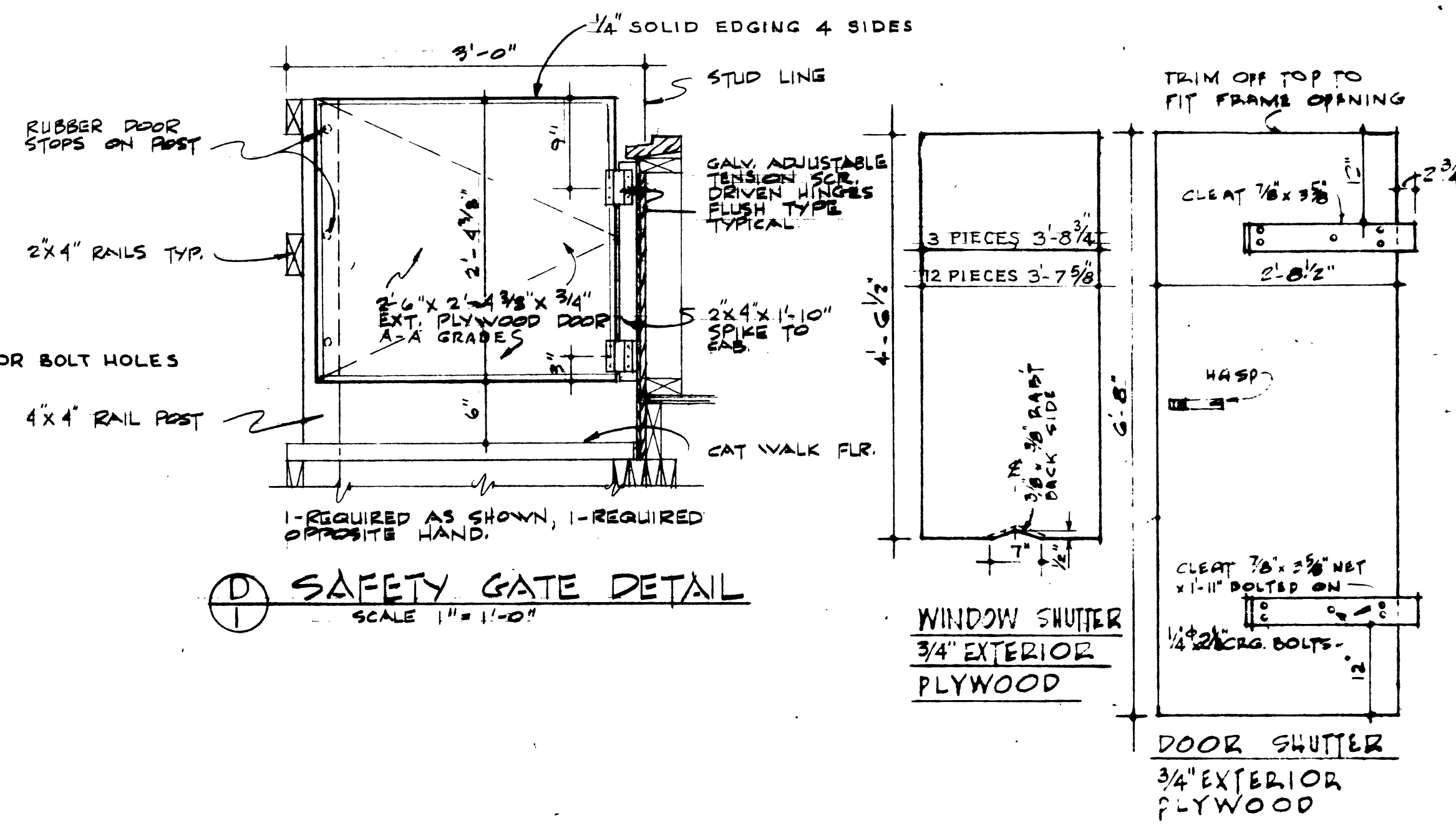
FLOOR PLAN E-1
SCALE: SEE SHEETS 3 & 4 FOR FURNITURE DETAILS. 3/8" = 1'-0"



GUSSET DETAILS
SCALE: 3\"/>



SECTION A SECTION B
ANCHORAGE DETAILS
SCALE: 1 1/2\"/>

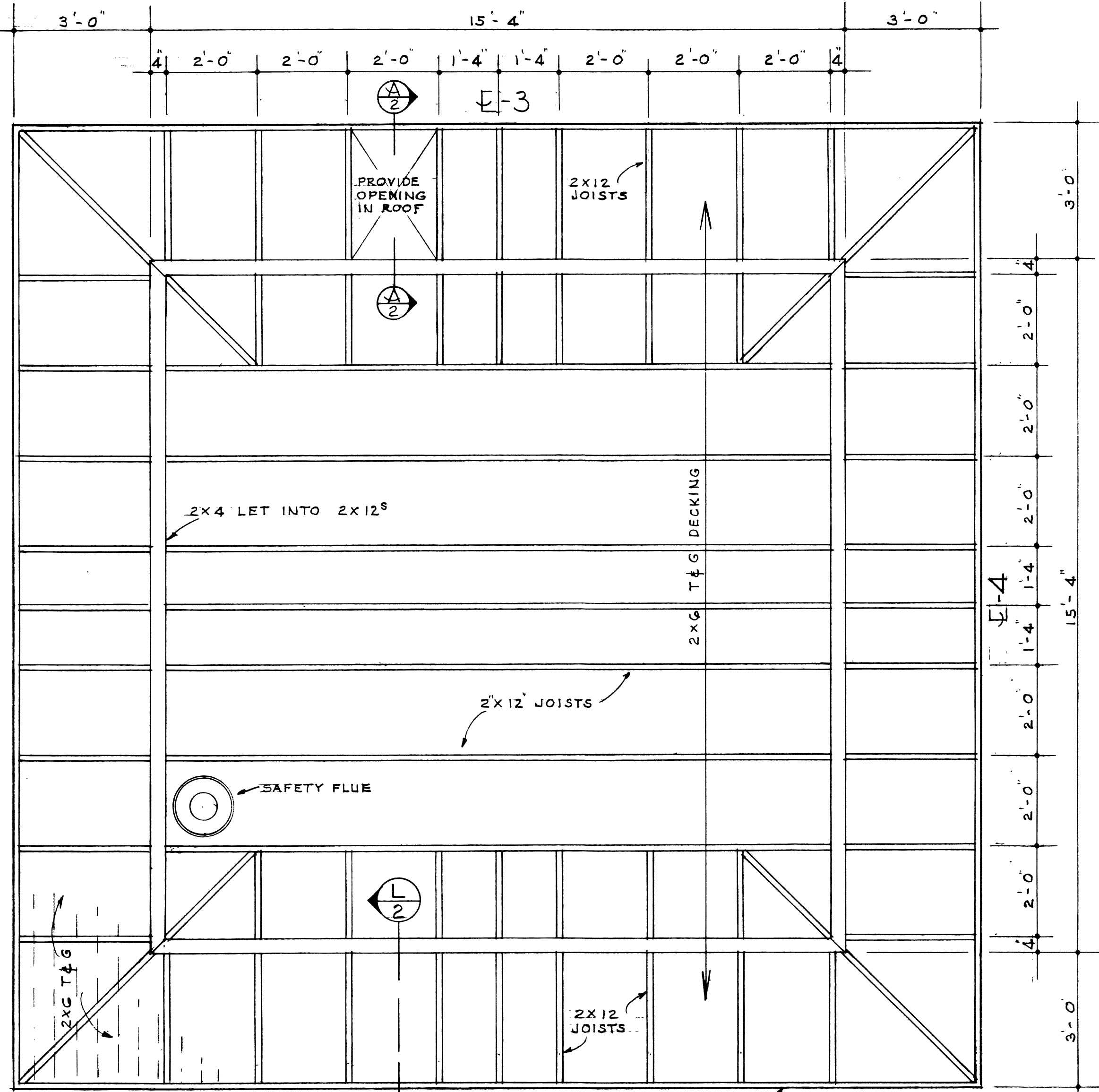


SAFETY GATE DETAIL
SCALE: 1\"/>

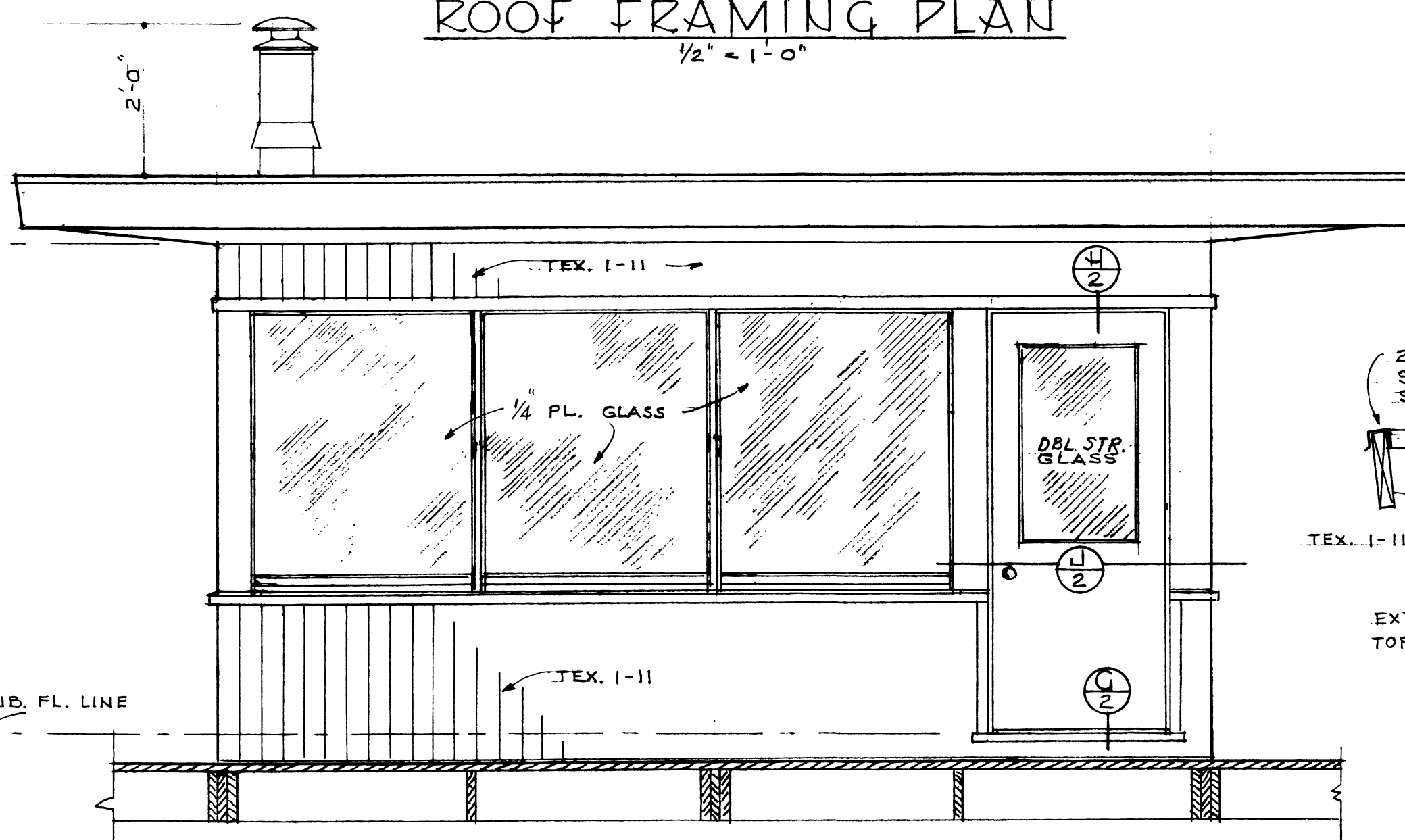
REV. 3-9-64 GUSSETS - FRAMING ANCHORS - ROOF FRAMING, FRONT SIDE
REVISED - 1-16-63 ADDED GUSSET DETAIL & FRAMING ANCHOR NOTE

U. S. DEPARTMENT OF AGRICULTURE FOREST SERVICE REGION SIX		LOOKOUT HOUSE	
ARCHITECT: CHECKED: APPROVED:	DRAWN BY: P.C. JAMES DATE: 3-1-62	PLANS & SECTIONS	
LT 64301-A		B-4301-A	

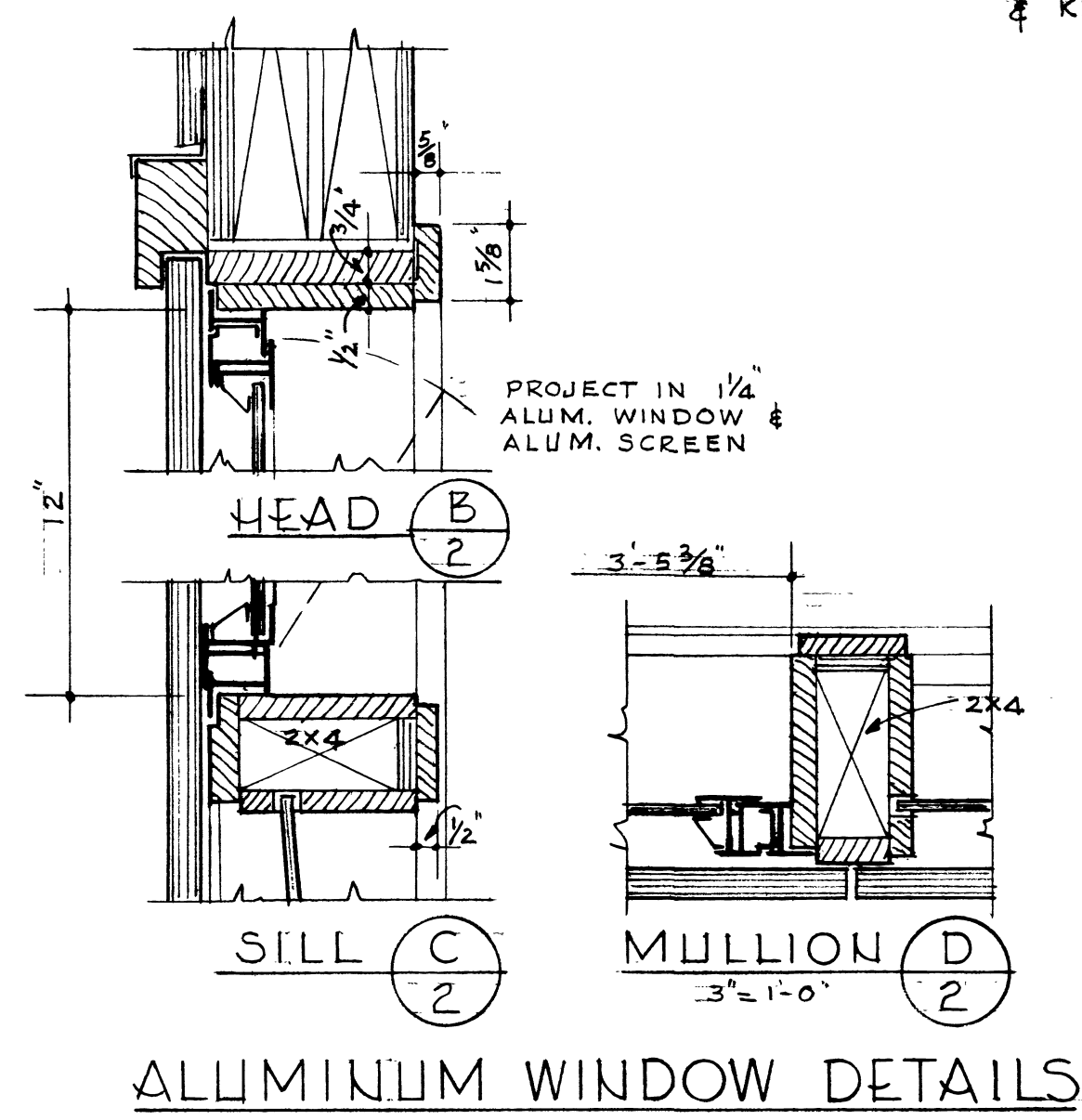
S 3-11-2003



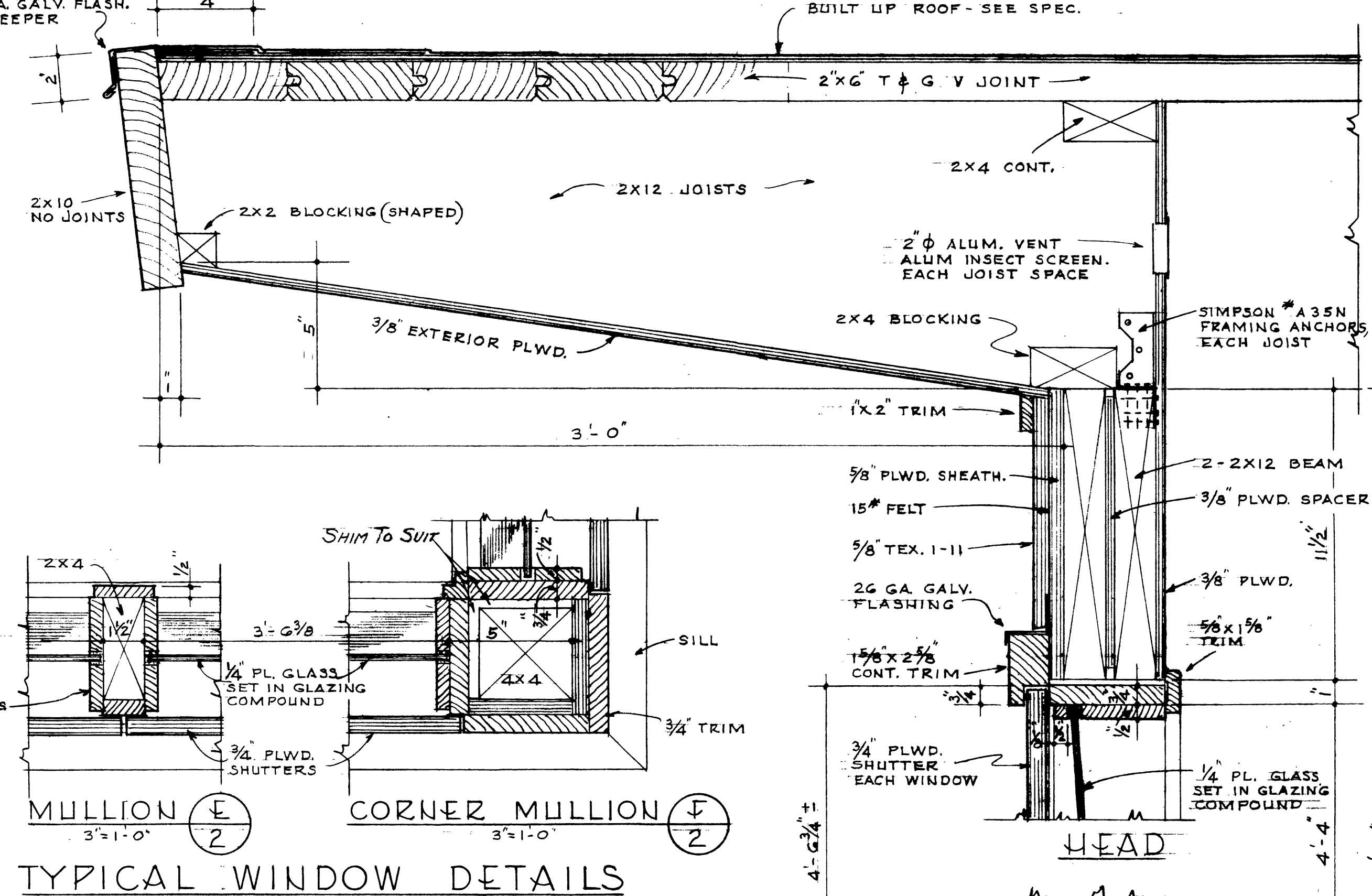
ROOF FRAMING PLAN
1/2" = 1'-0"



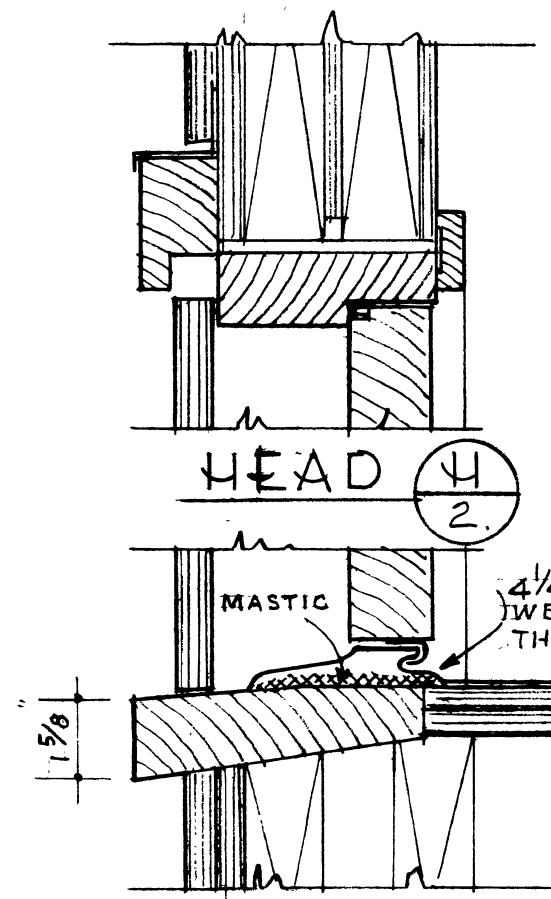
ELEVATION E-1
1/2" = 1'-0"



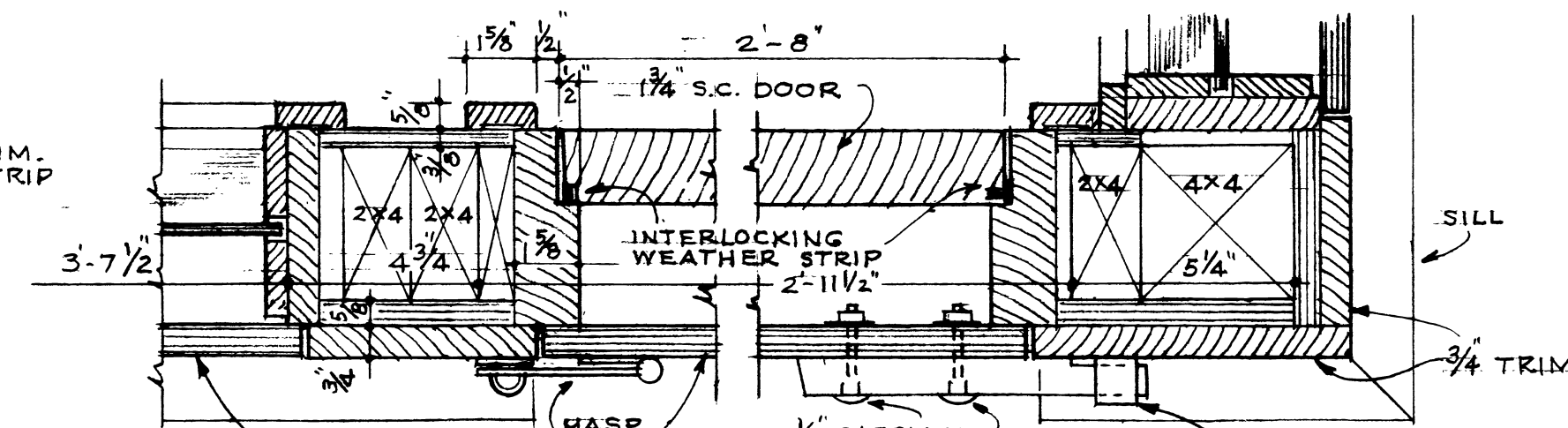
ALUMINIUM WINDOW DETAILS



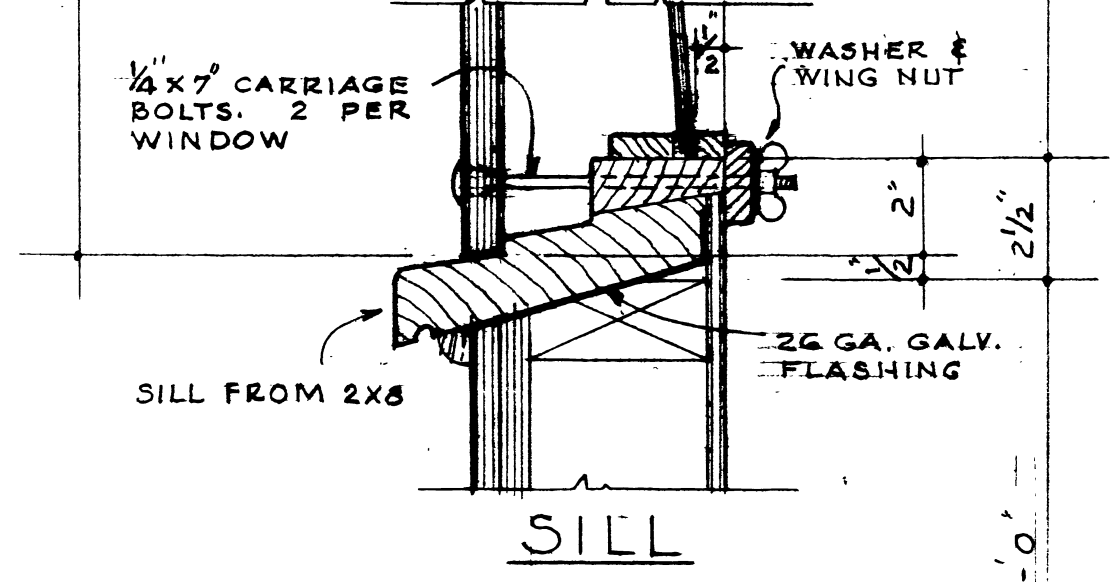
TYPICAL WINDOW DETAILS



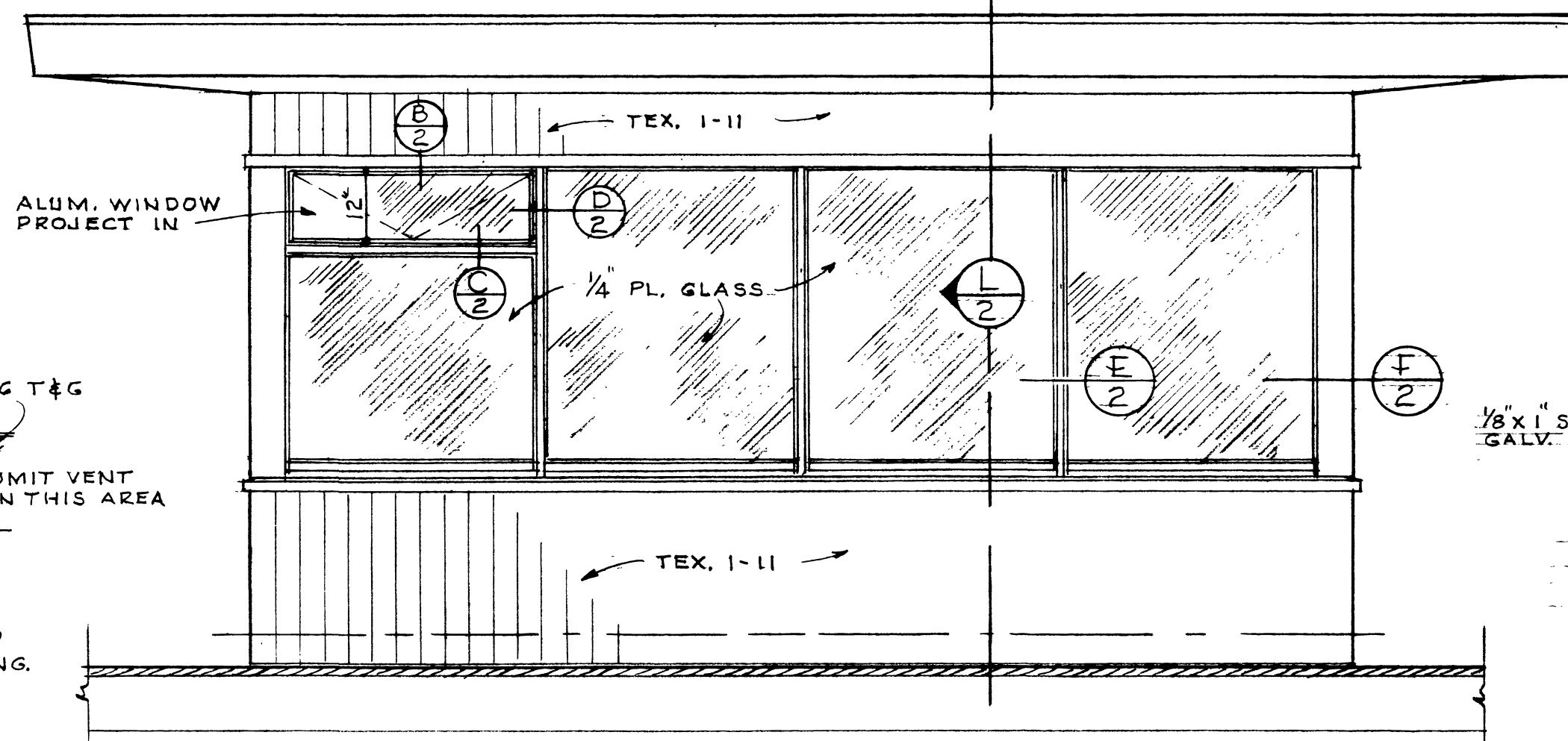
DOOR SILL
3/4" = 1'-0"



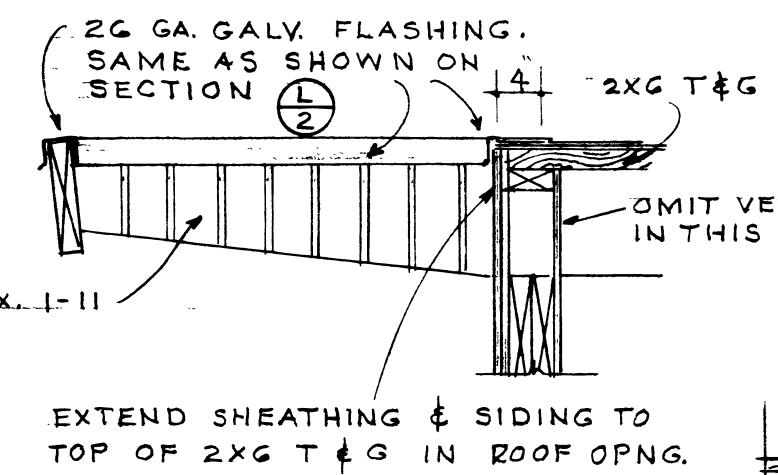
DOOR JAMB
3/4" = 1'-0"



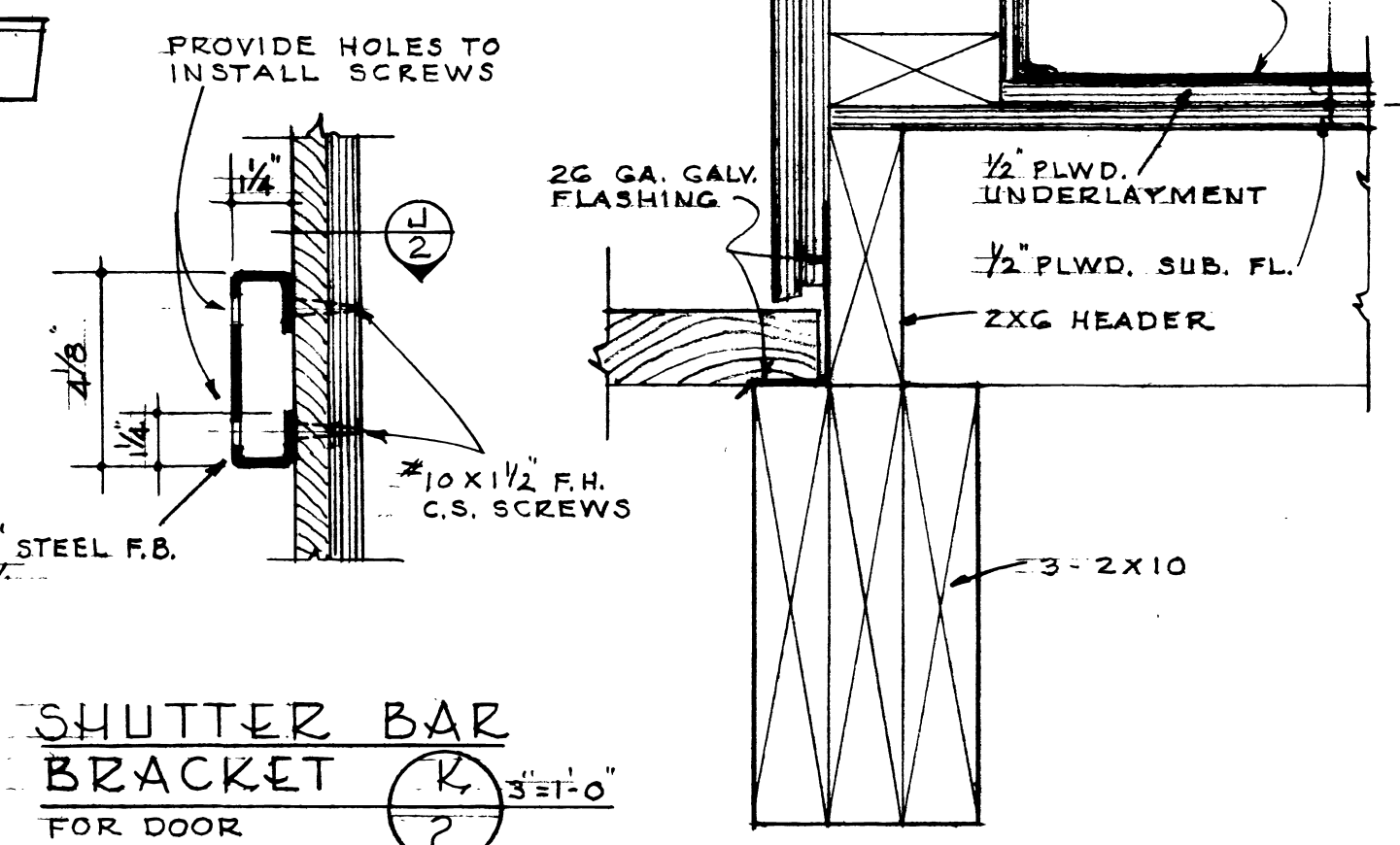
SILL



ELEVATION E-2 E-3 E-4



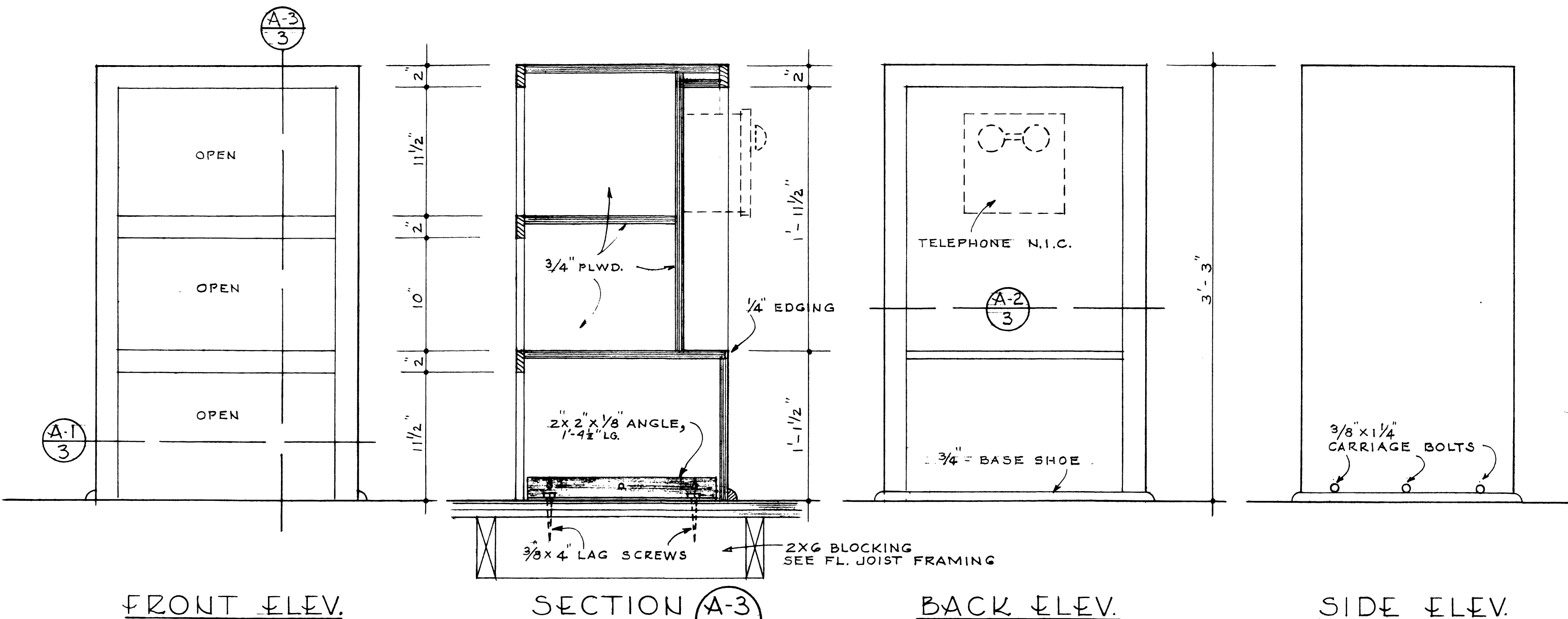
SECTION A
3/4" = 1'-0"



SECTION L
3/4" = 1'-0"

R. O. APPROVAL:		U. S. DEPARTMENT OF AGRICULTURE FOREST SERVICE		LOOKOUT HOUSE	
APPROVED:		TITLE		ROOF FRAMING PLAN	
FOREST SUPERVISOR		THE PACIFIC NORTHWEST REGION		EXTERIOR ELEVATIONS	
R. O. STAFF	E	FOREST ENGINEER	DATE: 2-17-71	WALL SECTION	
RECOMMENDATION	R	RECREATION STAFF	DATE: 2-17-71	DOOR & WINDOW FRAME DETAILS	
	O	DISTRICT RANGER	DATE:	SHT 2 of 4	

53-11-2003

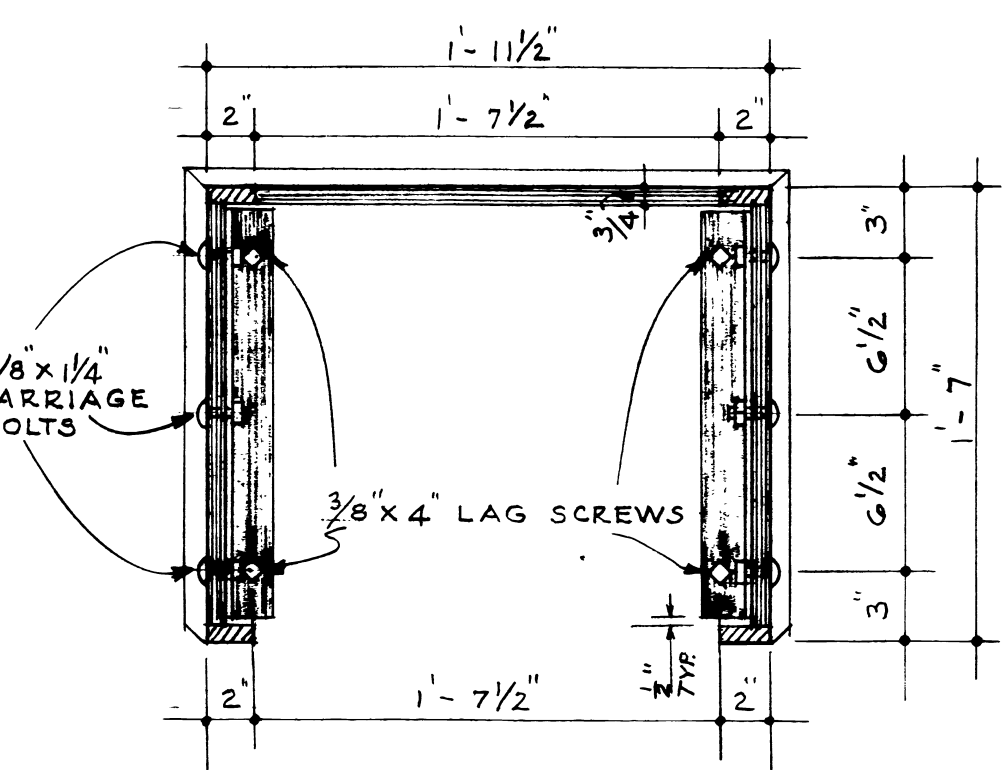


FRONT ELEV.

SECTION A-3

BACK ELEV.

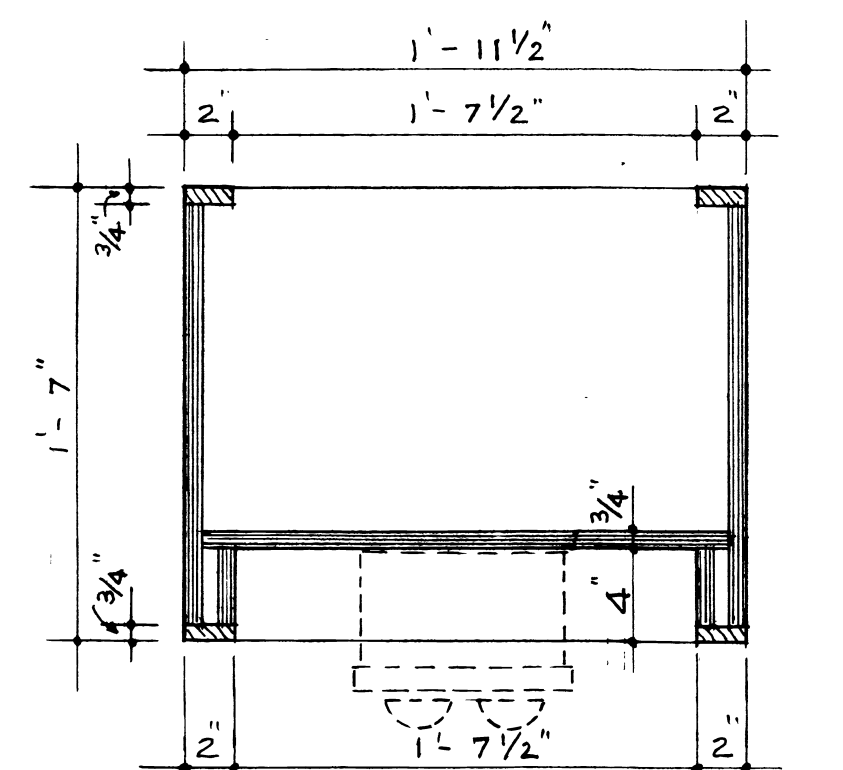
SIDE ELEV.



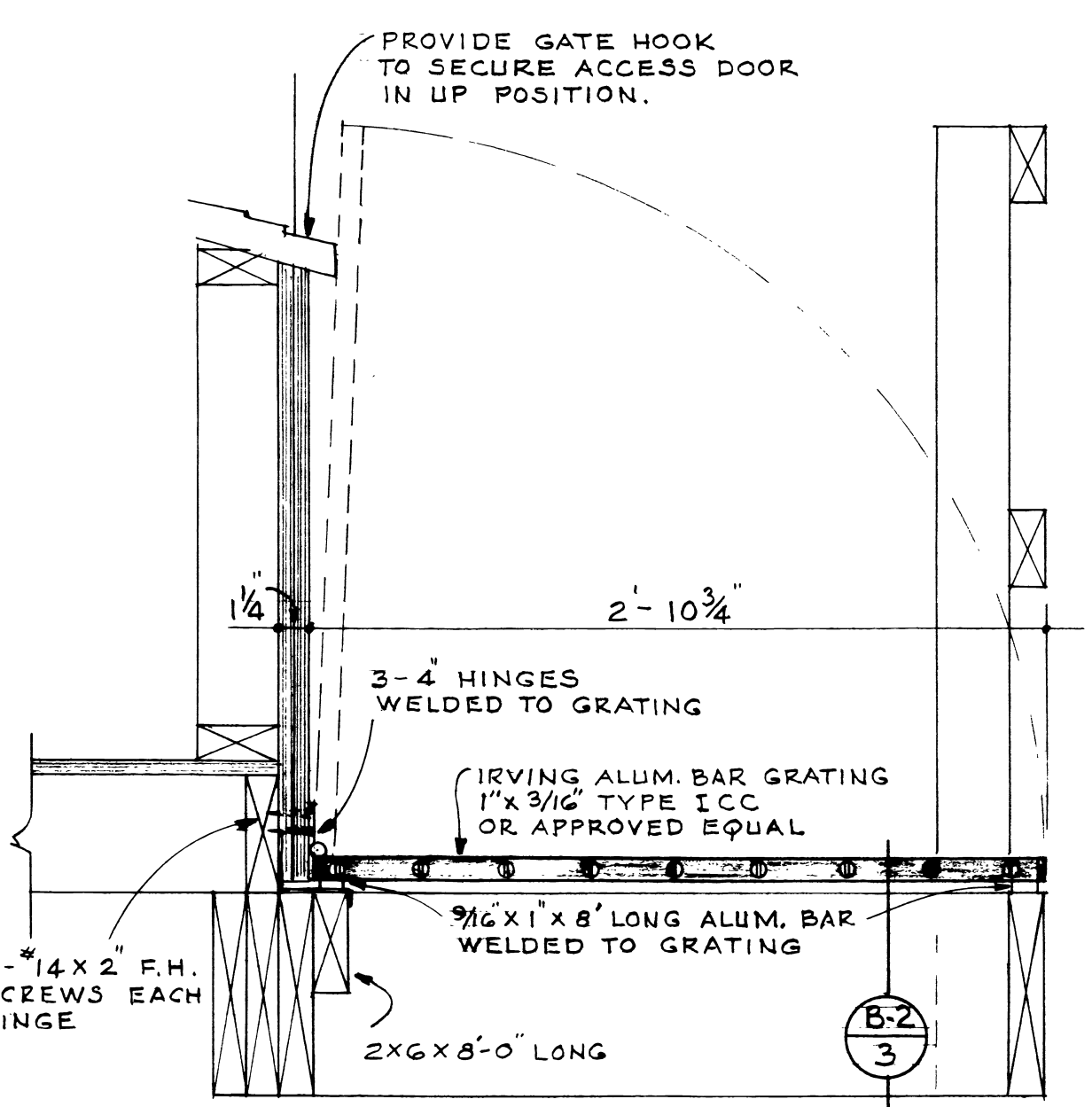
PLAN SECTION A-1

NOTE:
 ALL PLWD. TO BE D.F.
 A.B. GRADE, EXT., GRR 1
 ALL JOINTS TO BE GLUED
 & NAILED.

FIRE FINDER STAND

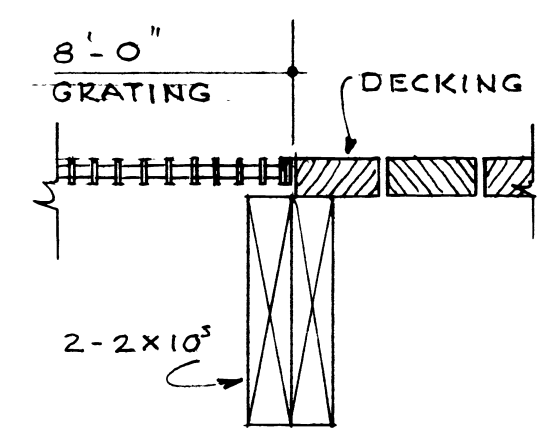


PLAN SECTION A-2

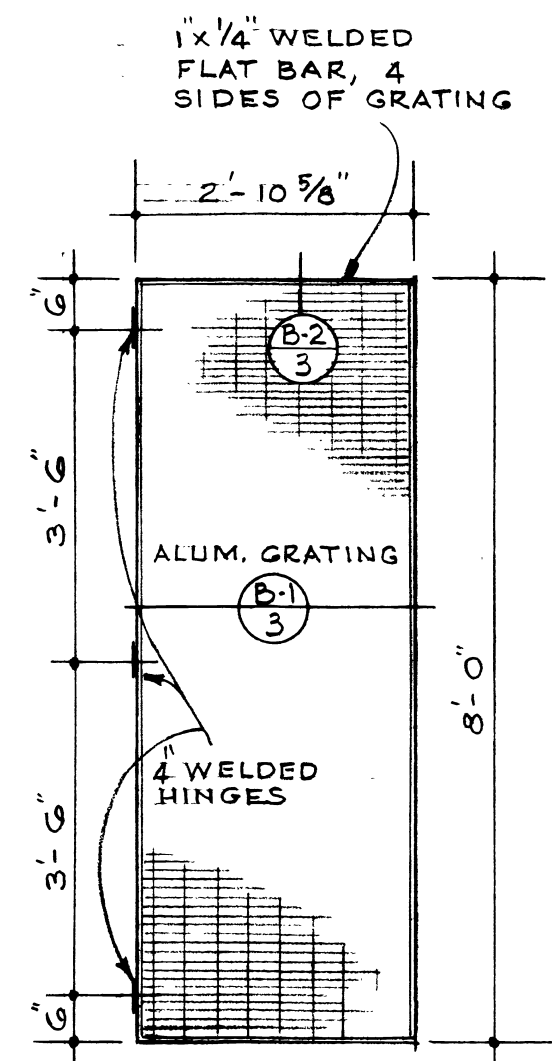


SECTION B-1

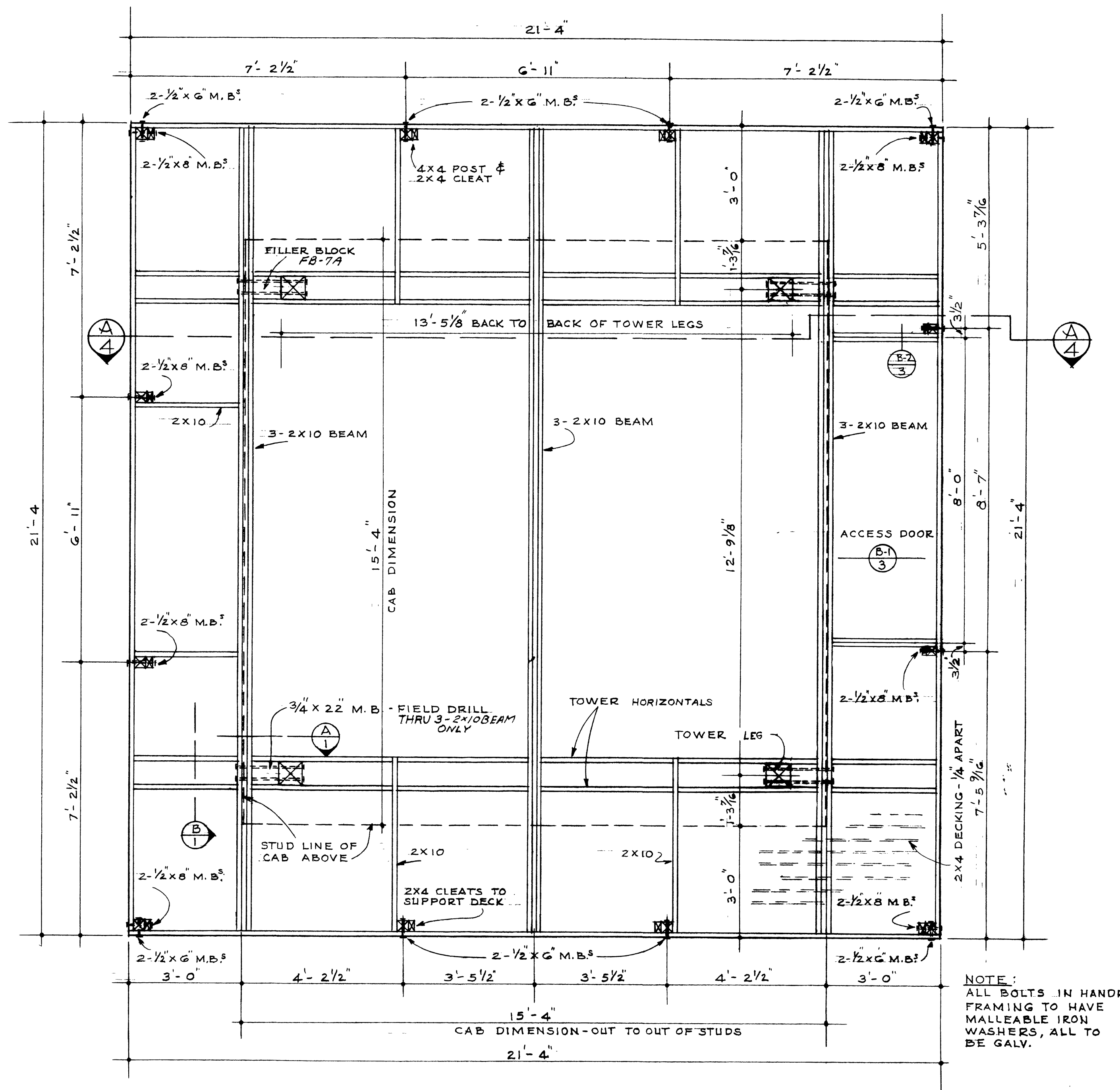
ACCESS DOOR DETAIL



SECTION B-2



ELEV.

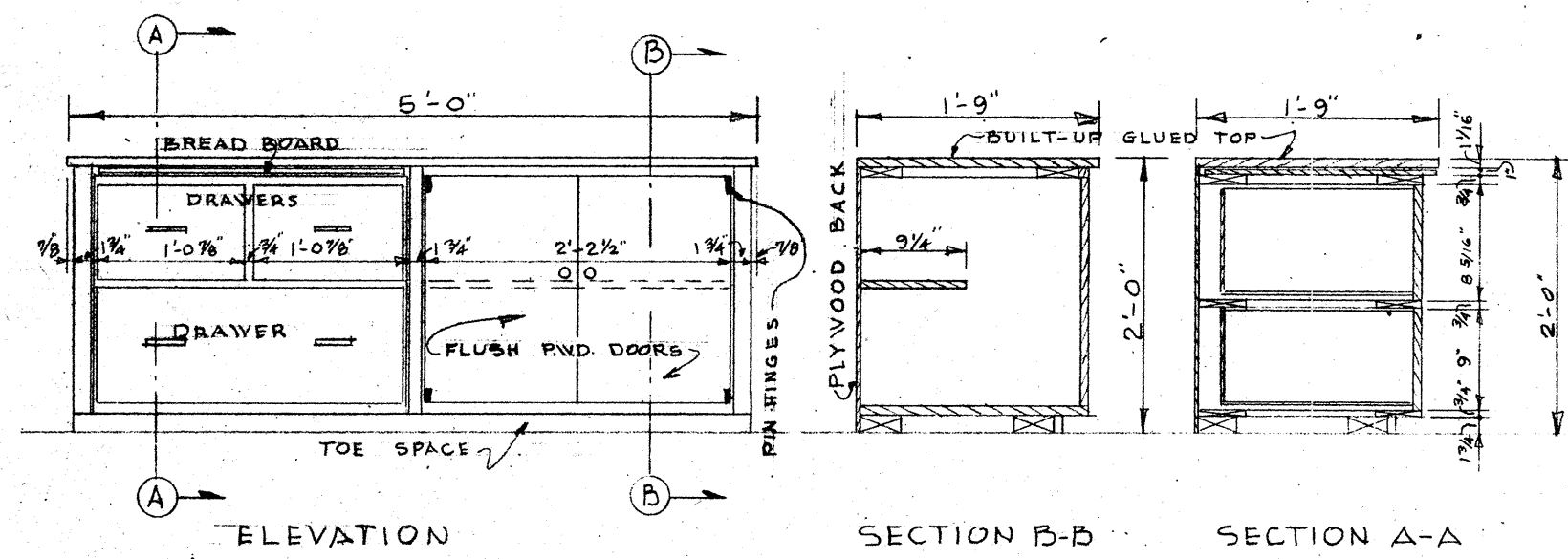


CATWALK UNDER CAB FRAMING

NOTE:
 ALL BOLTS IN HANDRAIL FRAMING TO HAVE MALLEABLE IRON WASHERS, ALL TO BE GALV.

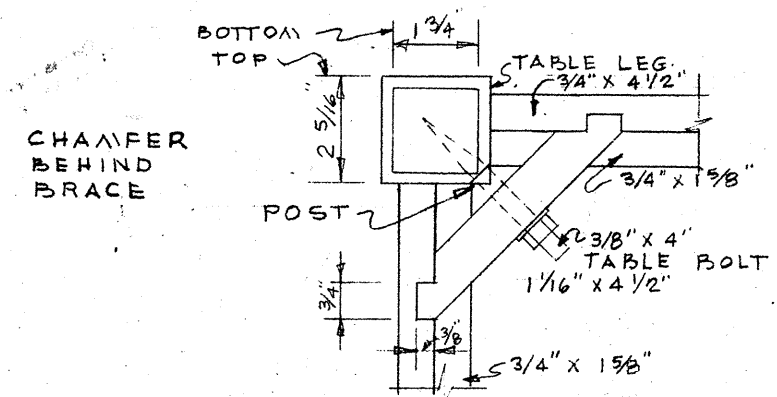
R. O. APPROVAL:		U. S. DEPARTMENT OF AGRICULTURE FOREST SERVICE		LOOKOUT HOUSE	
APPROVED:		TITLE		SHT 3	
FOREST SUPERVISOR		THE PACIFIC NORTHWEST REGION		of 4	
R. O. STAFF	E	FOREST ENGINEER	DRAWN	DATE:	CATWALK UNDER CAB FRAMING FIRE FINDER STAND ACCESS DOOR DETAIL
RECOMMENDATION	R	RECREATION STAFF	CHECKED	DATE:	
	O	DISTRICT RANGER	SUBMITTED	DATE:	

S 3-11-2003

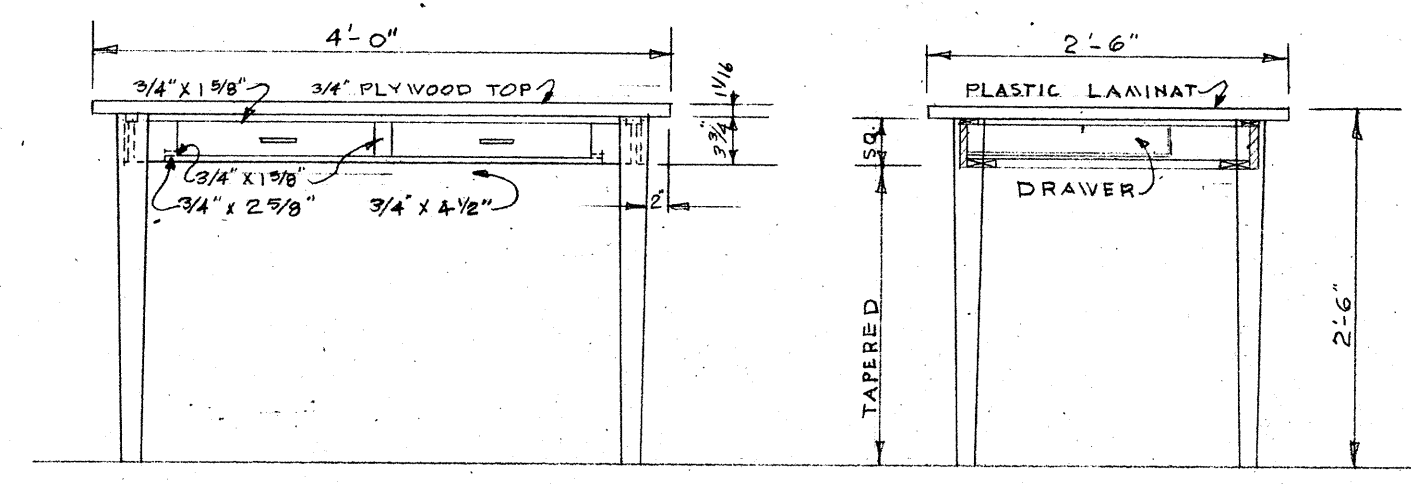


KITCHEN CABINET B
SCALE 3/4" = 1'-0"

NOTE: ONE CABINET LIKE THIS
ALL DOORS & DRAWER PULLS U.S. 10 SOLID BRONZE

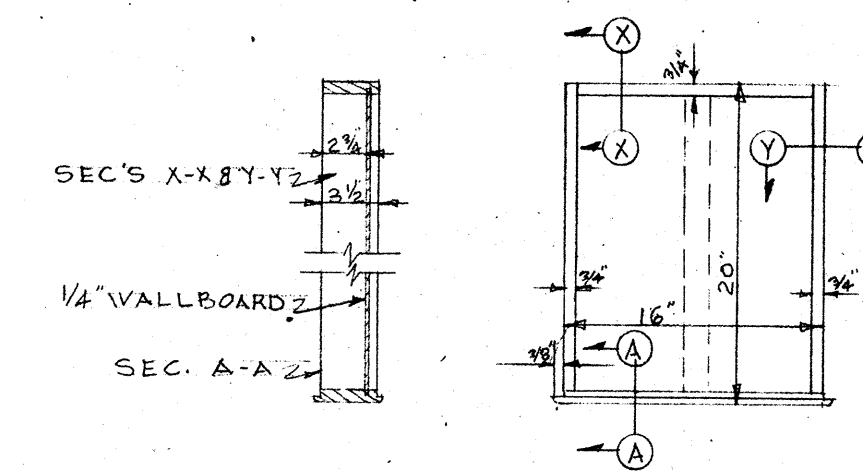


DETAIL OF TABLE LEG CONNECTION
LOOKING UP FROM FLOOR
SCALE 3/4" = 1'-0"



ELEVATION SECTION

TABLE
SCALE 3/4" = 1'-0"



DETAIL OF DRAWER
SCALE 1" = 1'-0"

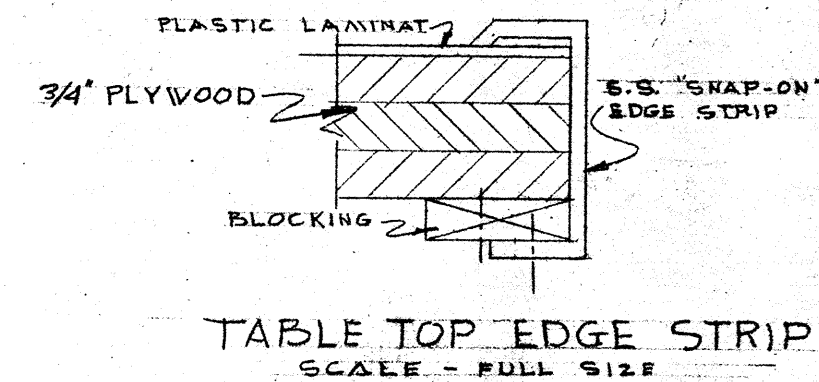
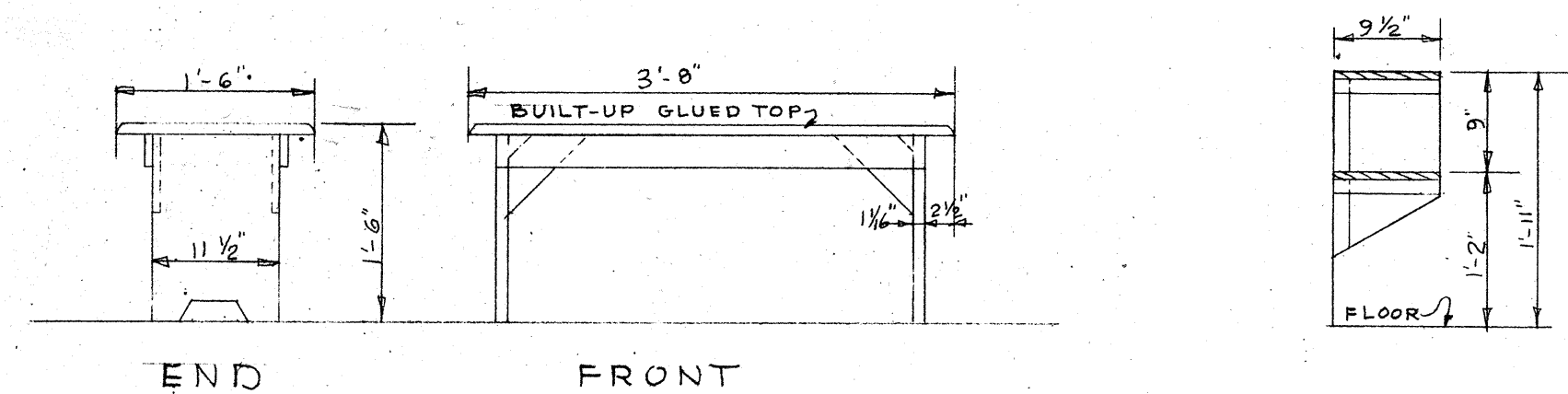
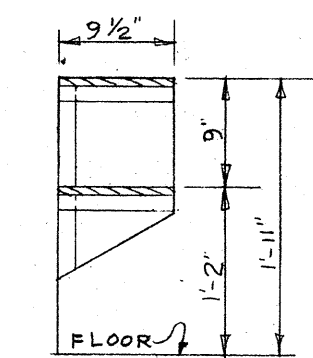


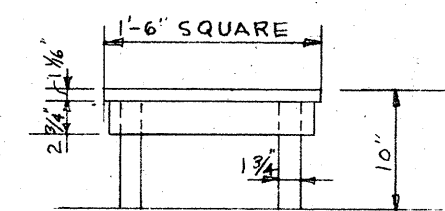
TABLE TOP EDGE STRIP
SCALE - FULL SIZE



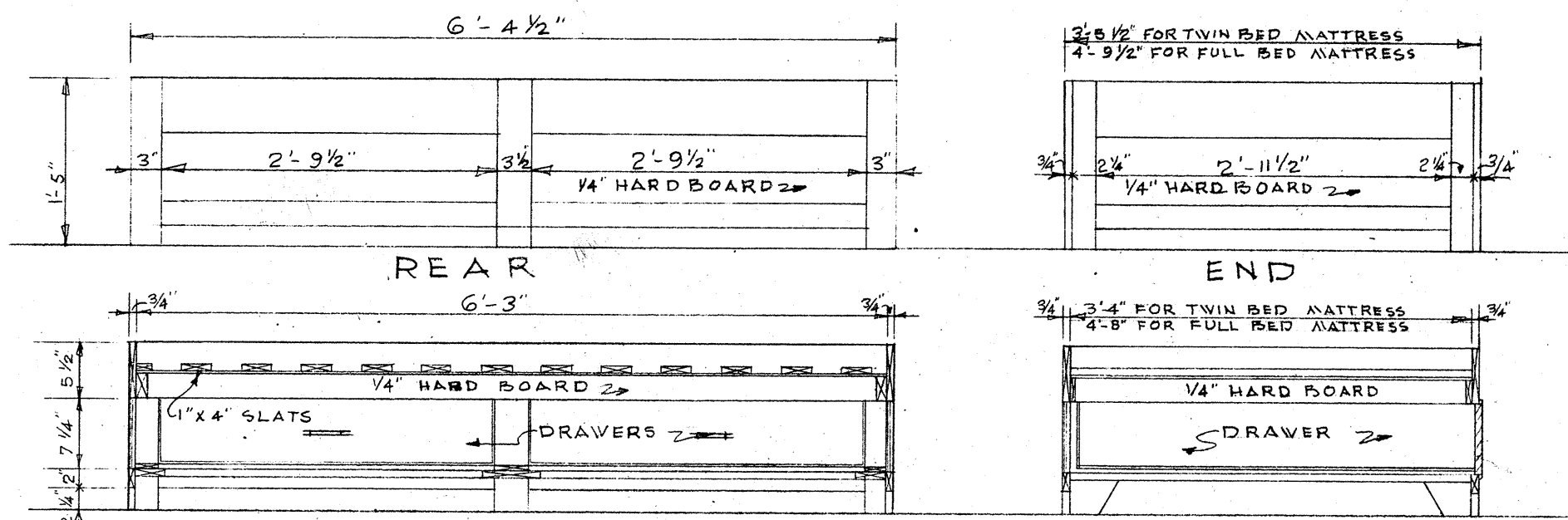
END FRONT
BENCH
SCALE 3/4" = 1'-0"



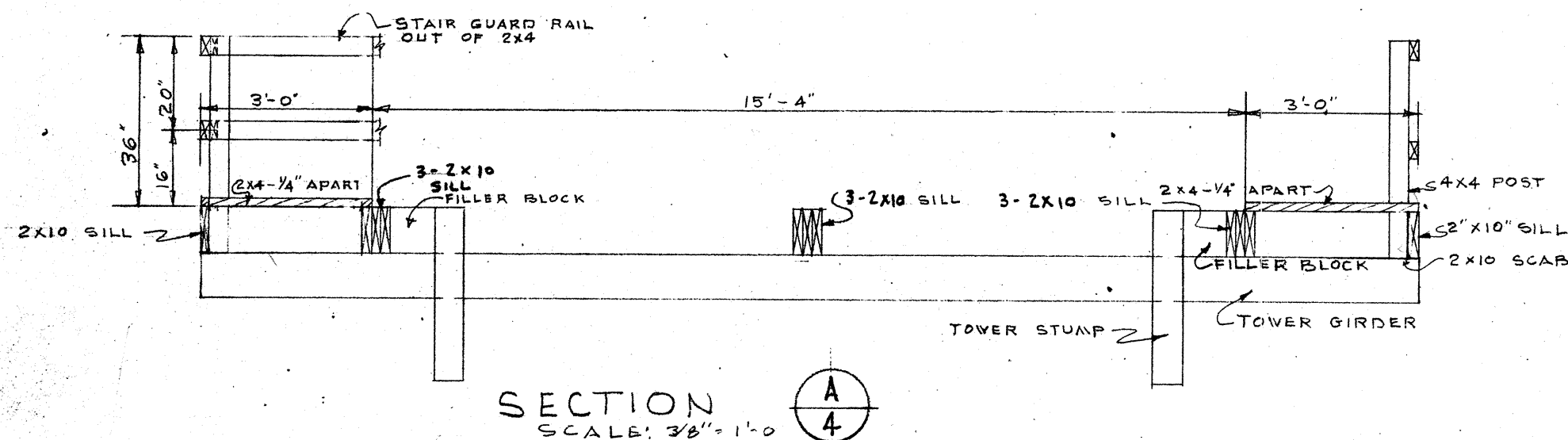
SHELVES
SCALE 3/4" = 1'-0"



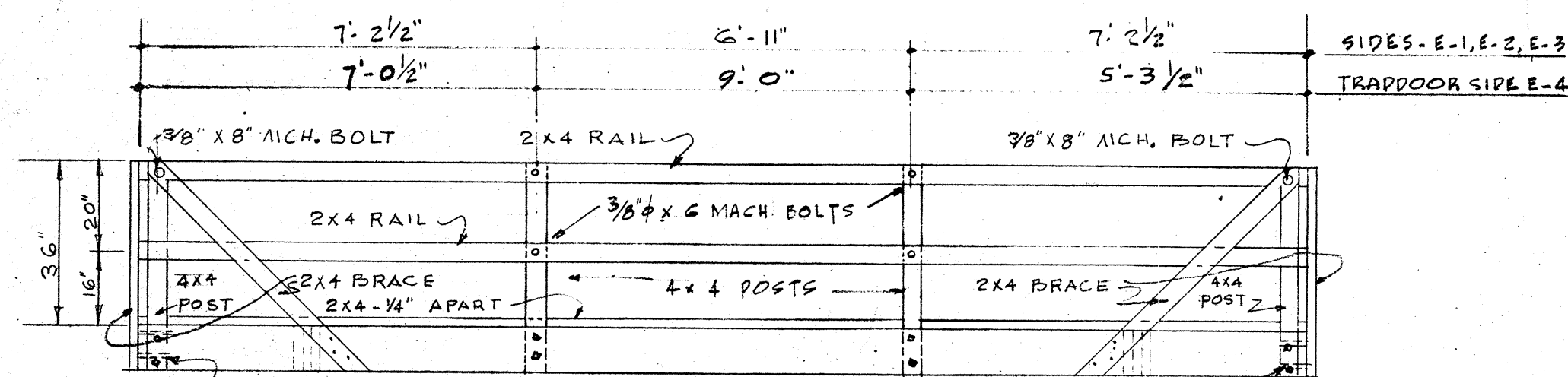
WATER STAND
SCALE 3/4" = 1'-0"



LONGITUDINAL SECTION CROSS SECTION
TWIN BED MATTRESS BUNK
SCALE 3/4" = 1'-0"

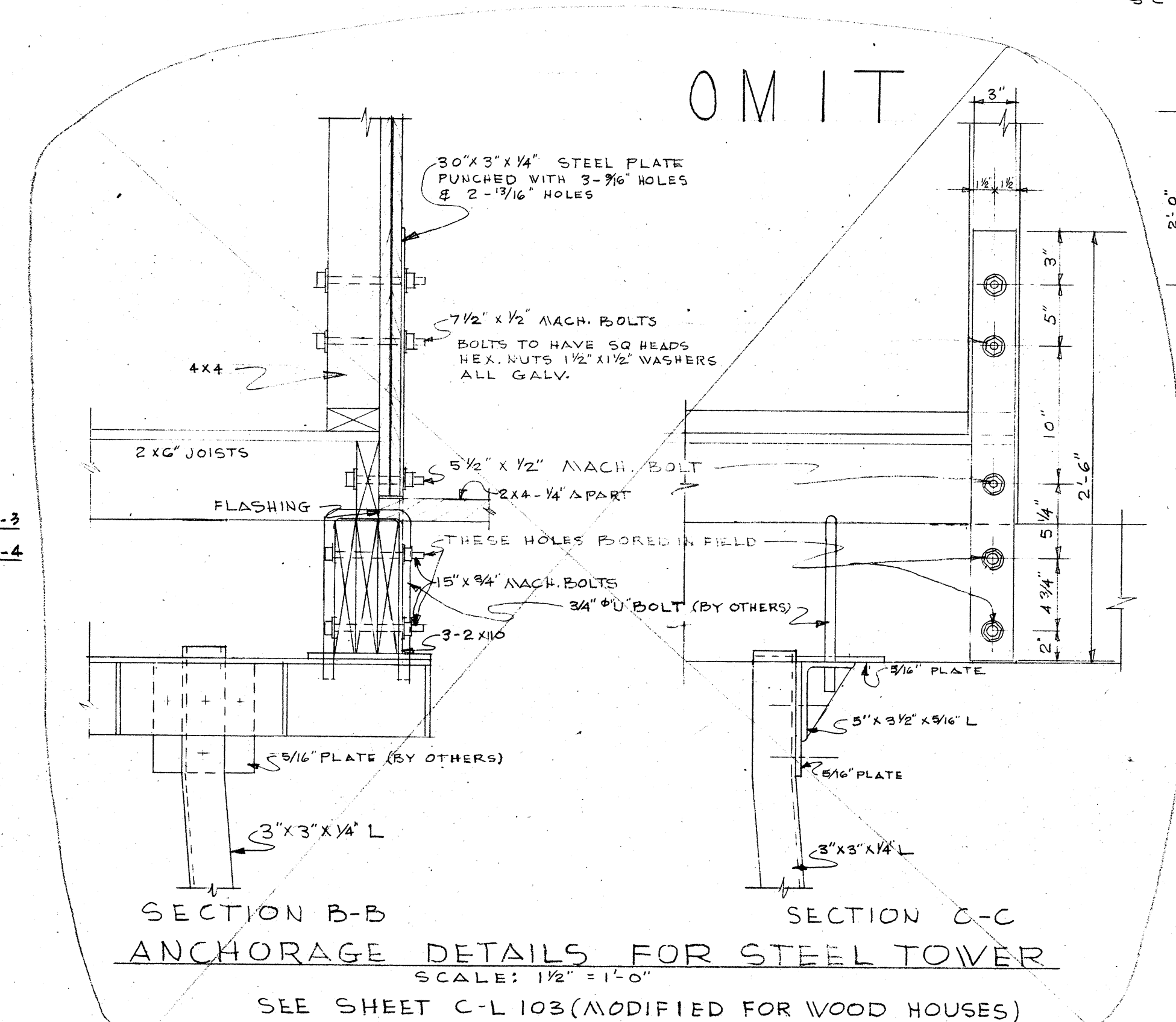


SECTION A-A
SCALE: 3/8" = 1'-0"



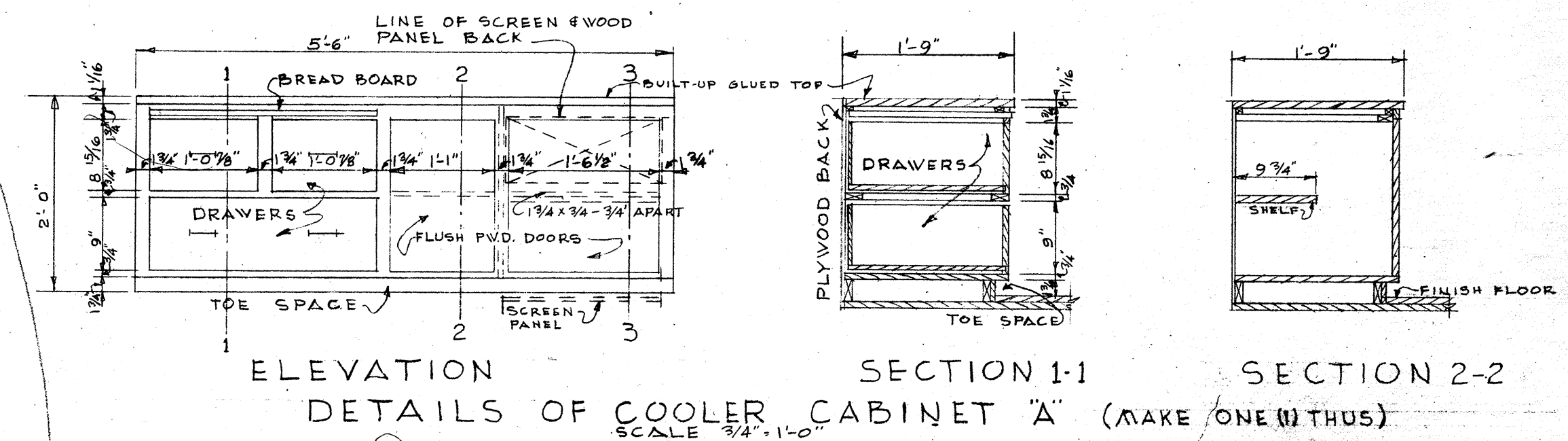
ELEVATION OF CATWALK & RAIL
SCALE: 3/8" = 1'-0"

NOTE: ALL BOLTS TO BE MACHINE BOLTS WITH TWO 1/4\"/>

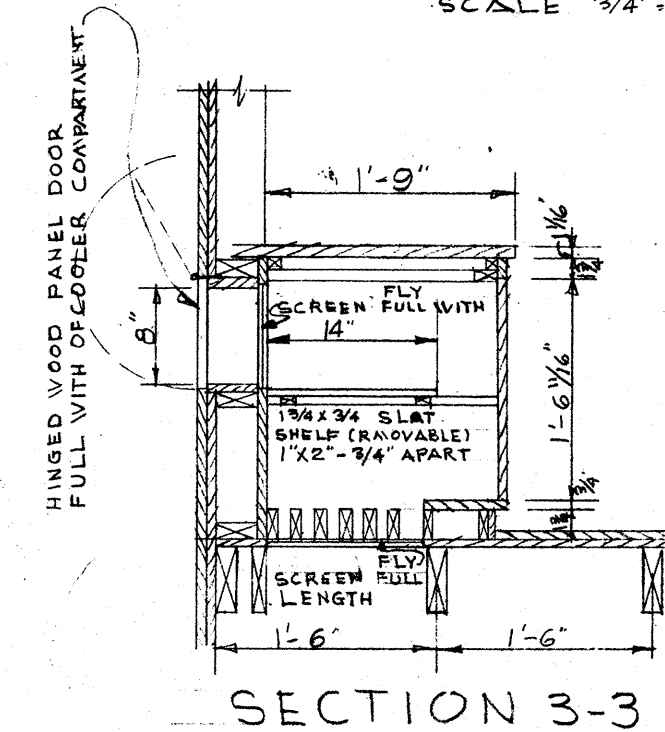


SECTION B-B SECTION C-C
ANCHORAGE DETAILS FOR STEEL TOWER
SCALE: 1/2" = 1'-0"

SEE SHEET C-L 103 (MODIFIED FOR WOOD HOUSES)



ELEVATION SECTION 1-1 SECTION 2-2
DETAILS OF COOLER CABINET 'A' (MAKE ONE OF THIS)
SCALE 3/4" = 1'-0"

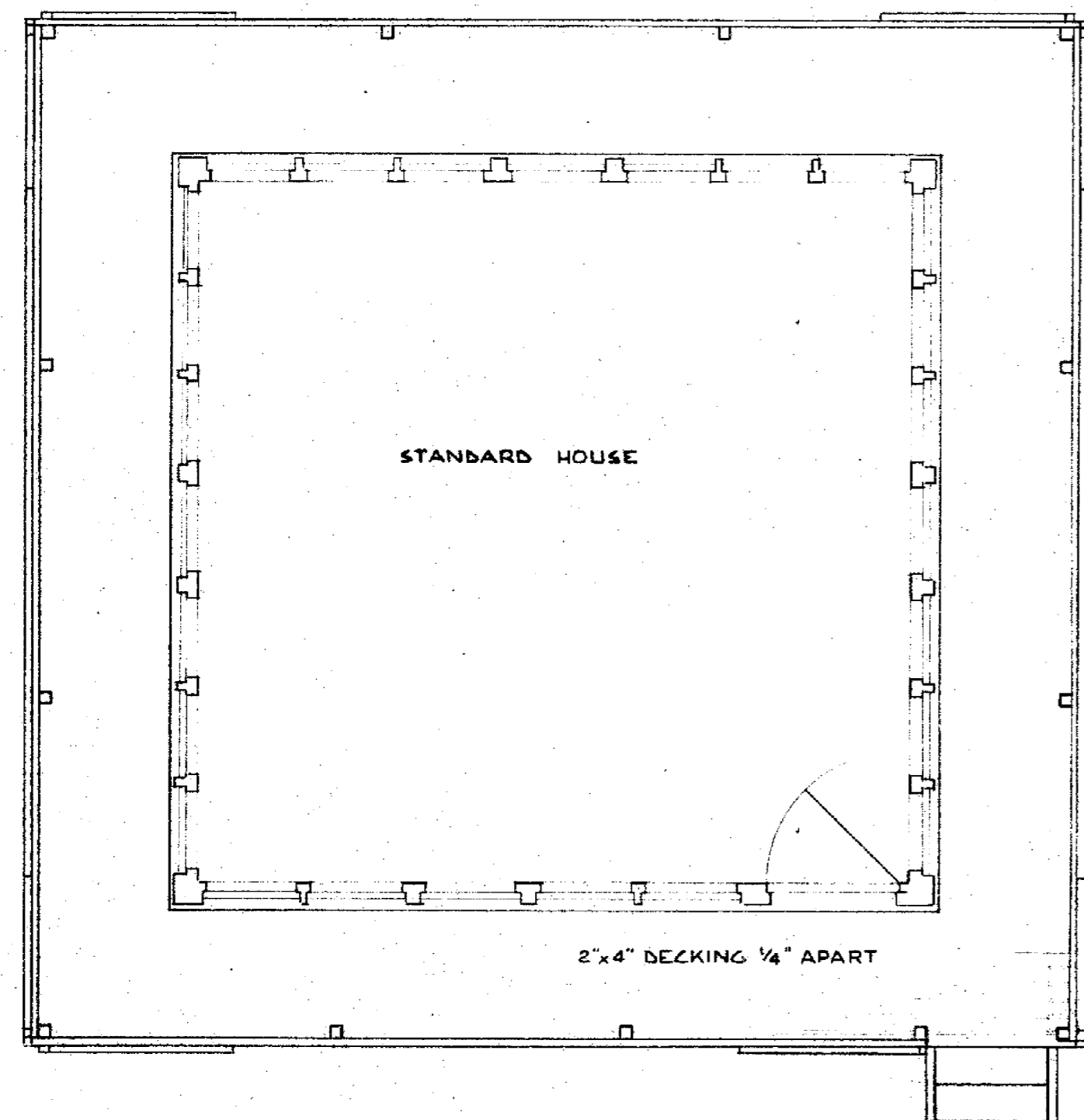


SECTION 3-3

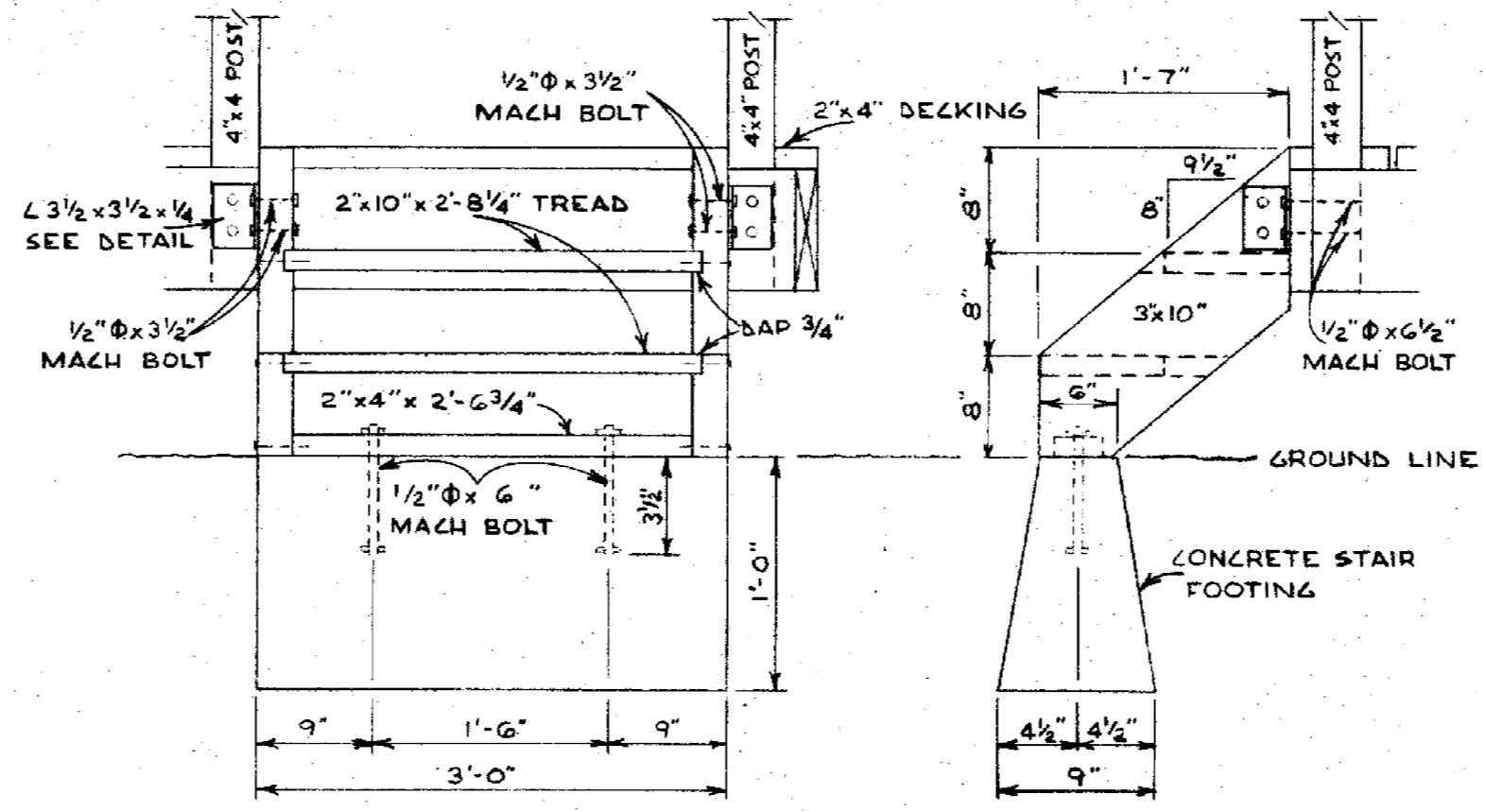
REVISED 2/28/62 P.W.C. *W.W. Jones*
U.S. DEPARTMENT OF AGRICULTURE
FOREST SERVICE
REGION SIX

LOOKOUT HOUSE
FURNITURE & CATWALK DETAILS

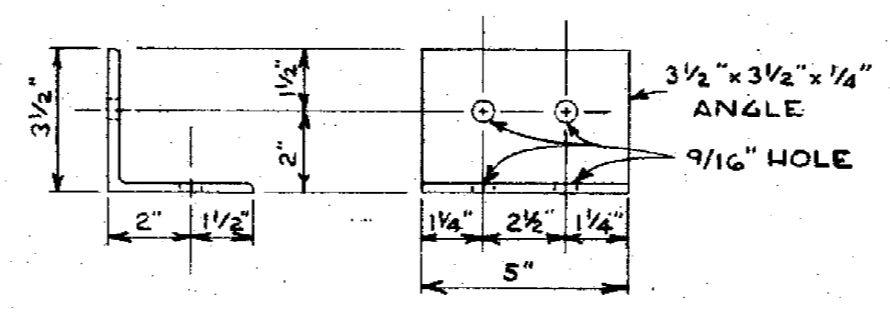
ARCHITECT: A. P. D. BENEDETTO DRAWN BY X
SCALE: AS SHOWN CHECKED
APPROVED: *W.W. Jones* REVISOR DATE: 3-1-62
REGIONAL ENGINEER



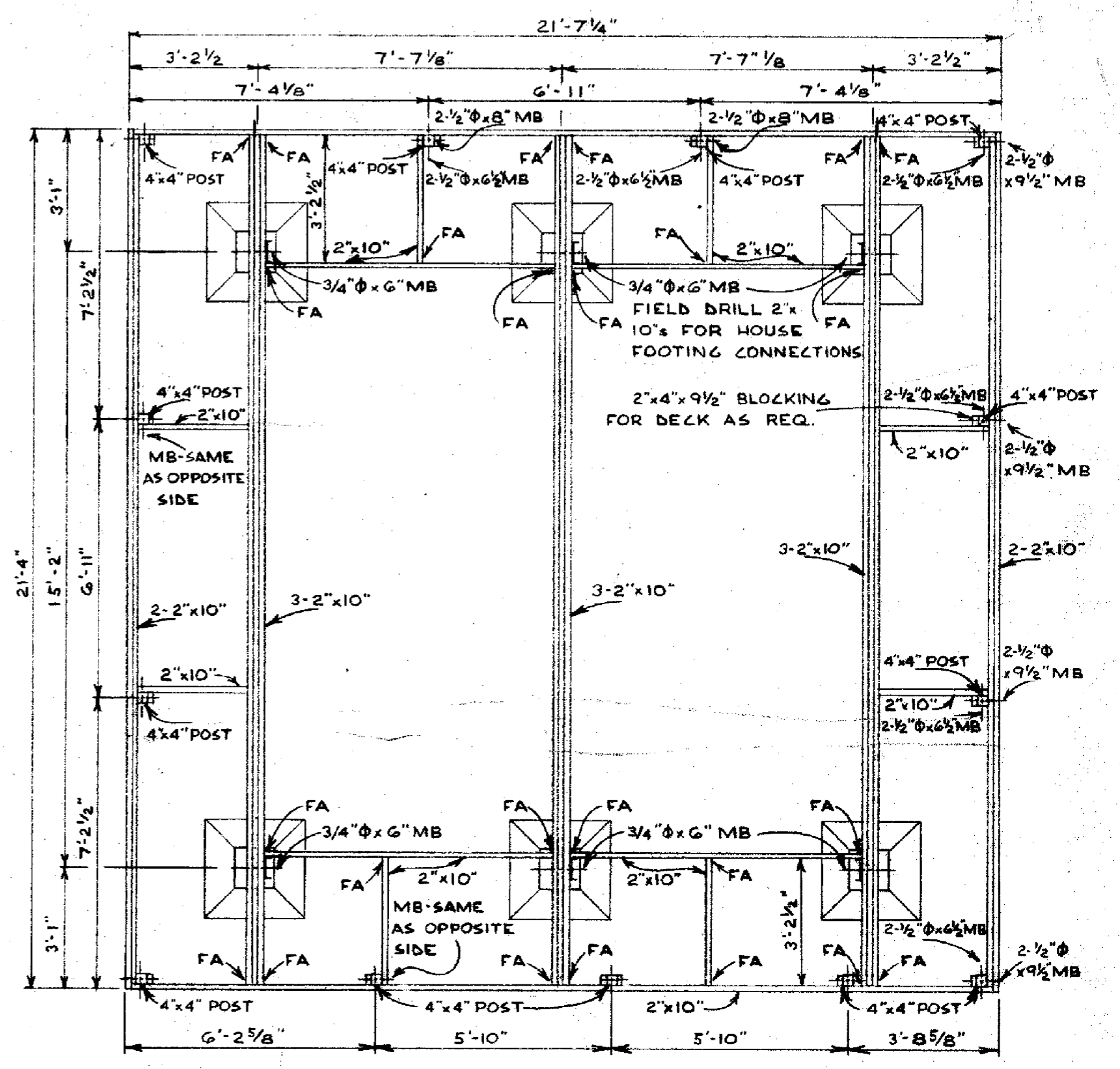
FLOOR PLAN
SCALE 3/8"=1'-0"



STAIR DETAIL
SCALE 1"=1'-0"

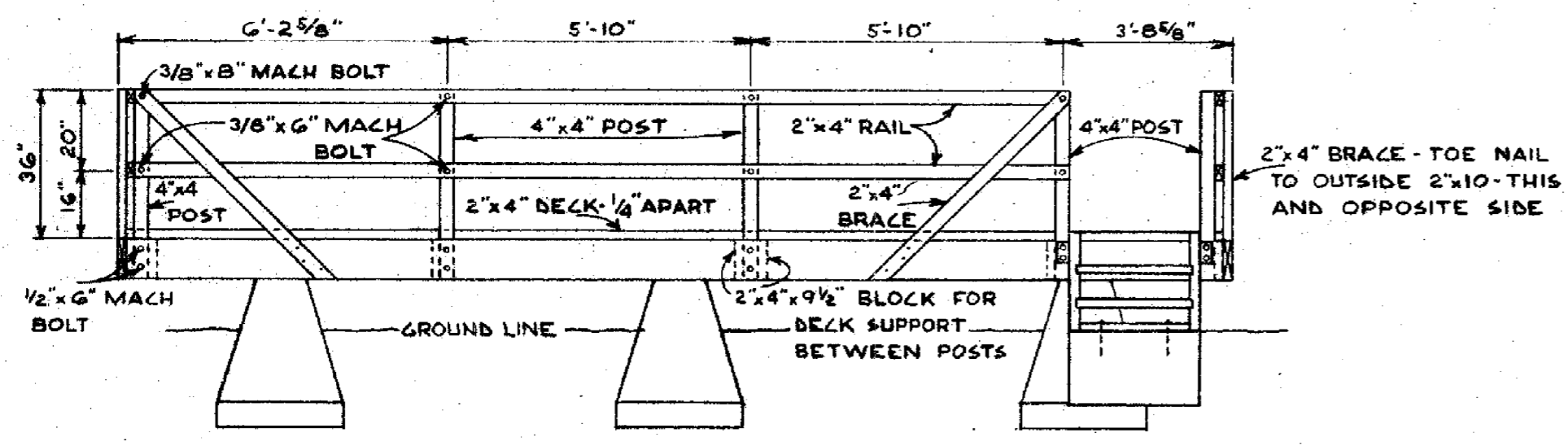


STAIR CONNECTION DETAIL
SCALE 3/8"=1'-0"
2 REQUIRED GALVANIZED

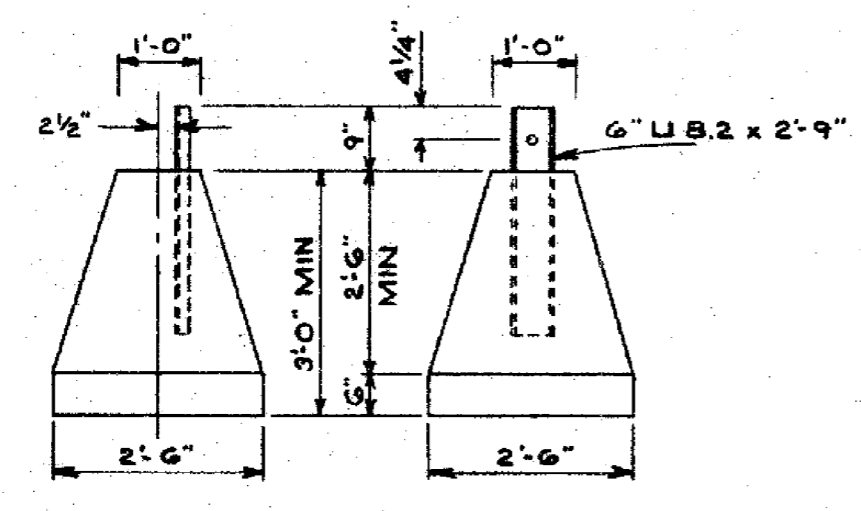


SILL PLAN
SCALE 3/8"=1'-0"

FA = FRAMING ANCHOR - GALVANIZED TYPE L
MB = MACHINE BOLT W/ 2-2 1/2" MALLEABLE WASHERS
NOTE - TIMBER MEMBERS SHOWN ON THIS PLAN & STAIR STRINGERS SHALL BE PRESSURE TREATED.



CATWALK & RAIL ELEVATION
SCALE 3/8"=1'-0"



HOUSE FOOTING
SCALE 1/2"=1'-0"
6 REQ'D

CONCRETE QUANTITIES

FOR MINIMUM DEPTHS SHOWN ON THE DETAILS

LOCATION	NO. REQ'D	UNIT QUAN.	TOTAL QUAN.
HOUSE FOOTING	6	0.42 yd	2.52 yds
STAIR FOOTING	1	0.07 yd	0.07 yd

REGIONAL BUILDING COMMITTEE	U. S. DEPARTMENT OF AGRICULTURE FOREST SERVICE REGION SIX	GROUND HOUSE DETAILS
APPROVED: E- <i>W. W. [Signature]</i> REGIONAL ENGINEER	ENGINEER LEM & CDS CHECKED CDS & R.R. SUBMITTED BY [Signature]	LOOKOUT HOUSE
O- _____ ASST. REGIONAL FORESTER	DRAWN BY: L.E.M. DATE: FEB 4, 1963	SHT 40
F- _____ ASST. REGIONAL FORESTER		