

3

**SPECIFICATIONS AND PLANS
FOR READY-CUT LOOKOUT HOUSE.**

RECEIVED
MAY 17
1926

**UNITED STATES DEPARTMENT OF AGRICULTURE
FOREST SERVICE**

W. B. Greeley, Forester.

C O N T E N T S

Pages

TABLE OF CONTENTS	2
Specifications for material for house	3-4
Cutting List of Lumber for House	5-10
List of Other Material for House	11-12
Erection Instructions and Tool List	13-14
Furniture and List of Material for Same	15-16
Lightning Protection Instructions	17-18
Lumber List for House (to be used when it is desired to buy lumber locally and have it cut on the ground)	19-24

These Specifications, Material Lists and Instructions should be used in connection with Plans for Ready-cut Lookout House, revised January 1922, Sheets Nos. A to L.

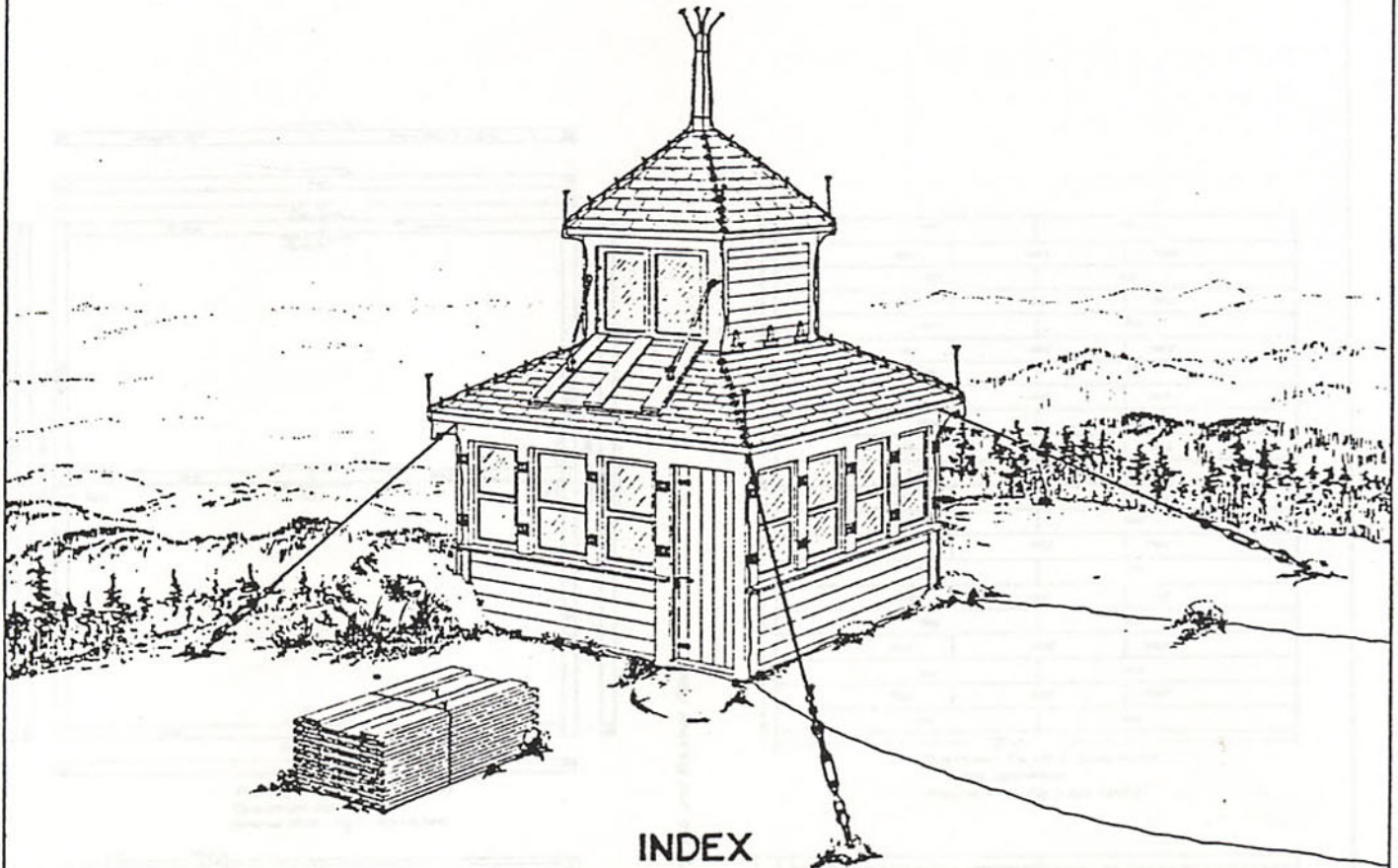
Pcs.:	Size	Length:	Description	Forwarded	St. P.M.
				2537	
2	1 3/8" x 6" n	14'	Douglas Fir, Rev. Window Sill		54
3	1x6	14	" " T&G #2 Clr. & Bttr. VG Floor.		21
21	"	16	" " " " " " " "		168
1	"	6	" " " " " " " "		3
1	1" n x 6" n	14	" " #2 Clr. & Bttr. S4S		9
1	1 1/2" n x 6" n	3'6"	" " " " " " " "		5
14	3/4" n x 7" n	12	" " Shiplap		112
2	x 3 1/2" n	12	" " " " " " " "		8
3	x 5 1/2" n	12	" " #2 Clr. & Bttr. S4S		18
			or alternate.		
52	1x4	12	Douglas Fir, #2 Clr. & " V and CV Ceiling		208
1	3/8" n x 2 1/2" n	10	Douglas Fir, #2 Clr. & Bttr. S4S		3
3	x 1 1/2" n	12	" " " " " " " "		36
1	x 10" n	10	" " " " " " " "		10
2	x 5 1/2" n	8	" " " " " " " "		8
8	x 5 1/2" n	14	" " " " " " " "		56
1	1" n x 11" n	6	" " " " " " " "		6
1	x 13" n	2	" " " " " " " "		2
1	5/8" n x 3 1/2" n	6	" " " " " " " "		2
1	x 2" n	14	" " " " " " " "		3
1	x 11" n	7	" " " " " " " "		7
1	1x4	14	" " " " " V&CV Ceil.		5
1	"	14	" " " " " S4S		5
90	3/4" n x 3" n		Hardwood Buttons (per detail)		
100	"		" Cleats " " " "		24
35	1 1/2" n x 3 1/2" n		" Blocks " " " "		
			Total		3310

Total weight, approx. 7,000 lbs.

NOTE: If ceiling is used for shutters instead of shiplap, total will be about 3,360 ft.

U.S. DEPT. OF AGRICULTURE
FOREST SERVICE
District 6

READY CUT LOOKOUT HOUSE



INDEX

FIG. NO.	DESCRIPTION-SHEET LETTER- PAGE NO. ON ON BLUE PRINT CUTTING LIST	FIG. NO.	DESCRIPTION-SHEET LETTER- PAGE NO. ON ON BLUE PRINT CUTTING LIST
1	FLOOR SILLS & LEVELS B --- 5	21	TOWER FLOOR PLAN F --- 8
2	FLOOR JOIST B --- 5	22	DETAIL OF DOOR F --- 9
3	SUB FLOORING B --- 5	22-A	DETAIL OF THRESHOLD F --- 9
4	FINISHED FLOORING D --- 5	23	DETAIL OF TOWER SHUTTER F --- 9
5-6	FRAMING ELEVATIONS C --- 5	23-A	TOWER SHUTTER FASTENER-F --- 12
7	SHEATHING ELEV. C --- 6	24	LADDER F --- 10
8	TOWER JOIST-FLOORING & LADDER LOCATION C --- 6	25	PLAN OF SHELVING I --- 10
9-10-11	TOWER BRACES C --- 6	26	DETAIL OF FINDER STAND I --- 10
12-12 B	TOWER FRAME & DETAILS OF FLASHINGS D --- 6	27	DETAIL OF ANCHOR RODS I
13	RAFTERS D --- 6	28	ANCHOR CABLE FASTENING I --- 11
14	SHEATHING & SHINGLES D --- 7	29	TURNBUCKLE & ANCHOR ROD I --- 12
15-16	SIDING ELEVATIONS D --- 7	30	LIGHTNING PROTECTION J --- 10
17	DETAIL OF MAIN CORNICE E --- 7	31-31A	BUTTONS FOR FASTENING SHUTTERS K --- 10
18	DETAIL OF TOWER E --- 7	32	LOWER FLOOR WINDOW SHUTTERS-K --- 9
19-A-B-C	WINDOW SILL DETAILS E --- 8	33	BLOCKS UNDER LOWER FLOOR WINDOW SILLS-K - 9
19-D	BLOCK UNDER TOWER WINDOW SILLS E --- 8	34	CORNER IRON SUPPORTING GUY CABLES -K - 11
20	TOWER FLOOR PLAN SHOWING WINDOWS F --- 8	35	BEDSTEAD L - 15
		36	TABLE L - 15

U.S. DEPT. OF AGRICULTURE
FOREST SERVICE
District 6

READY CUT LOOKOUT HOUSE

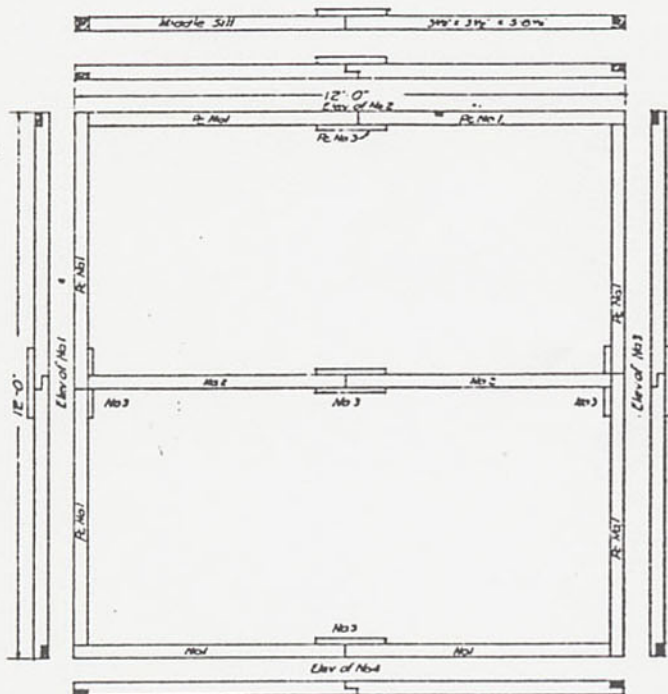
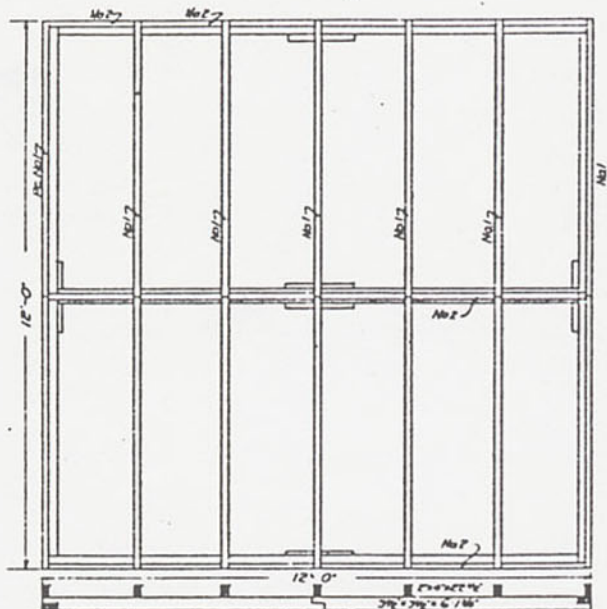


Fig. No. 1 Sills Scale 1/2" = 1'-0"
Operation No. 1
Material Mhd. Fig. 1 Rcs 1 No. 3mc

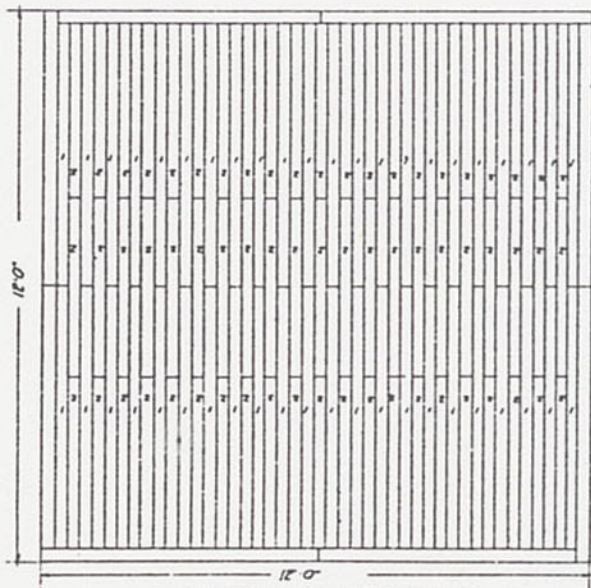


12'-0"
Subfloor Fig. No. 3 Scale 1/2" = 1'-0"
2nd operation
Material Mhd. Fig. 3 pcs 1 and 2

2 Ply roof paper between sub and finished floors



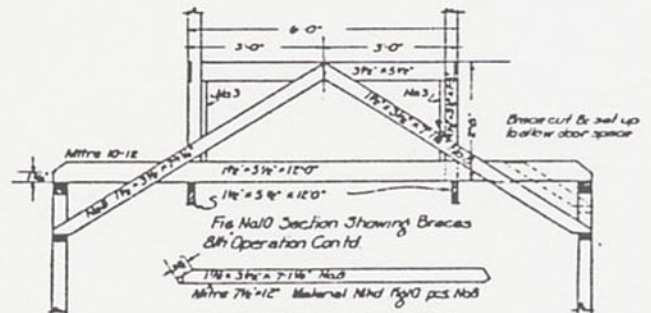
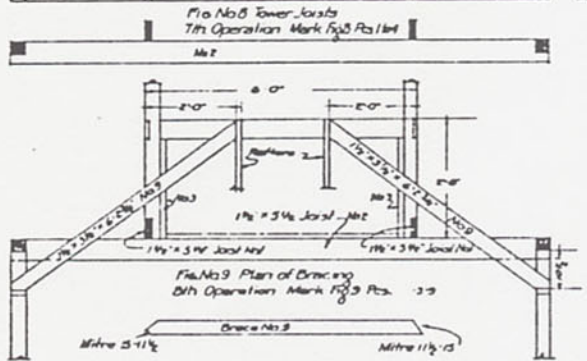
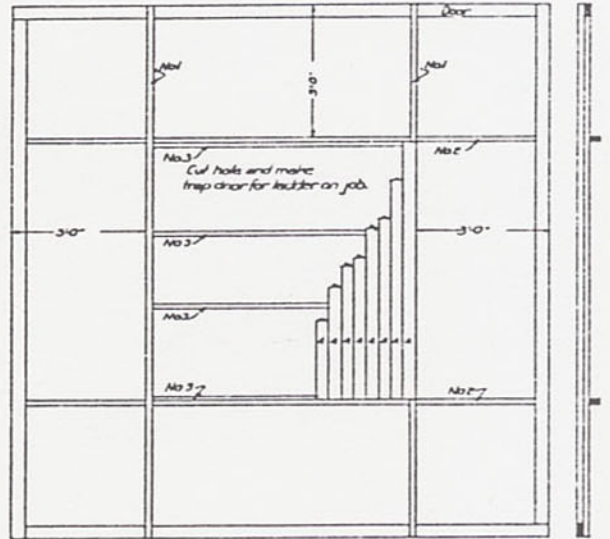
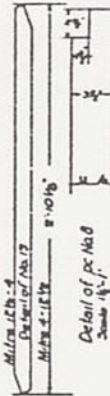
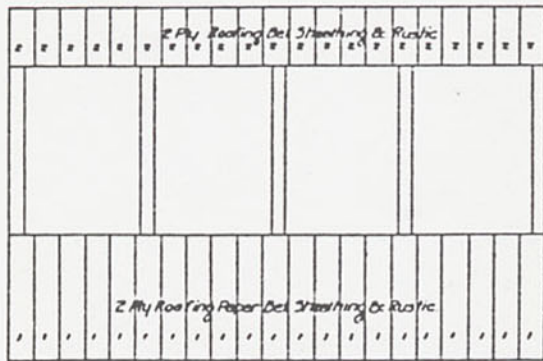
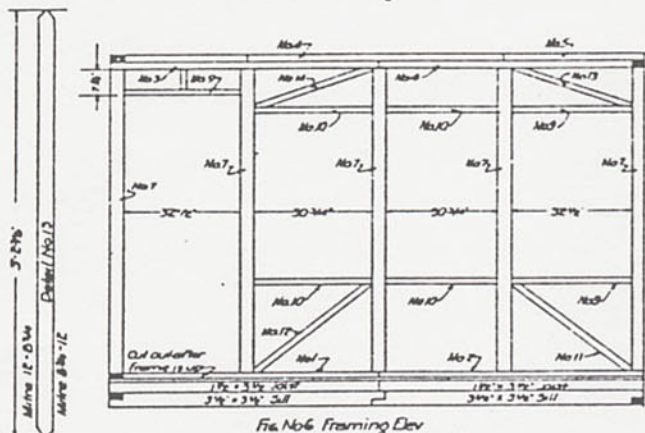
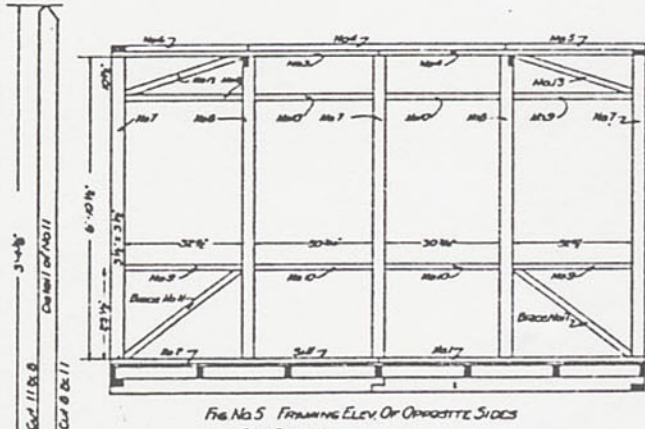
Floor Joists Fig. No. 2 Scale 1/2" = 1'-0"
2nd Operation
Material Mhd. Fig. 2 Rcs 1 B2



12'-0"
Finished Floor Fig. No. 4 Scale 1/2" = 1'-0"
4th Operation
Material Mhd. Fig. 4 Rcs 1 B2

U.S. DEPT. OF AGRICULTURE
FOREST SERVICE
District 6

READY CUT LOOKOUT HOUSE



READY CUT LOOKOUT HOUSE

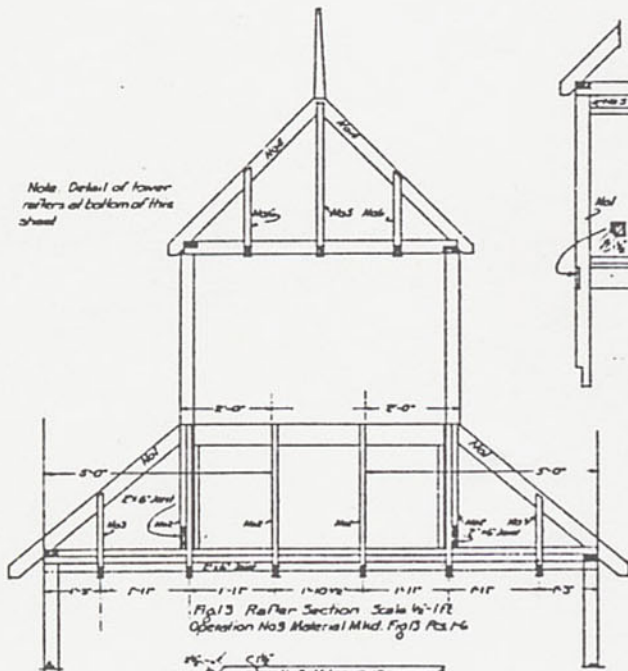


Fig. 13 Rafter Section Scale 1/4"=1'-0"
Operation No. 3 Material Mhd. Fig. 13 Pcs. 6



Detail of Rafter for No. 10-12
Cut 10-12
1'-0"
No. 3
No. 4
No. 5
No. 6
No. 7
No. 8
No. 9
No. 10
No. 11
No. 12
No. 13
No. 14
No. 15
No. 16
No. 17
No. 18
No. 19
No. 20
No. 21
No. 22
No. 23
No. 24
No. 25
No. 26
No. 27
No. 28
No. 29
No. 30
No. 31
No. 32
No. 33
No. 34
No. 35
No. 36
No. 37
No. 38
No. 39
No. 40
No. 41
No. 42
No. 43
No. 44
No. 45
No. 46
No. 47
No. 48
No. 49
No. 50

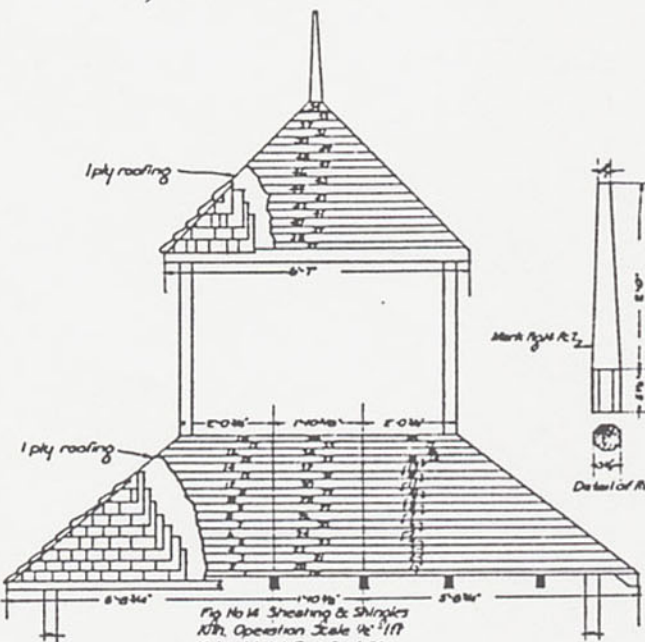


Fig. 14 Sheathing & Shingles
1/4" Operation Scale 1/4"=1'-0"
Material Mhd. Fig. 14 Pcs. 54

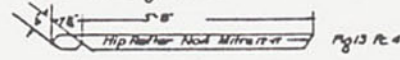


Fig. 13 P. 4

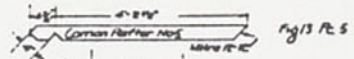


Fig. 13 P. 5

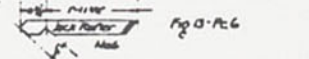


Fig. 13 P. 6

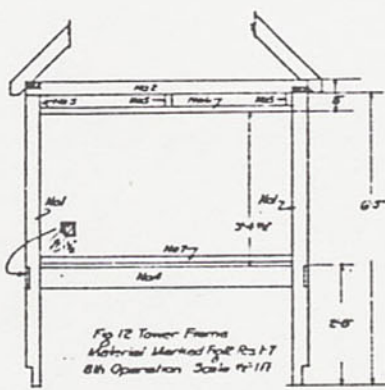


Fig. 12 Tower Frame
Material Marked for Pcs. 1-7
8th Operation Scale 1/4"=1'-0"

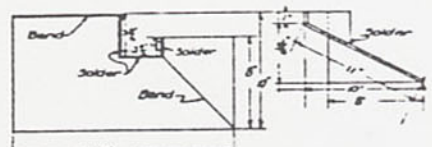


Fig. 12a Detail of Flashing at Corners
of Towers Note & Rights & Lefts
To be made up ready to place Scale 1/4"=1'-0"

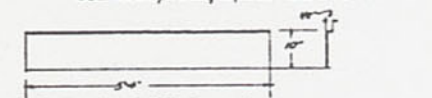


Fig. 12b detail of flashing detail
lower corners to be fastened on
block under window sills See
Fig. 1d sheet 'E'

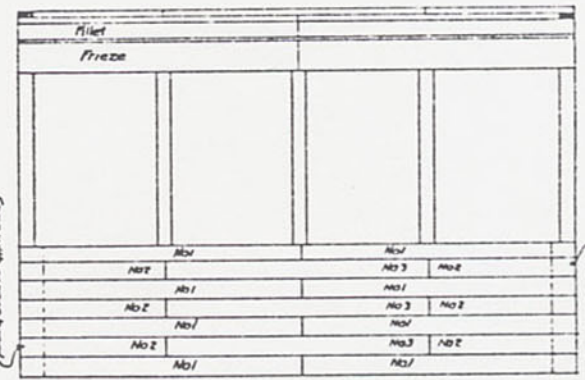


Fig. 15 Siding Elevation
11th Operation
Mark Fig. 15 Pcs. 4

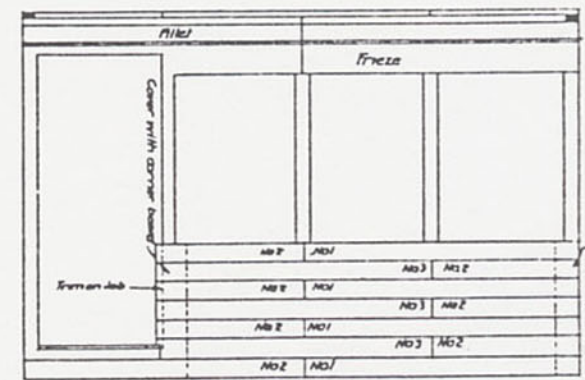


Fig. 16 Siding Elevation
11th Operation Cont'd Scale 1/4"=1'-0"

Note - Use extra piece of ship lap under rustic
and all sides of door as filler
Marked Fig. 16 P. No. 4

U.S. DEPT. OF AGRICULTURE
FOREST SERVICE
District 6

READY CUT LOOKOUT HOUSE

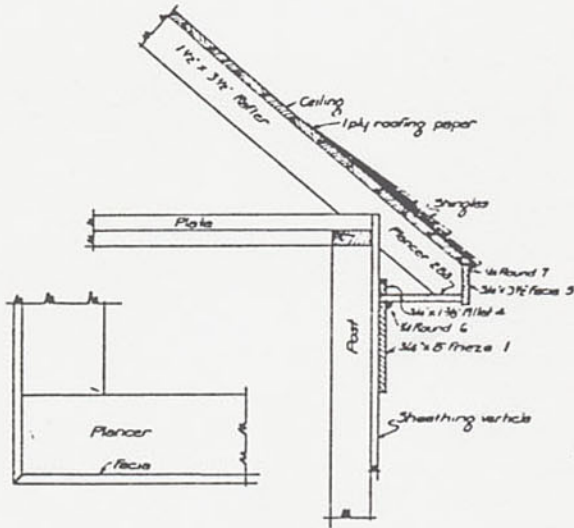


Fig 17 Detail Of Main Cornice
12th Operation Scale 1/4"=1ft
Material Marked Fig 17 Pcs 1-7

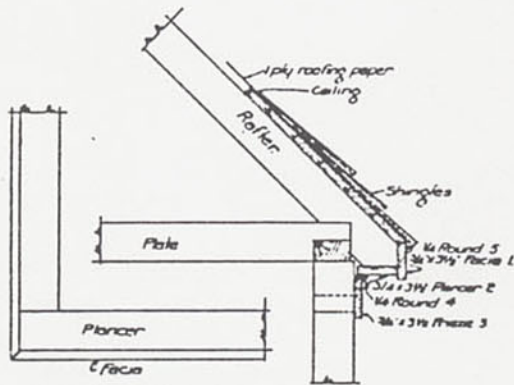


Fig 18 Detail Of Tower Cornice
15th Operation
Material Marked Fig 18 Pcs 1-3

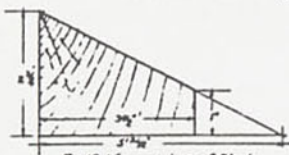


Fig 19d Cross-section of Block
Under Tower Sill
Scale 1/2"=1'
Make 4 pcs 3-3/4" long
Mark Fig 19 Pcs 1

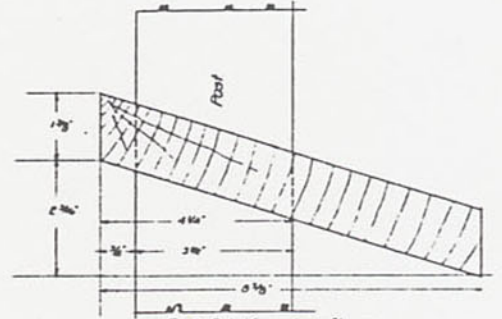


Fig 19a Detail Cross-section of Lower
Floor Window Sill
Scale 1/2"=1'

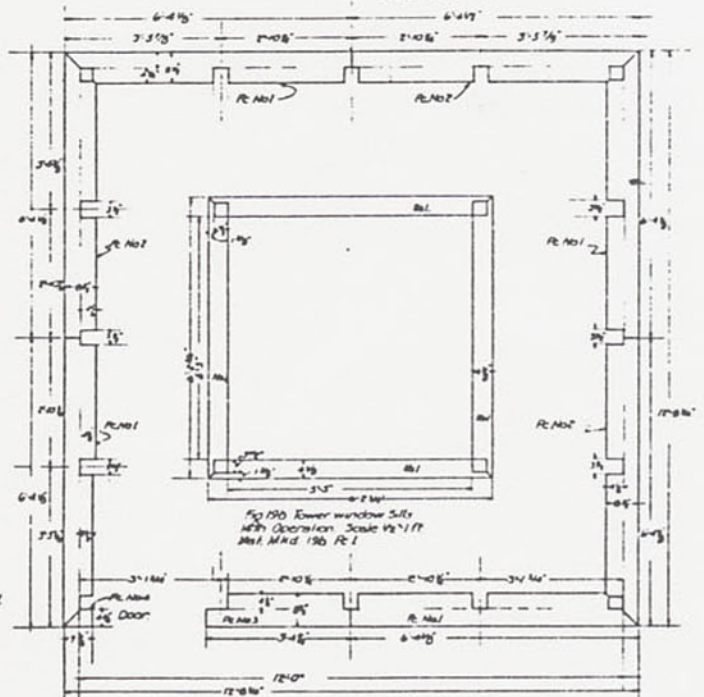


Fig 19d Lower window Sills
With Operation Scale 1/2"=1ft
Mat. Marked 150 Pcs 1

Fig 19 Lower Floor Sills Scale 1/2"=1ft.
With Operation
Material Marked Fig 19 Pcs. 1-4

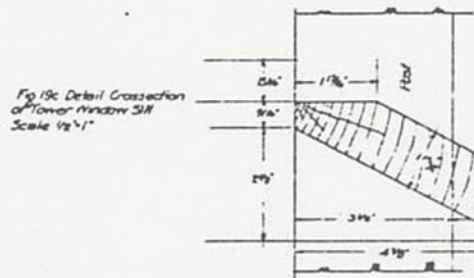
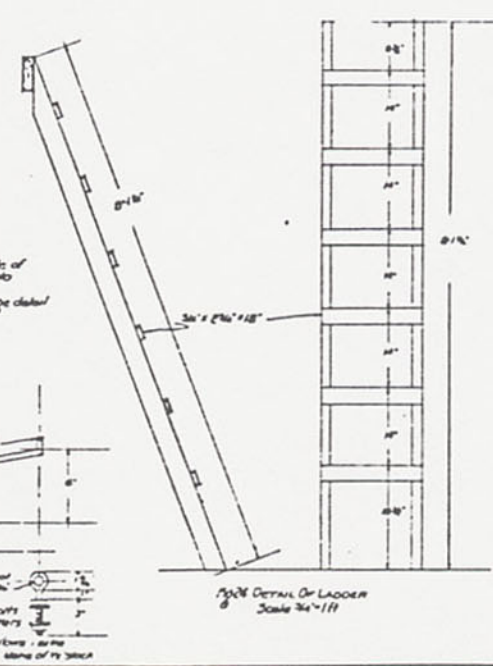
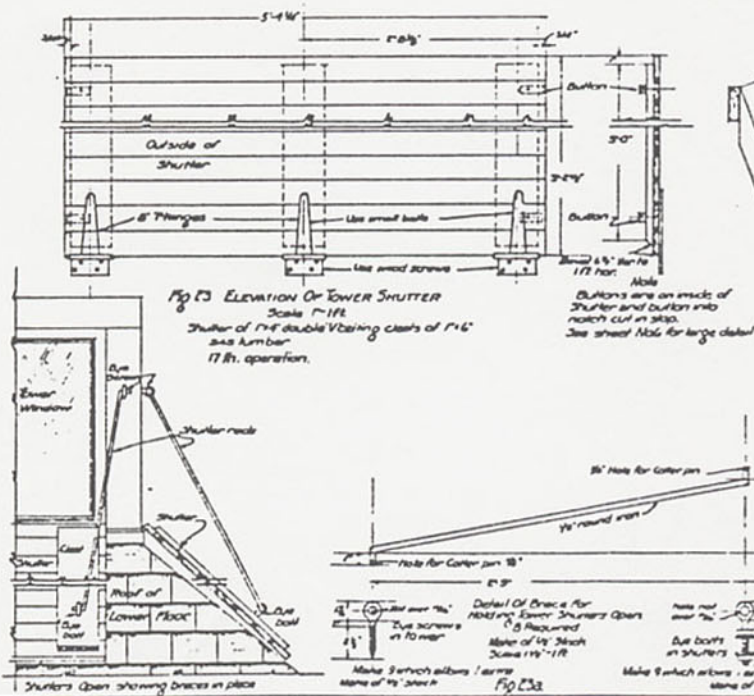
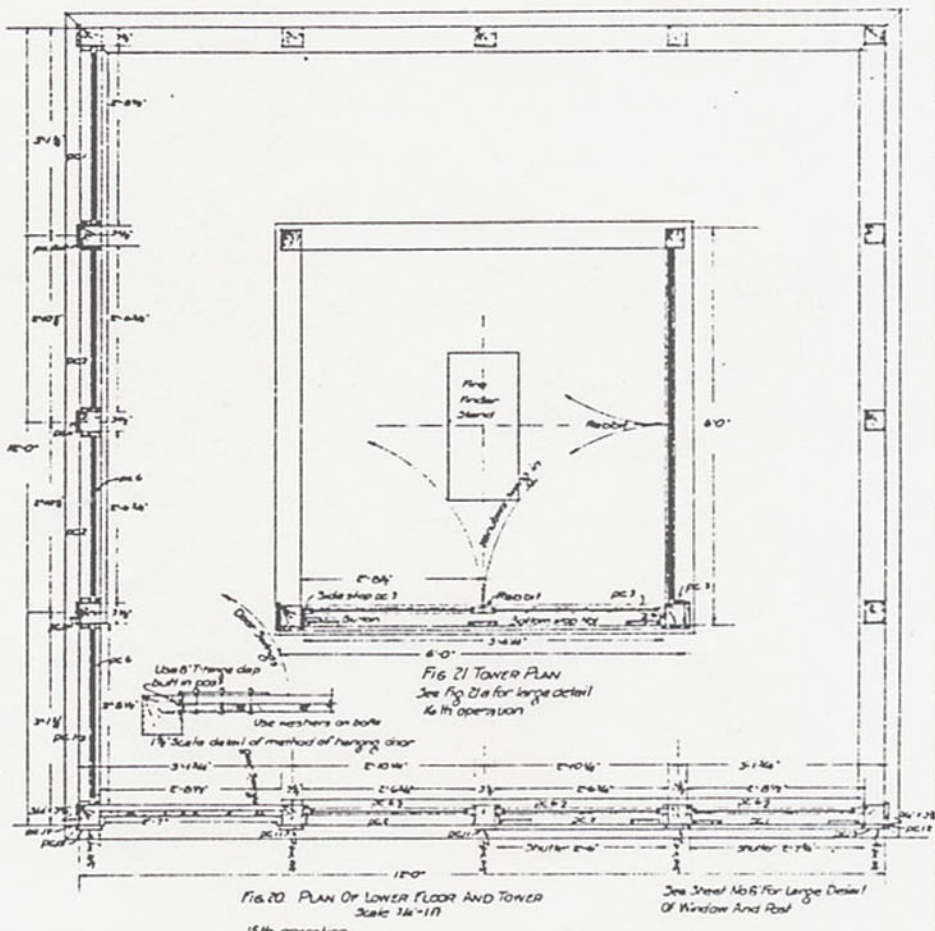
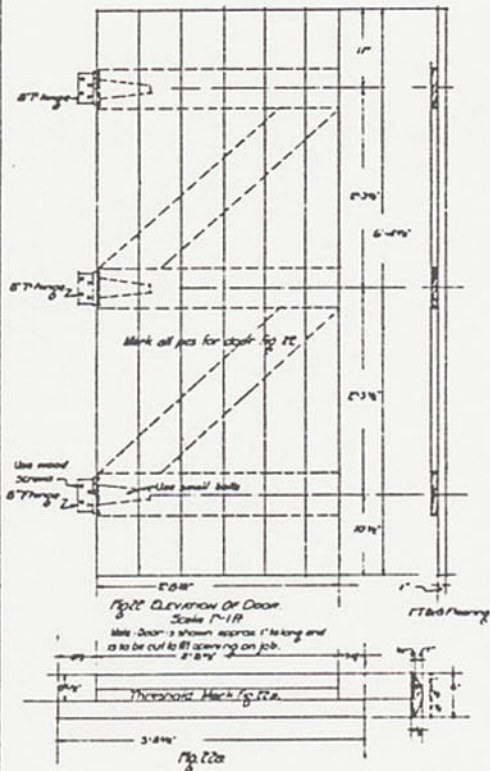


Fig 19c Detail Cross-section
of Tower Window Sill
Scale 1/2"=1'

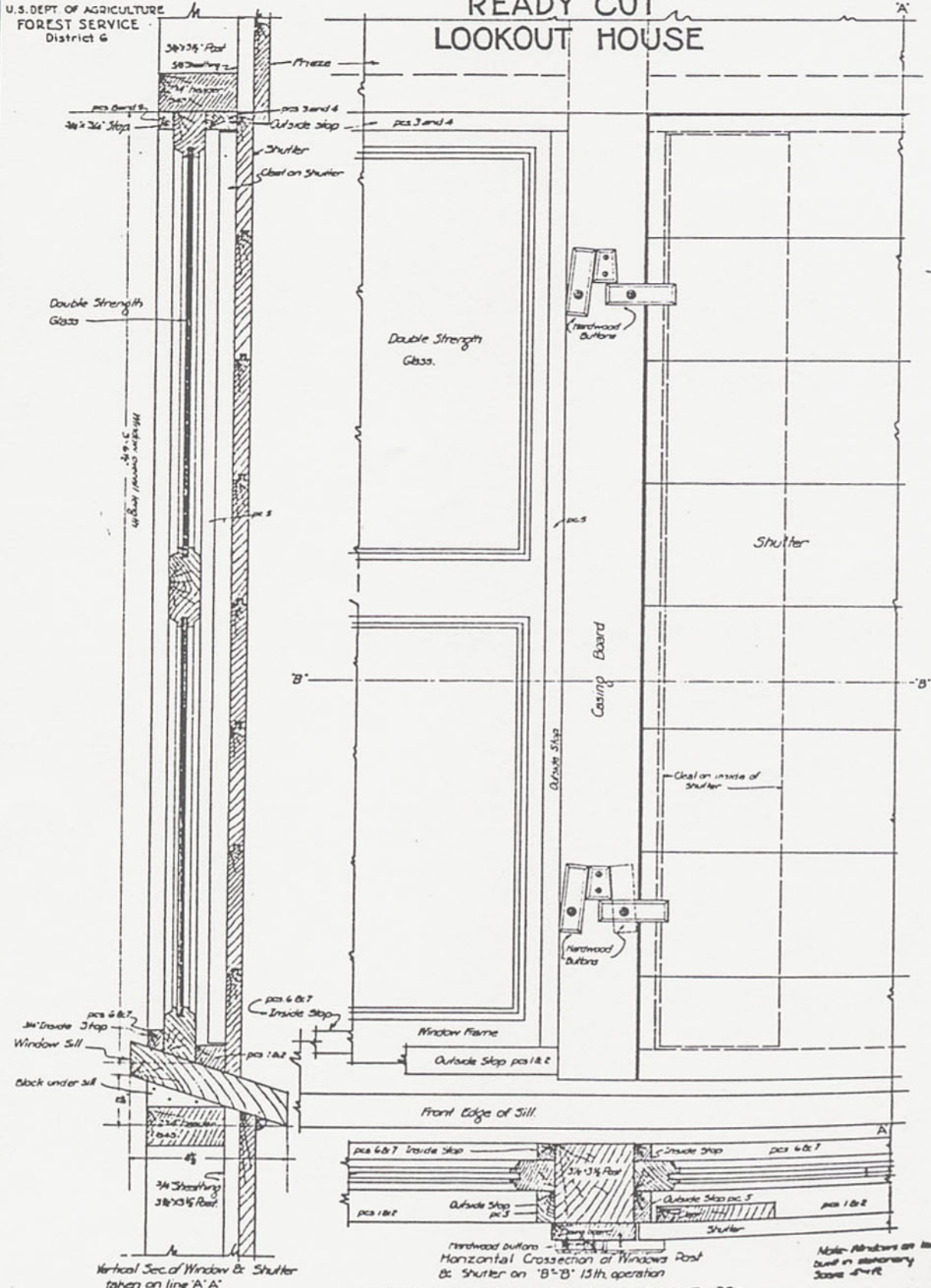
C. M. Allen
Portland, Ore.
Dec. 1921 - C.V.H.

READY CUT LOOKOUT HOUSE



U.S. DEPT. OF AGRICULTURE
FOREST SERVICE
District 6

READY CUT LOOKOUT HOUSE

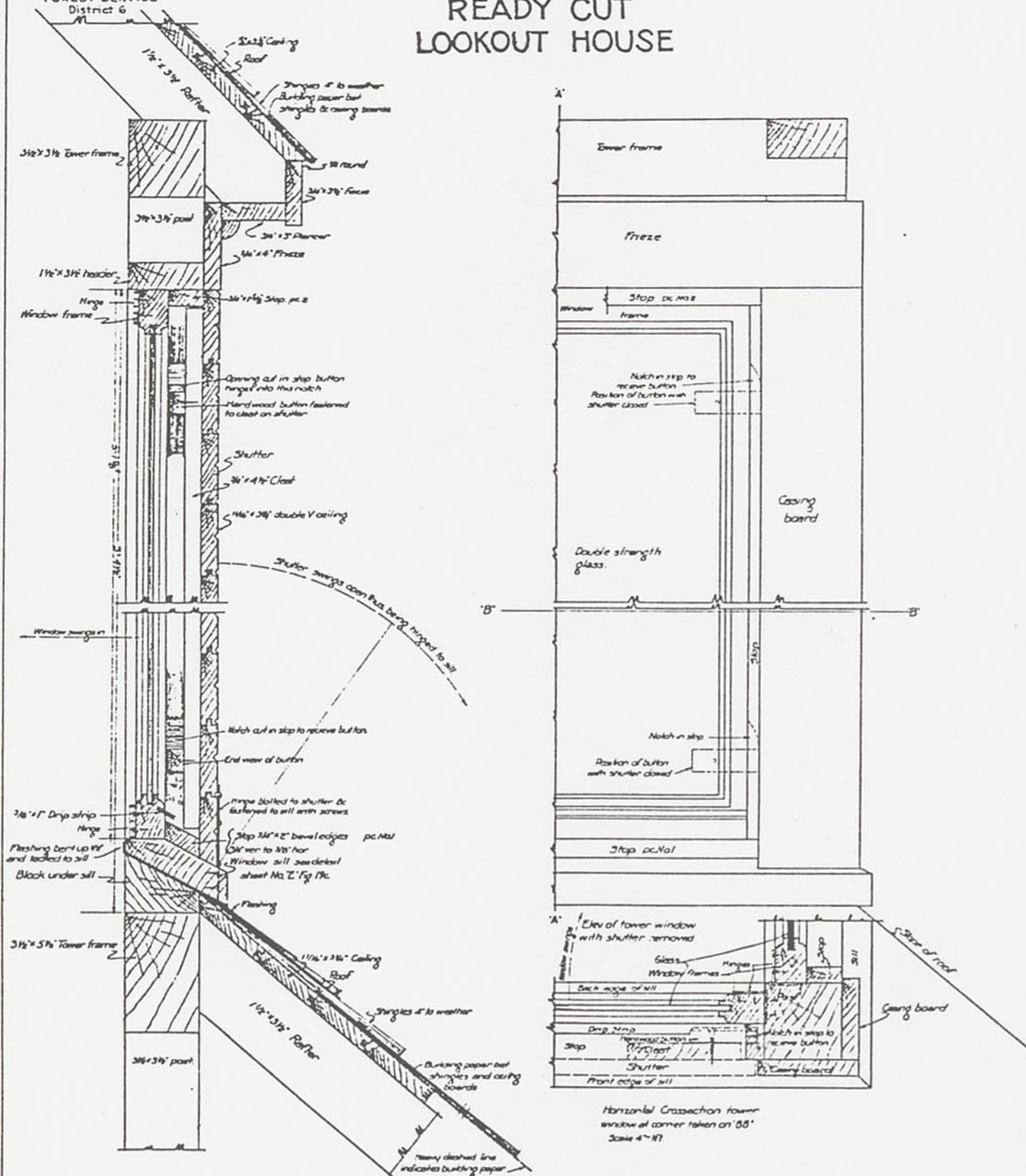


DETAIL OF FRAMING WINDOWS ON LOWER FLOOR FIG. 203

Note: Windows on lower floor are built in stationary frame - J.W.P.
C. M. Allen
Portland Ore.
Dec. - 23 - 1918

READY CUT LOOKOUT HOUSE

U.S. DEPT OF AGRICULTURE
FOREST SERVICE
District 6



Cross-section of tower window
shown on 'A-A' Article
Scale 4"-11" All dimensions net

FIG. 21a. DETAIL OF TOWER WINDOWS
With operation contd.

READY CUT LOOKOUT HOUSE

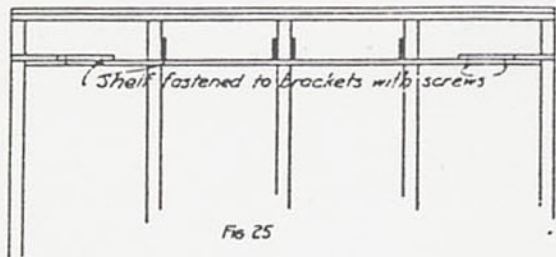
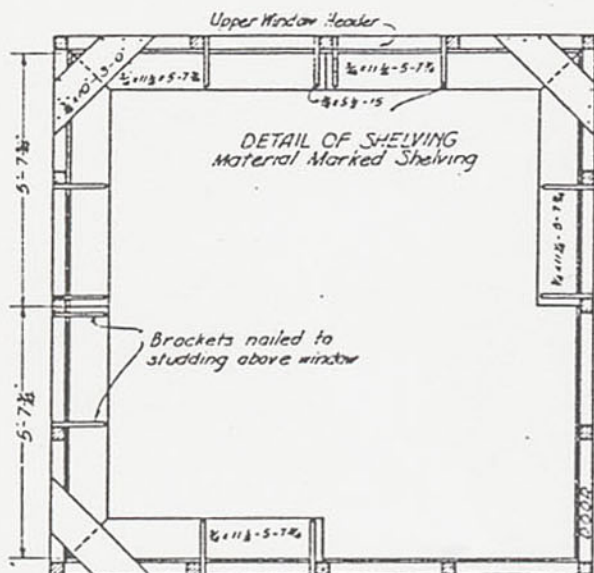
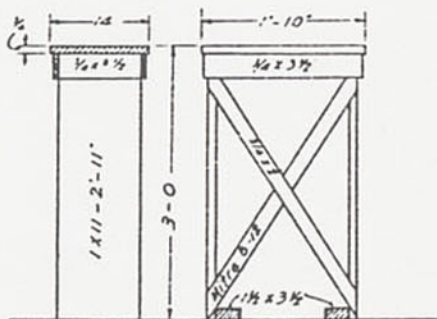


Fig 25



STAND FOR FIRE FINDER
Material Marked Fire Finder
To be in center of tower floor

Fig 26

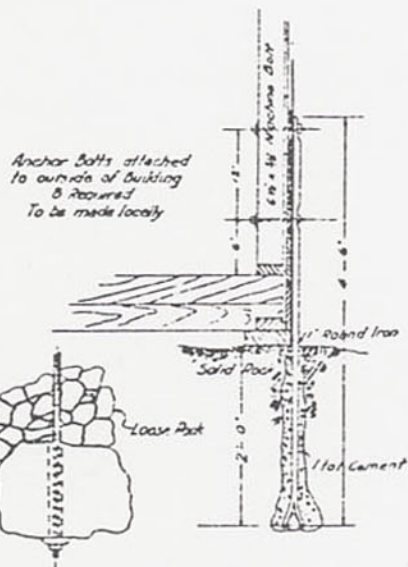


Fig 27

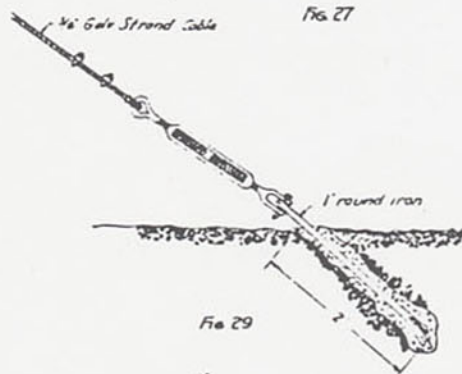


Fig 29

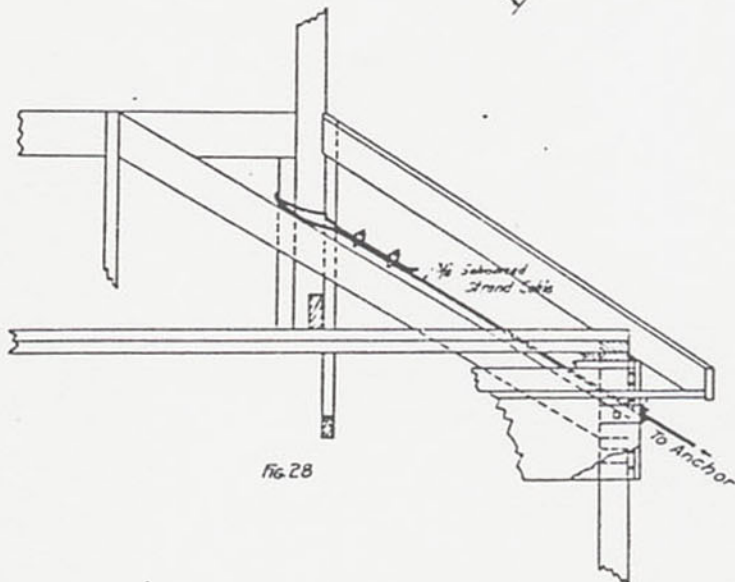


Fig 28

U.S. DEPT. OF AGRICULTURE
FOREST SERVICE
District #

READY CUT LOOKOUT HOUSE

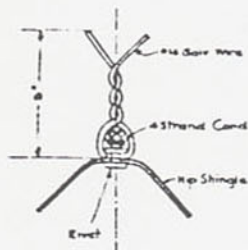
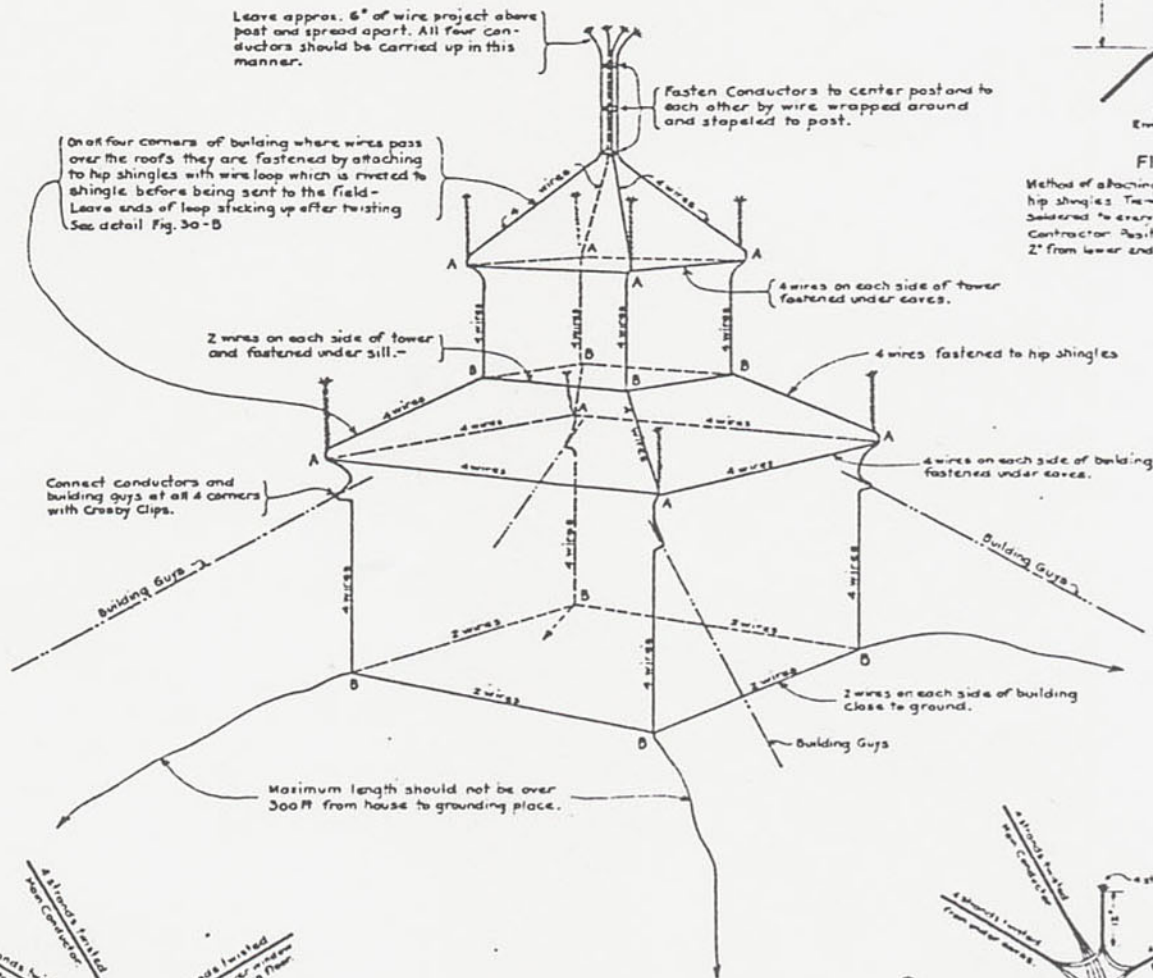
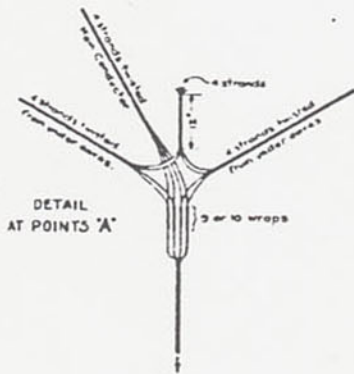


FIG. 30-B

Method of attaching lightning conductor to hip shingles. There to be riveted and soldered to every other shingle by Contractor. Position of rivet hole at 2" from lower end of shingle.

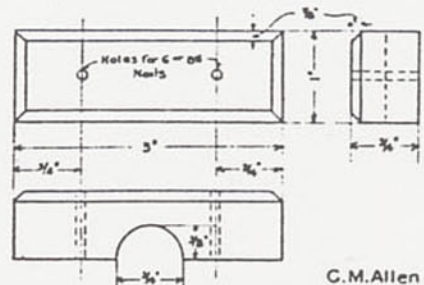


PERSPECTIVE VIEW
OF LIGHTNING CONDUCTORS
FIG. 30



DETAIL AT POINTS 'A'

DETAIL OF BLOCK FOR FASTENING CONDUCTOR
FIG. 30-A



Notes:-

Twist all strands with nail after conductors are in place so that all wires are in close contact with each other. This should be thoroughly done on all sides.

Ground is made by coiling approx. 30 or 40 ft. of end of 4 strand conductor and covering with charcoal or coke in case of rock ground. For ground in soil bury coil and cover with charcoal or coke.

A weed stove is not recommended. If such is used in house a galvanized roof jack should be used and should be bonded securely to conductor with not less than four strands of #5 iron wire, twisted.

BILL OF MATERIAL

Main down conductors		
16 pieces #5 iron wire	370 ft. long	5920 ft.
Horizontal conductor around tower under lower window		
16 pieces #5 iron wire	9 ft. long	144 ft.
Horizontal conductor around Main floor roof under eaves		
8 pieces #5 iron wire	9 ft. long	72 ft.
Horizontal conductor around bottom of Main Floor.		
16 pieces #5 iron wire	16 ft. long	256 ft.
8 pieces #5 iron wire	16 ft. long	128 ft.
Total wire		6520 ft.

- 100 - Cleats for fastening conductors
- 4 - 3/8" Galv Crosby Clips
- 8 - Sacks Charcoal or Coke

C.M. Allen
-Portland, Ore.
Jan 6-1922-C.F.H.

READY CUT LOOKOUT HOUSE

Full Size Detail of Shutter fastenings

For Use of Above See Sheet No. G for lower floor, and Sheet No. H for Tower.

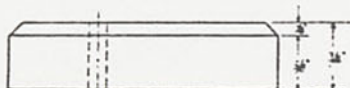
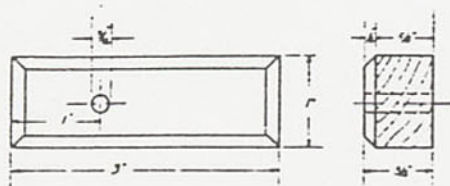
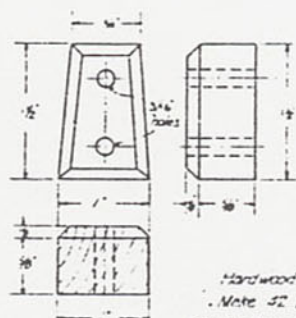
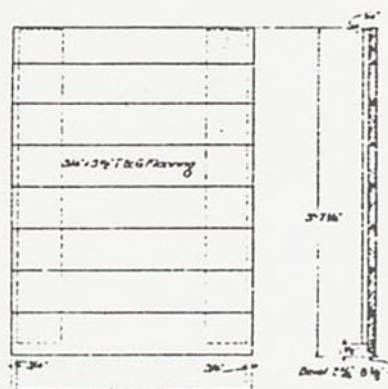


Fig. 31 Full Size Detail of Button
Make 90 for Each house which allows
6 Extras

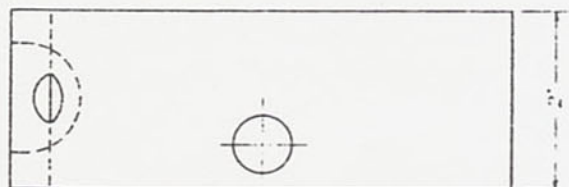


Hardwood Block to be used with Buttons
Make 52 blocks for each house
which allows 4 Extras
This type of block used on lower floors only.

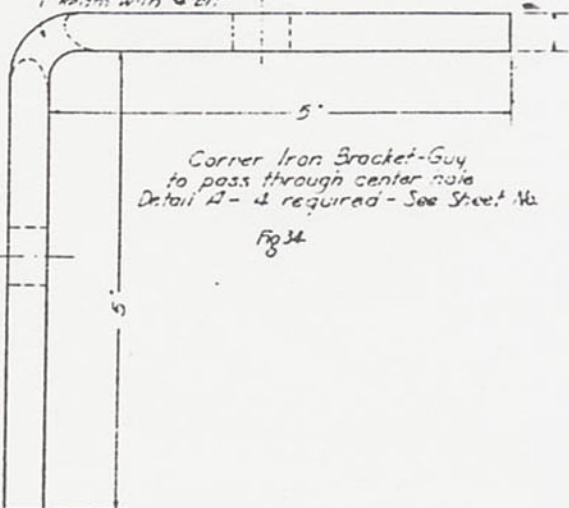
Fig. 30



Make 7 Shutters 2' x 16" wide
8 " 2' x 12"
Fig. 32 Lower Floor Shutters



1/2 Hole
in Corner with 1/4" bit



Corner Iron Bracket-Guy
to pass through center hole
Detail A - 4 required - See Sheet No.

Fig. 34

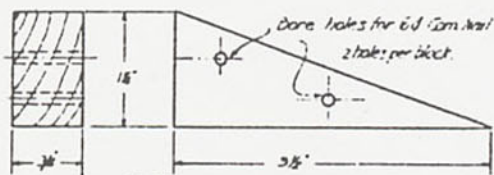
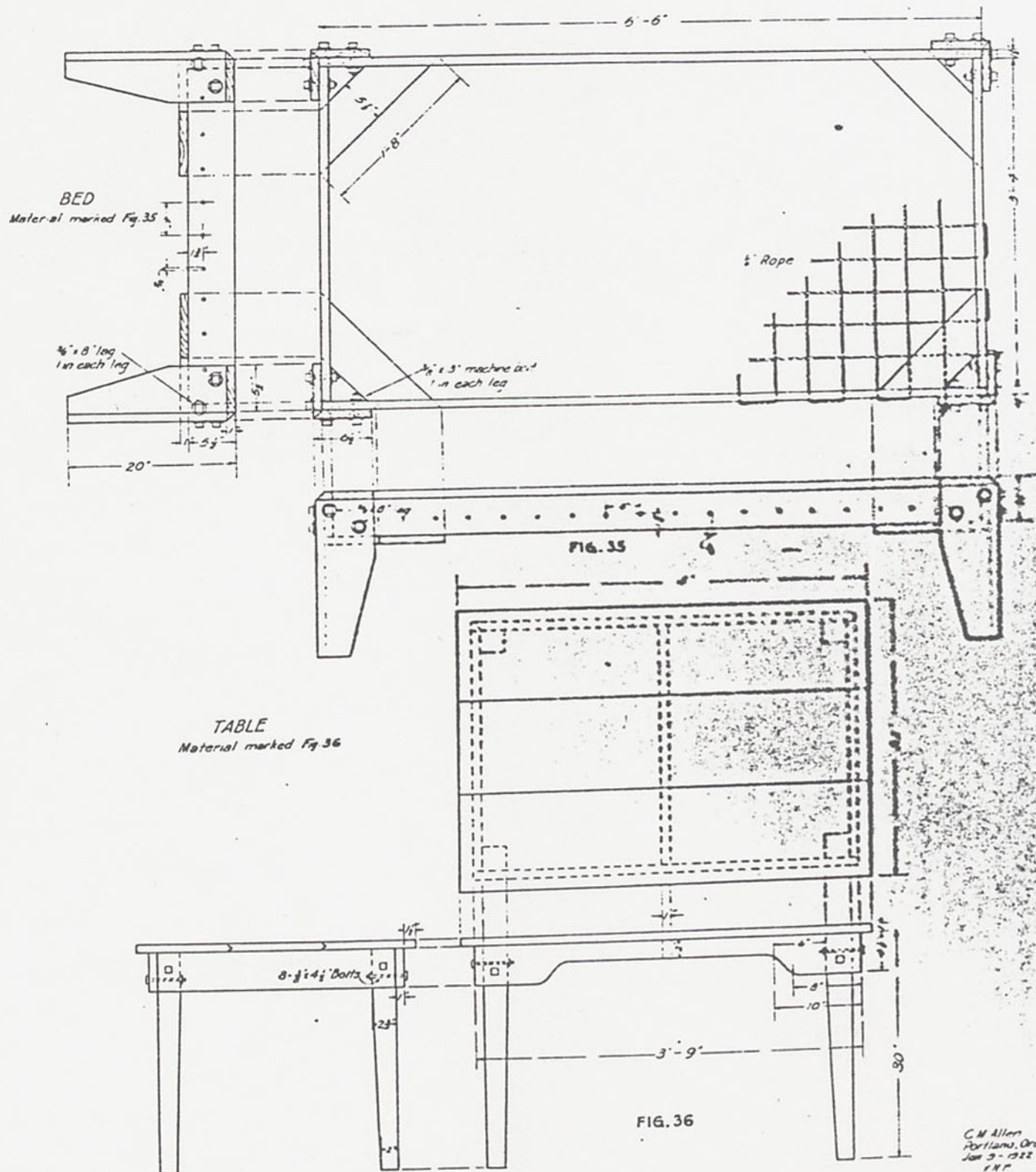


Fig. 33

Hardwood block fits under window sill and on top of headers.
This block supports sill and determines its pitch and requires
the top of all headers to be the same elevation.
Nail block on each side of posts except at doorway.
Make 35 blocks which allows 5 Extras
For position of this block See Sheet No. block under sill, lower floor.

U.S. DEPT. OF AGRICULTURE
FOREST SERVICE
District 6

READY CUT LOOKOUT HOUSE



C. M. Allen
Portland, Ore
Jan 3 - 1922
1 N P