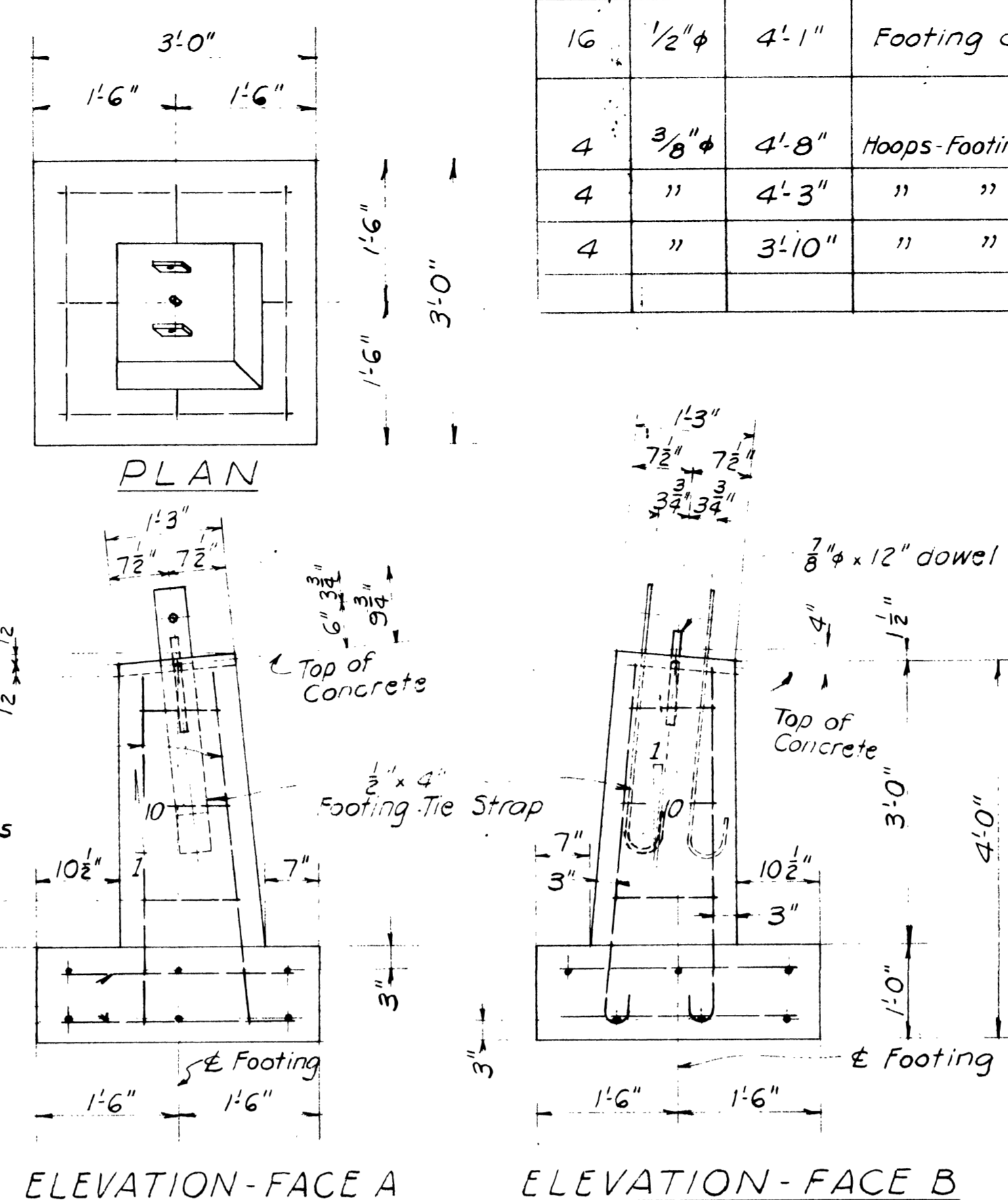


PLAN VIEW OF HOUSE & CATWALK SILLS  
Scale:  $\frac{1}{2}'' = 1'-0''$

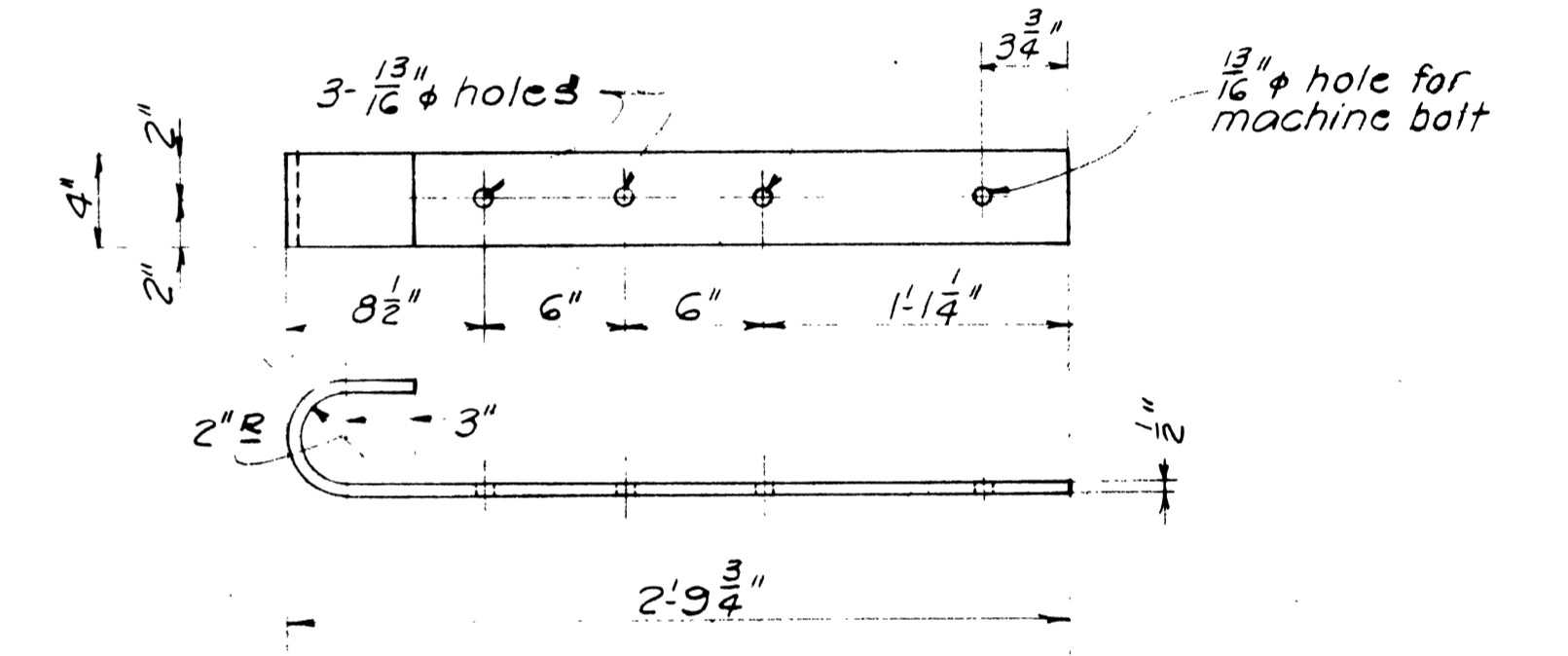


TOWER FOOTING DETAILS  
a Required  
Scale:  $\frac{3}{4}'' = 1'-0''$   
Approx. 0.55 cu yds. 1:2:4 concrete in each footing

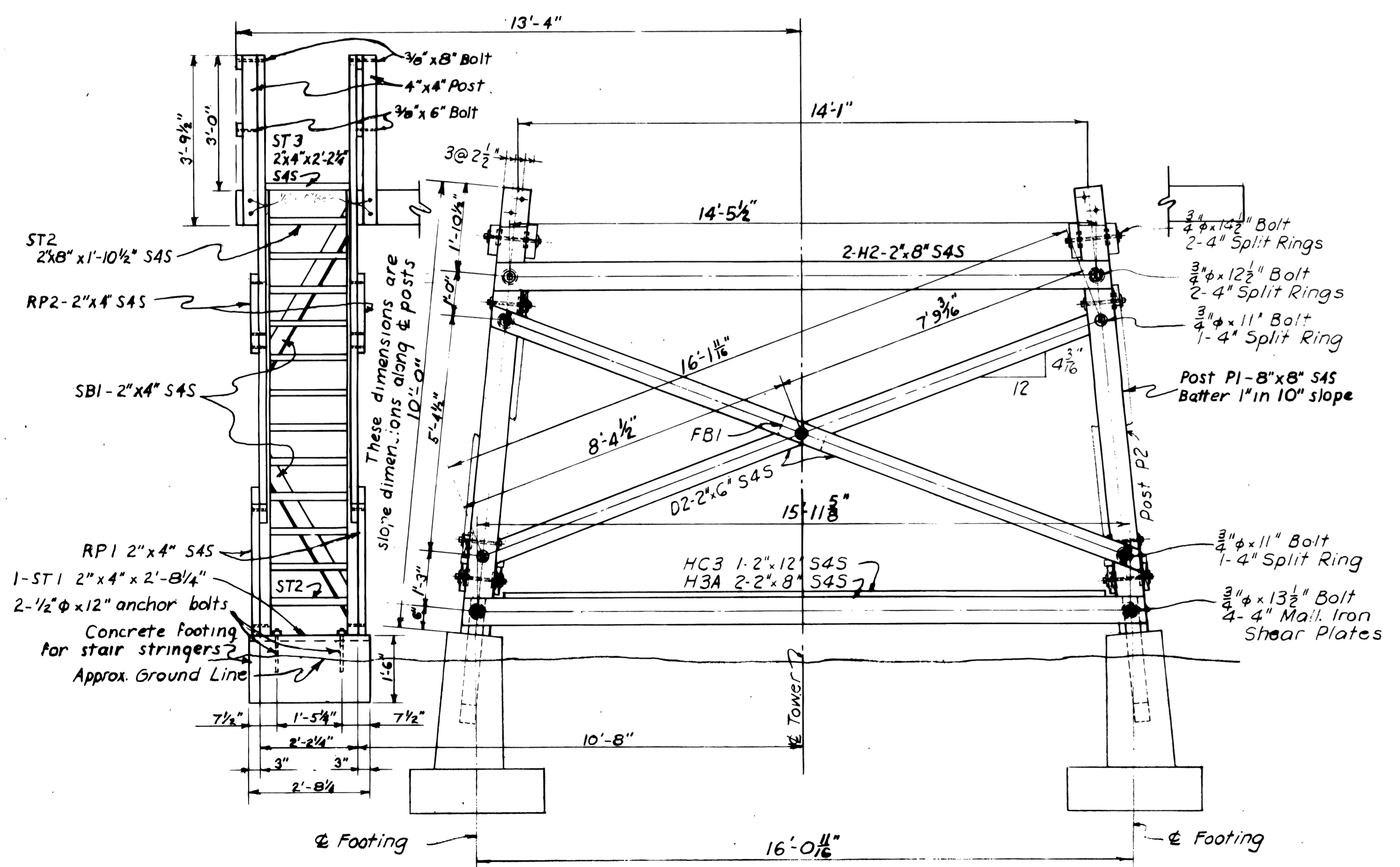
BILL OF REINFORCING STEEL					
No.	SIZE	LENGTH	LOCATION	BENDING DETAILS	WEIGHT
48	1/2" φ	2'-6"	Footing slab	Straight	80
16	1/2" φ	4'-1"	Footing column		44
4	3/8" φ	4'-8"	Hoops - footing column		7
4	"	4'-3"	"	1'-0 1/2"	6.4
4	"	3'-10"	"	10"	5.8
Total					143.2

BILL OF HARDWARE *					
No.	SIZE	LENGTH	DESCRIPTION	LOCATION	WEIGHT
5	3/4" φ	14 1/2"	Machine bolts	H1's to posts	11
9	"	14"	"	Posts to cab sills	19
5	"	13 1/2"	"	H3's to posts	10 1/2
13	"	12 1/2"	"	H2's & H3's to posts. Diags.	25
18	"	11"	"	Diagonals to posts	32
100	3/4" φ	-	Mall. C.I. Washers	3/4" Machine bolts	33
1	1/2" φ	31"	Machine bolt	Stairs (@ RP2's)	2
1	"	27 1/2"	"	Stairs (@ bottom)	1 1/2
2	"	12"	J-Bolts	ST1 to stair footing	1 1/2
7	1/2" φ	-	Mall. C.I. Washers	1/2" Mach & J-Bolts	1
3	3/8" φ	5"	Carriage bolts	RP1 to stair strings	1
5	3/8" φ	4"	"	Handrails to railposts	1
8	3/8" φ	-	Cut washers	3/8" Carriage bolts	1 1/2
5	7/8" φ	12"	Dowels	Posts to footings	10
44	4"	-	Split rings	Horiz. & diags. to posts	33 1/2
18	4"	-	M.I. Shear plates	Bottom hor. to tie strap to posts	16 1/2
11 lbs	60 d	-	Common wire nails	H3's to H3's	11
2 lbs	40 d	-	"	Diagonal intersections	2
16 lbs	20 d	-	"	Treads & house sills	16
8	1/2" x 4"	3'-6"	Footing tie straps	See detail.	190
Total					418 lbs

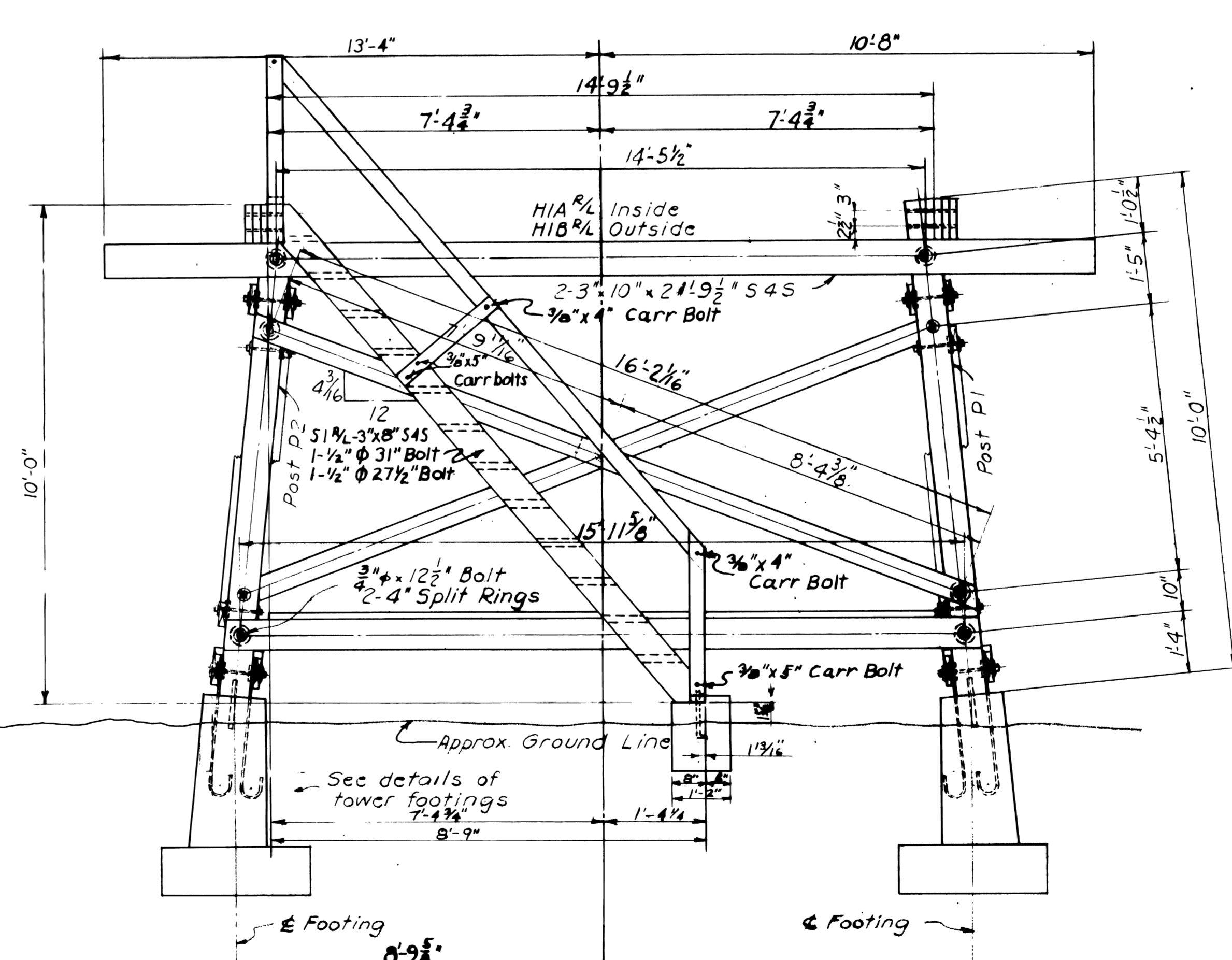
\* All hardware to be galvanized.



FOOTING TIE STRAP  
Make 8<sub>1</sub> galvanized, from 1/2" x 4" strap  
Scale:  $\frac{1}{2}'' = 1'-0''$



ELEVATION - FACE A  
Scale:  $\frac{1}{2}'' = 1'-0''$



ELEVATION - FACE B  
Scale:  $\frac{1}{2}'' = 1'-0''$

NOTE:  
Location of stairs may be changed from that shown on this drawing. See drawing B-4303 for location of stairs.

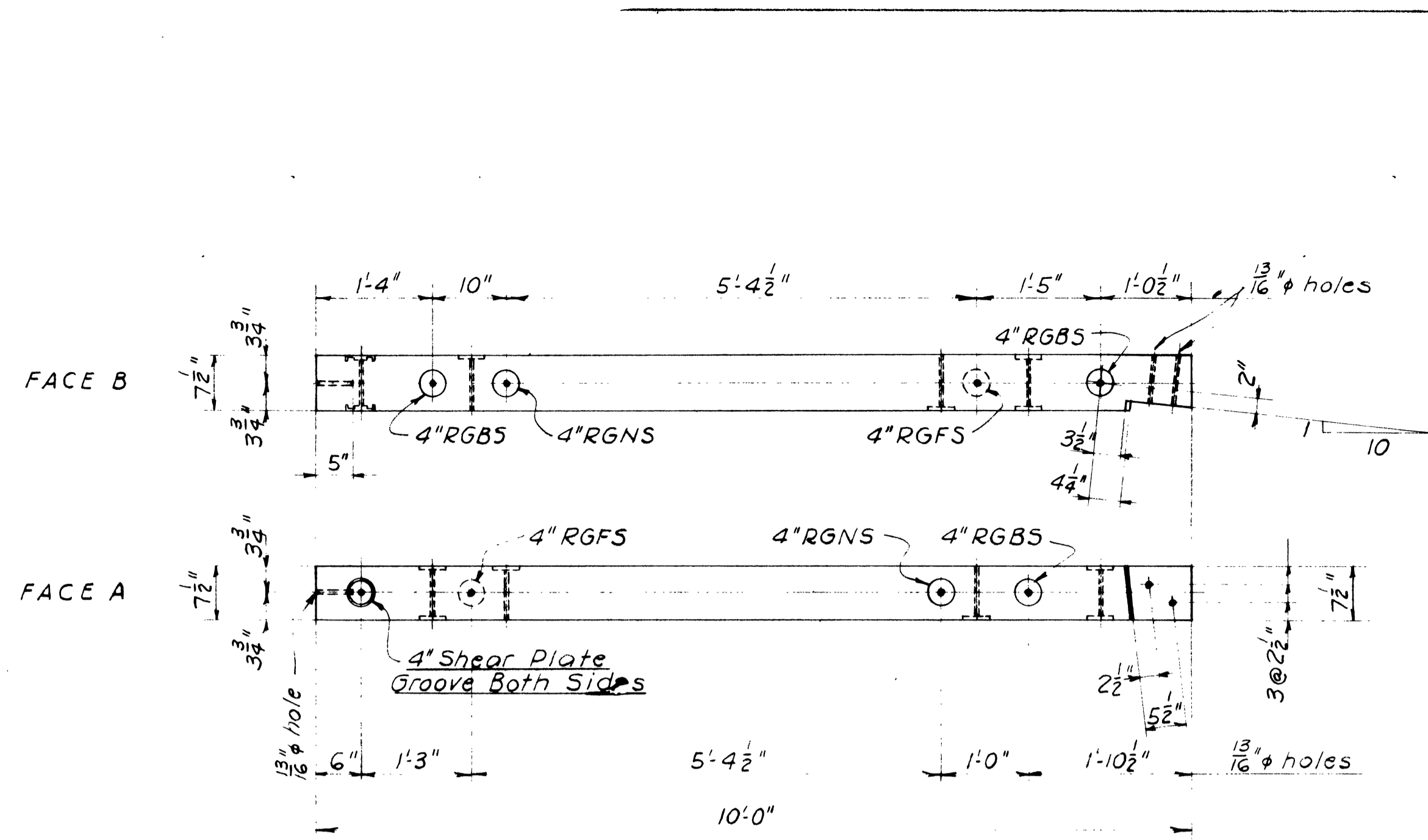
Revised 6-13-42 by W.G.  
Revised 3-25-42 by W.G.

U. S. DEPARTMENT OF AGRICULTURE  
FOREST SERVICE

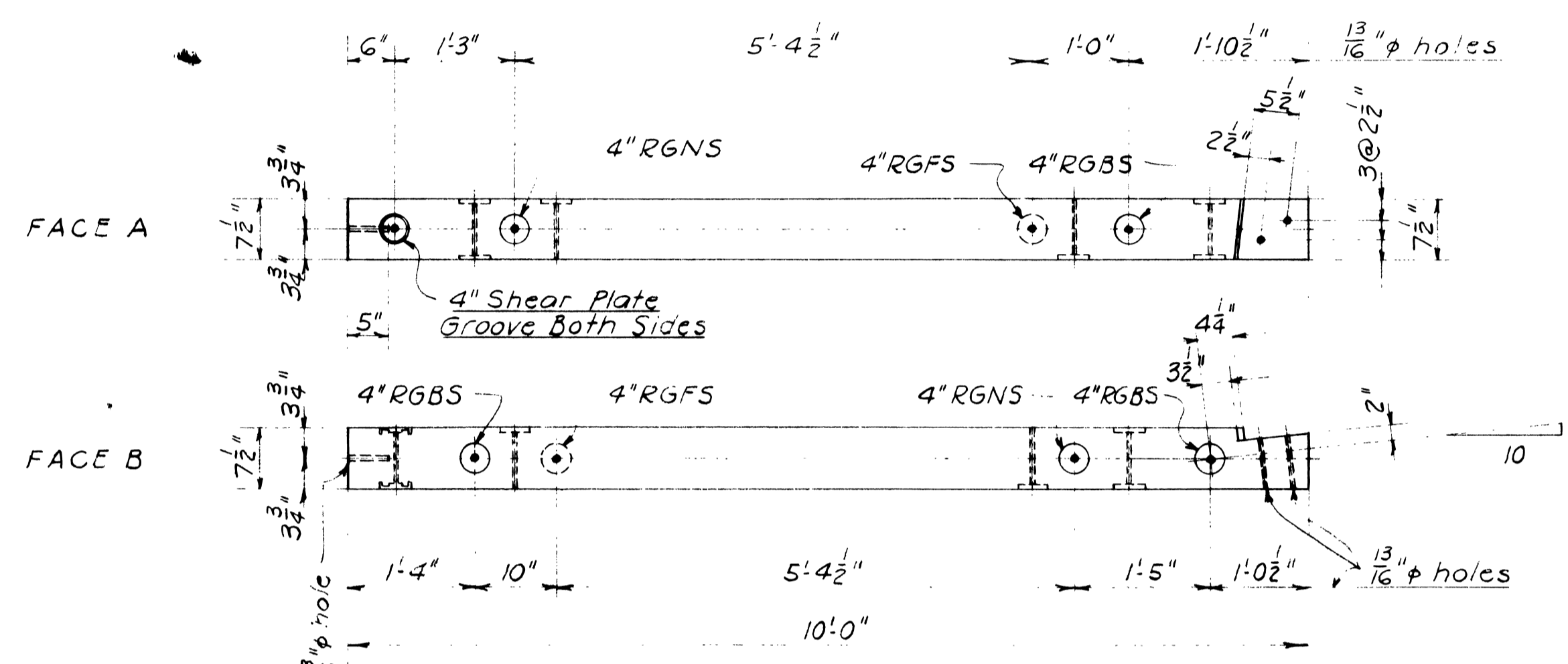
REGION SIX JAMES FRANKLAND, REGIONAL ENGINEER

STANDARD LOOKOUT TOWER  
10 FOOT TYPE CT-6  
GENERAL DETAILS  
REVISED FOR HOUSE B-4303

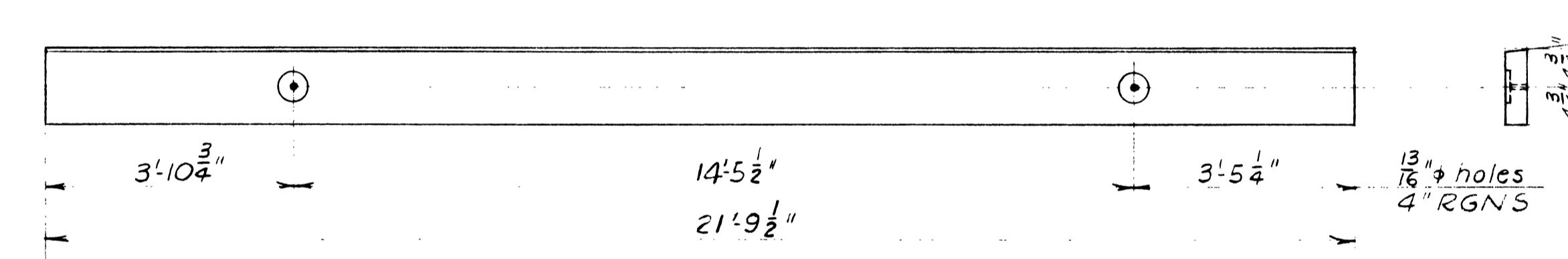
DESIGNED W.G. DRAWN W.G. TRACED  
SCALE AS NOTED CHECKED  
APPROVED DATE DEC 22, 1941  
ASSISTANT REGIONAL FORESTER



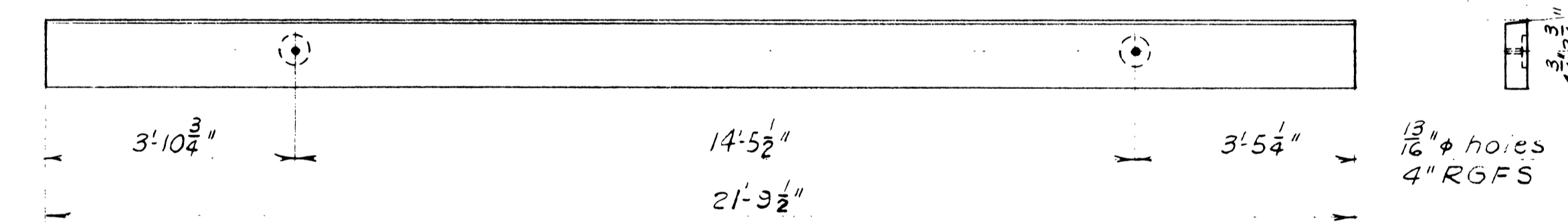
**POST P1**  
Make 2 - 8" x 8" x 10'0" S4S



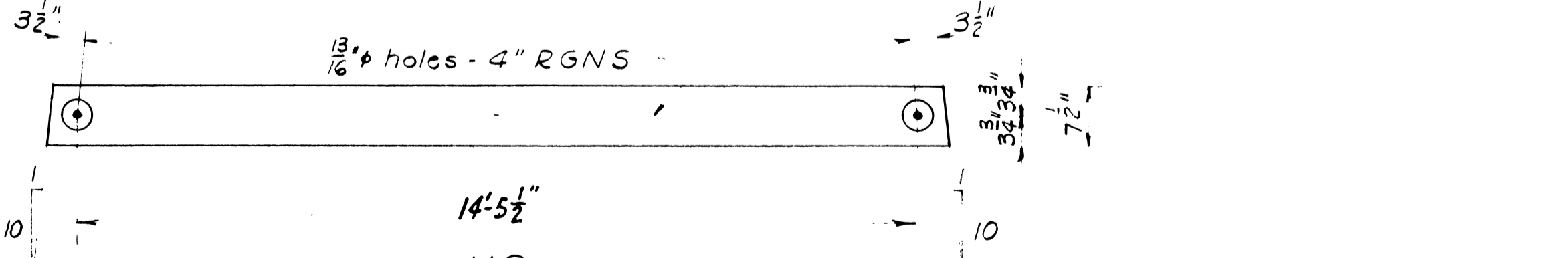
**POST P2**  
Make 2 - 8" x 8" x 10'0" S4S



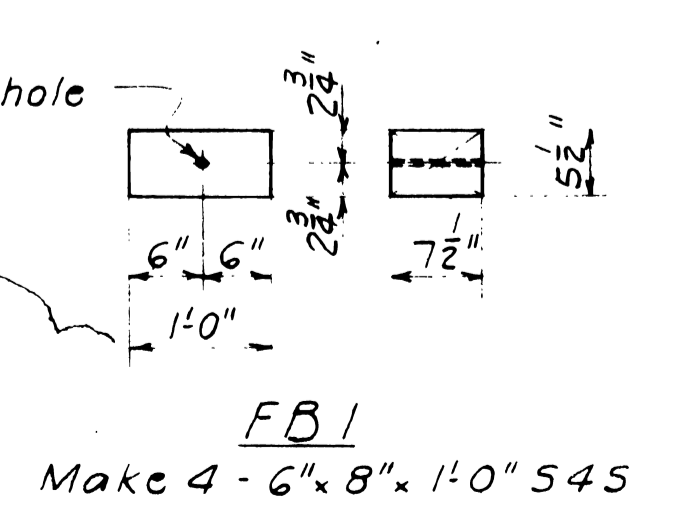
**H1A<sup>R/L</sup> - INSIDE FACES**  
Make 1 - H1A<sup>R</sup> - 3" x 10" x 21'9 1/2" S4S As Shown  
Make 1 - H1A<sup>L</sup> - " " " " With Hole & Ring Layout Interchanged



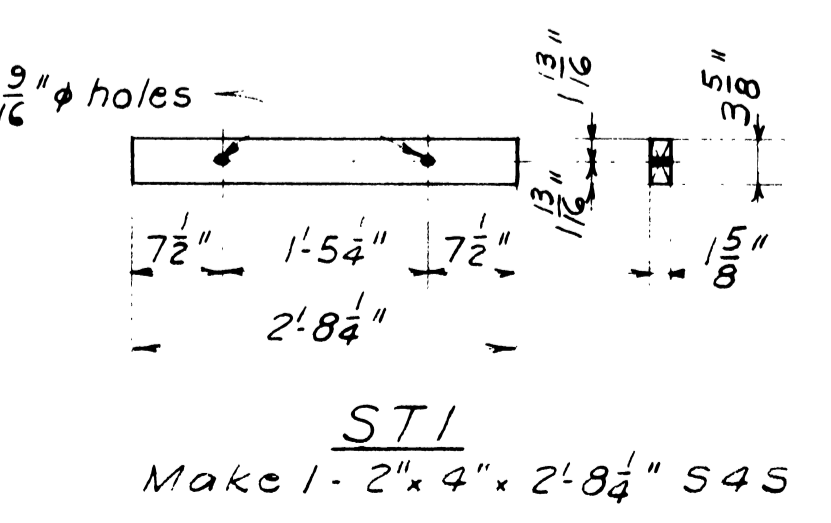
**H1B<sup>R/L</sup> - OUTSIDE FACES**  
Make 1 - H1B<sup>R</sup> - 3" x 10" x 21'9 1/2" S4S As Shown  
Make 1 - H1B<sup>L</sup> - " " " " With Hole & Ring Layout Interchanged



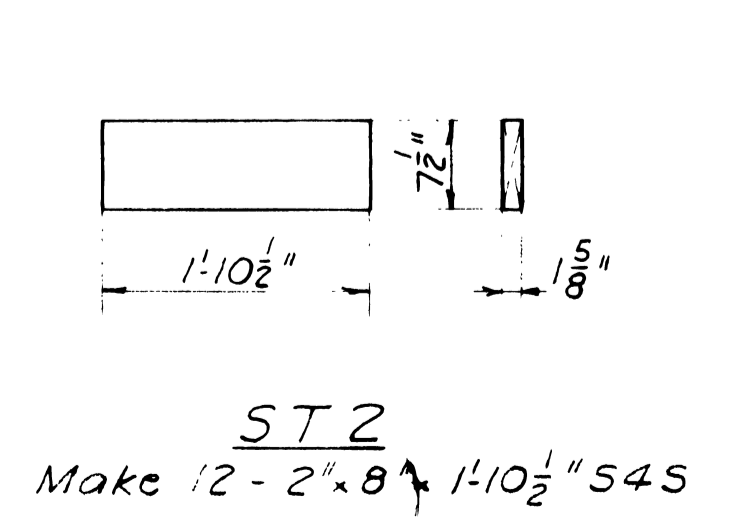
**H2**  
Make 4 - 2" x 8" x 15' 1 1/8" S4S



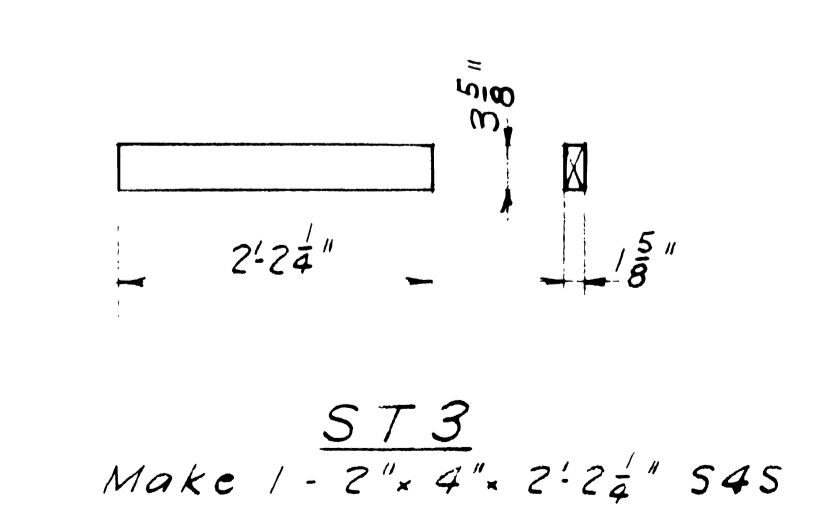
**FBI**  
Make 4 - 6" x 8" x 1'0" S4S



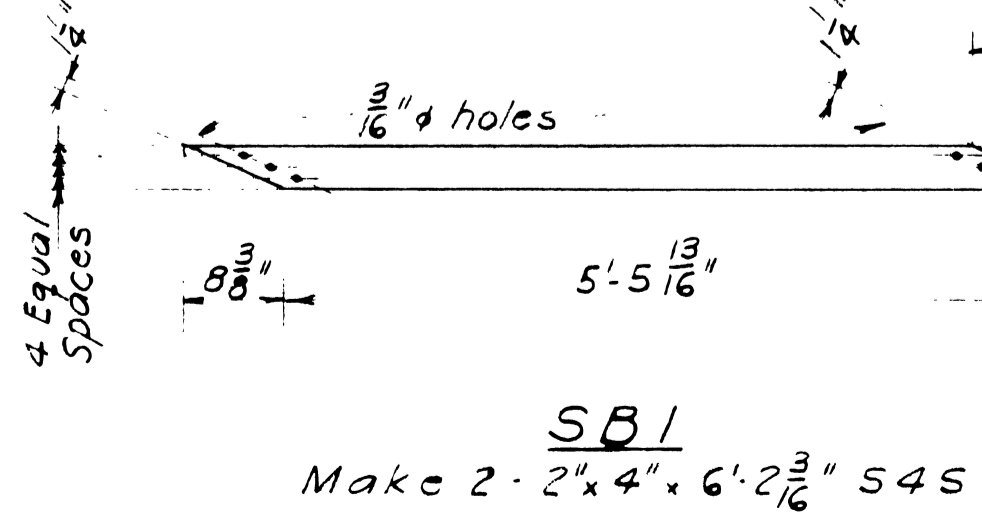
**ST1**  
Make 1 - 2" x 4" x 2'8 3/4" S4S



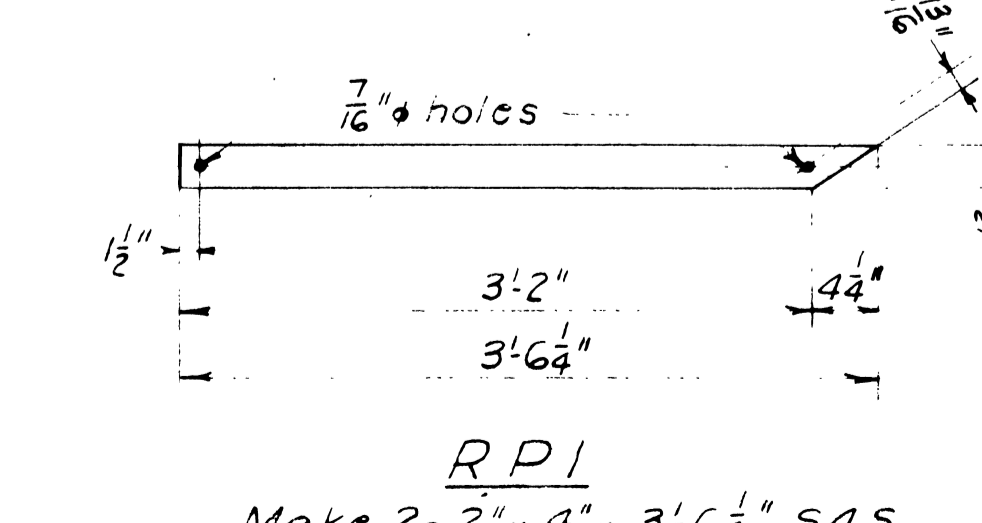
**ST2**  
Make 12 - 2" x 8" x 1'10 1/2" S4S



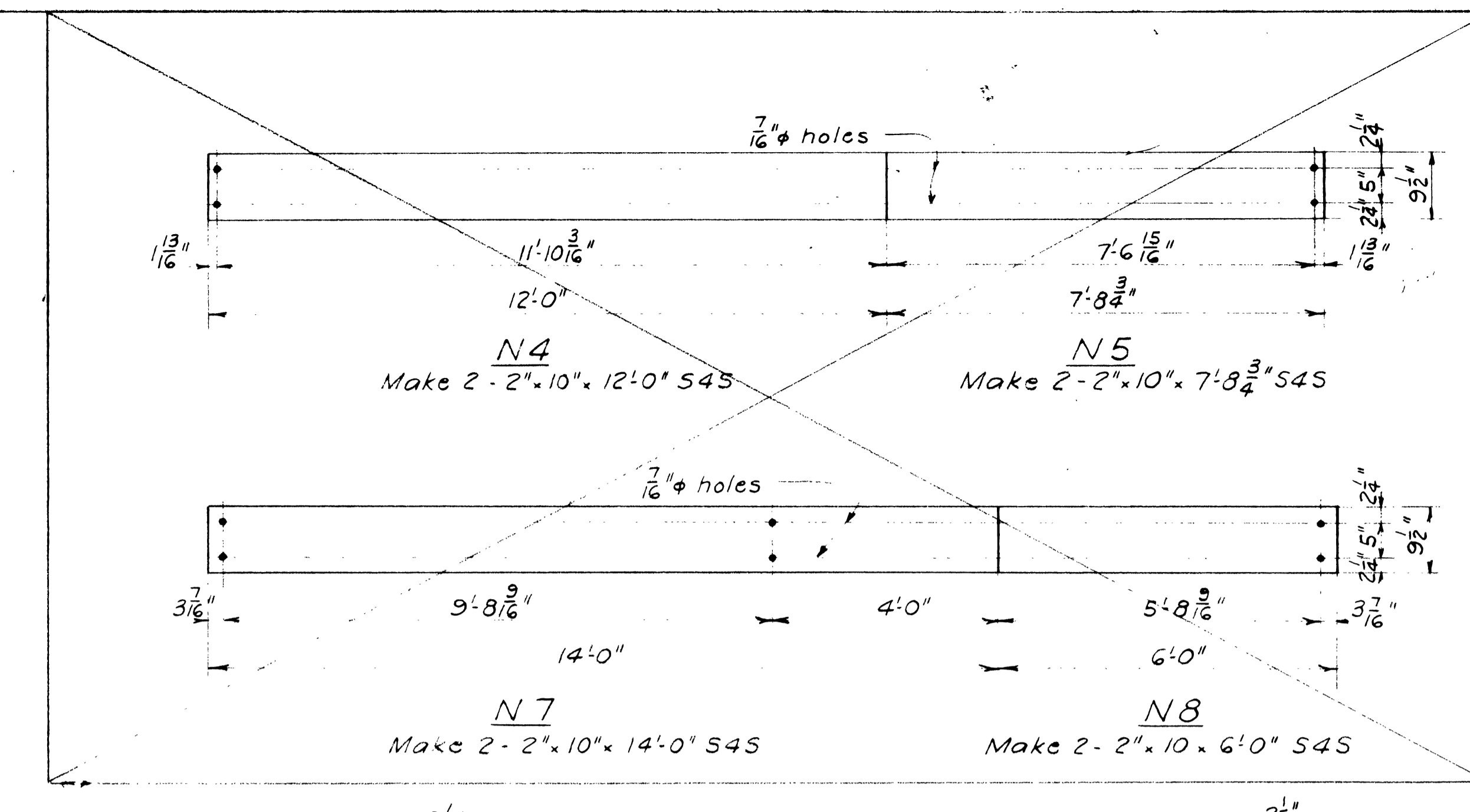
**ST3**  
Make 1 - 2" x 4" x 2'2 3/4" S4S



**SBI**  
Make 2 - 2" x 4" x 6'2 3/8" S4S



**RP1**  
Make 2 - 2" x 4" x 3'6 3/4" S4S

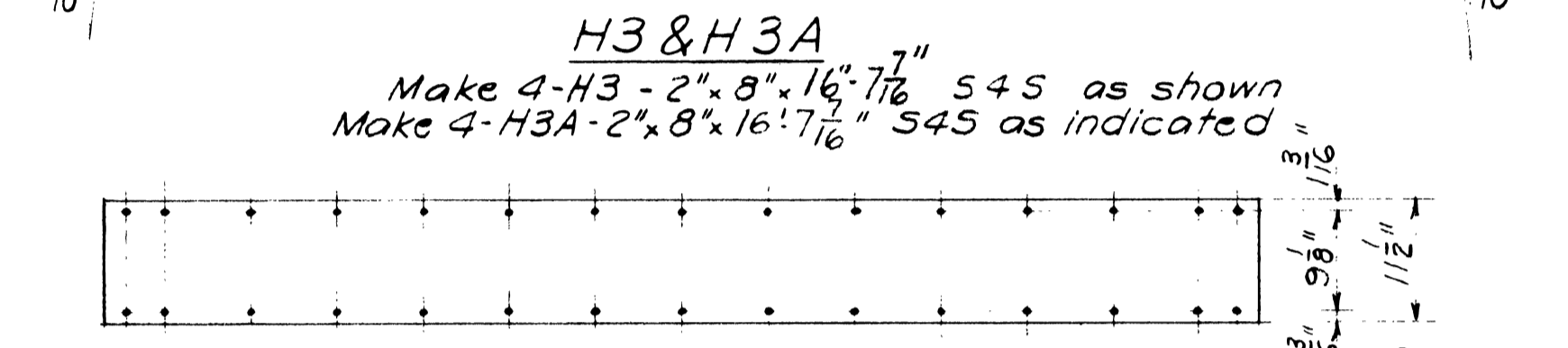


**N4**  
Make 2 - 2" x 10" x 12'0" S4S

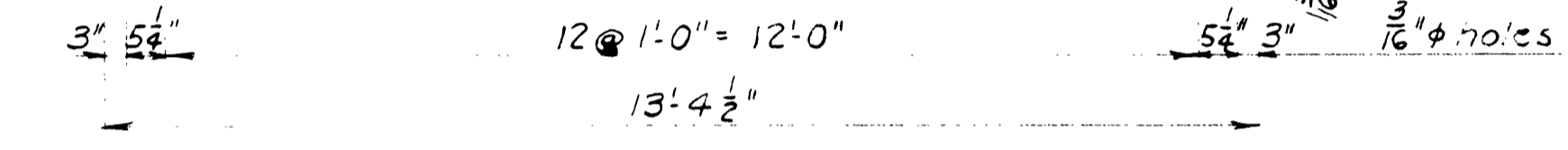
**N5**  
Make 2 - 2" x 10" x 7'8 3/4" S4S

**N7**  
Make 2 - 2" x 10" x 14'0" S4S

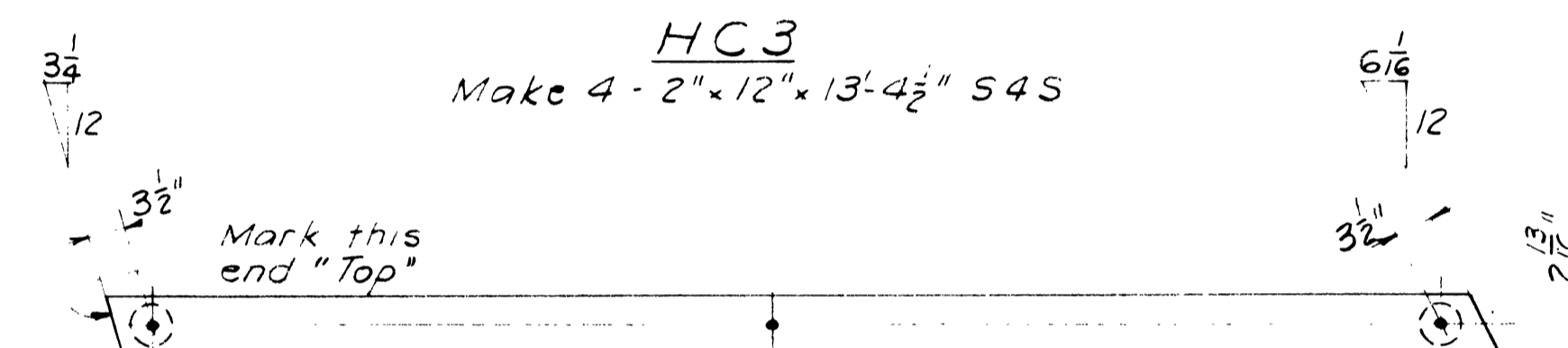
**N8**  
Make 2 - 2" x 10" x 6'0" S4S



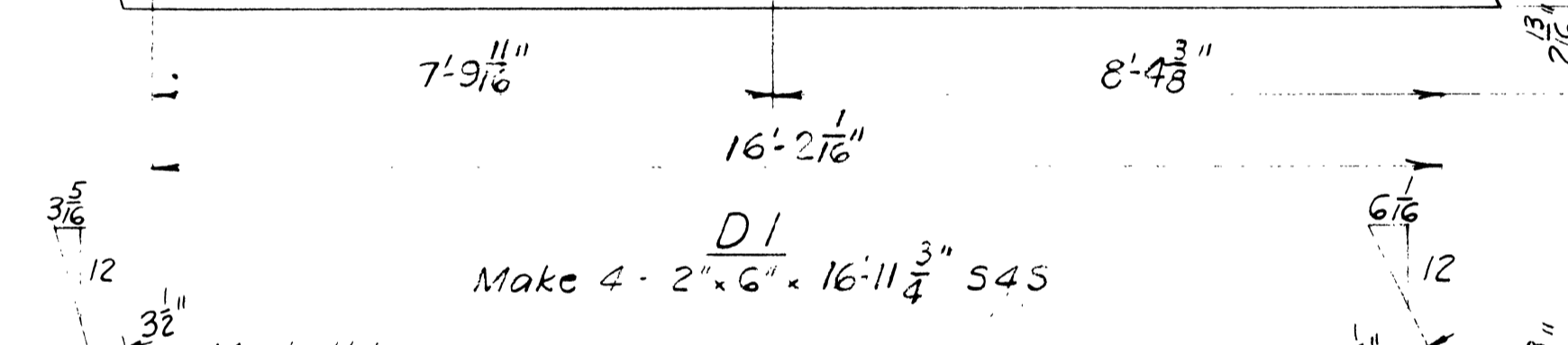
**H3 & H3A**  
Make 4 - H3 - 2" x 8" x 16' 7 1/8" S4S as shown  
Make 4 - H3A - 2" x 8" x 16' 7 1/8" S4S as indicated



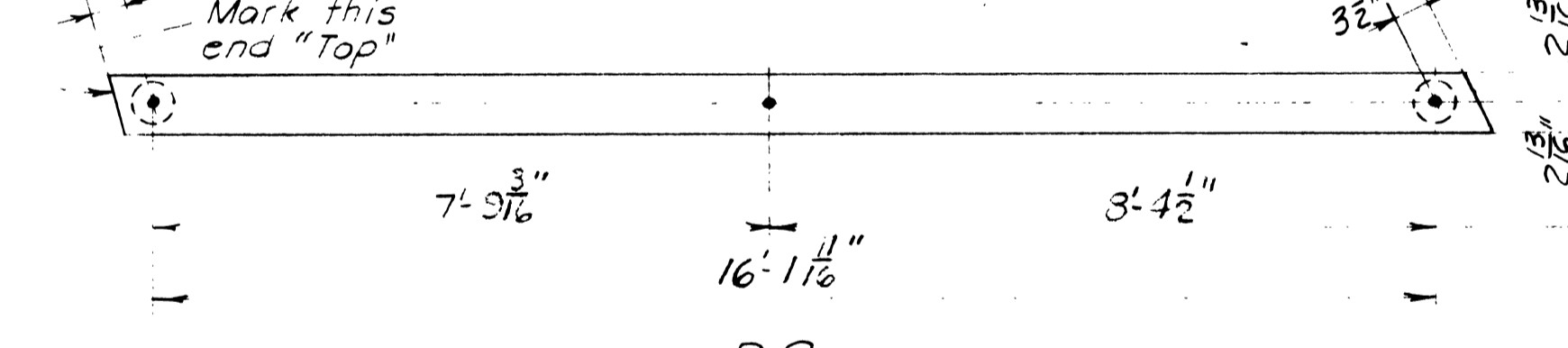
**HC3**  
Make 4 - 2" x 12" x 13'4 1/2" S4S



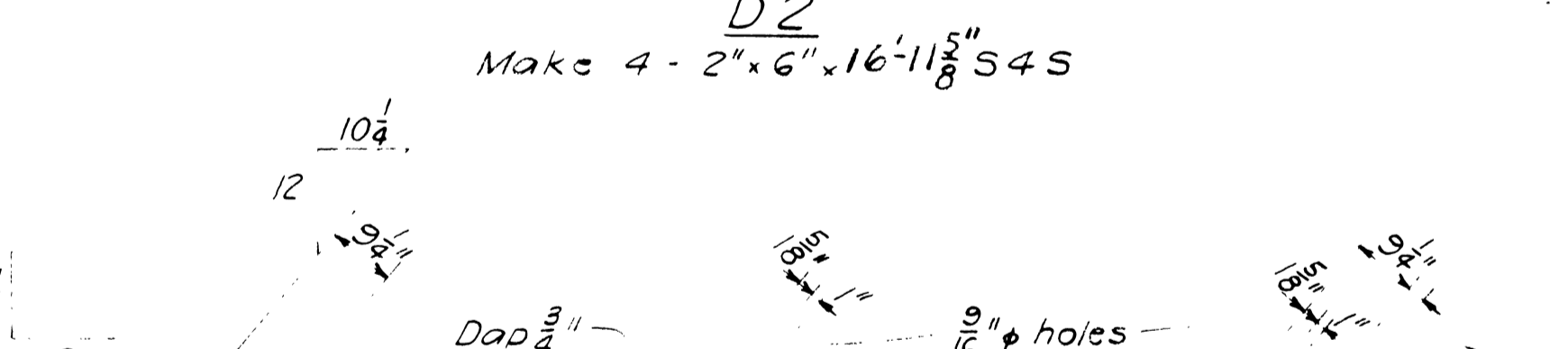
**D1**  
Make 4 - 2" x 6" x 16'11 3/4" S4S



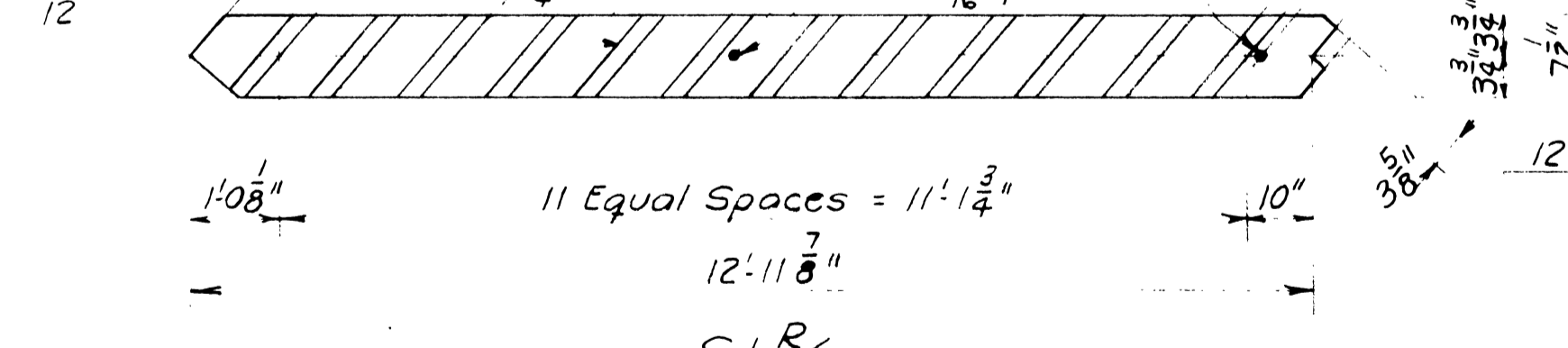
**D2**  
Make 4 - 2" x 6" x 16'11 3/8" S4S



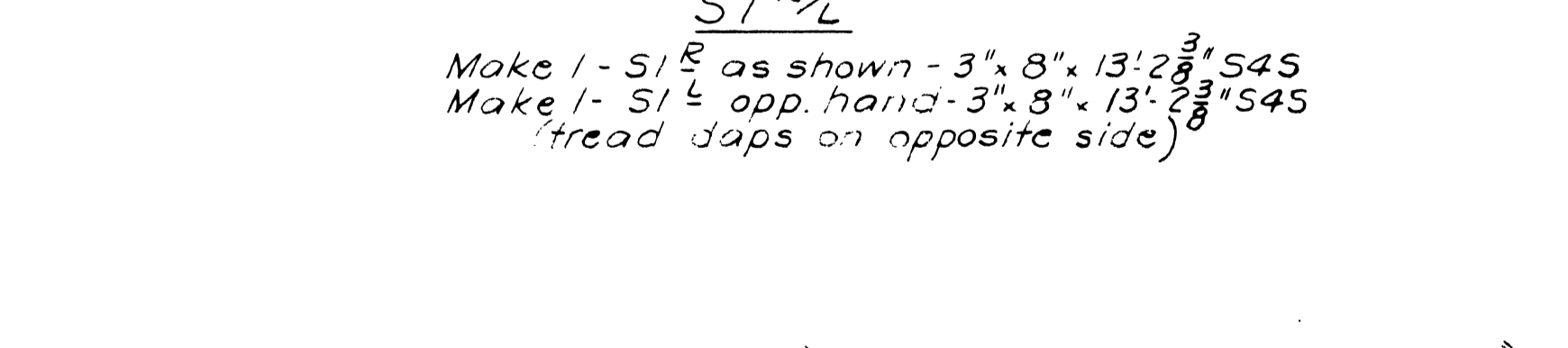
**S1<sup>R/L</sup>**  
Make 1 - S1<sup>R</sup> as shown - 3" x 8" x 13'2 3/8" S4S  
Make 1 - S1<sup>L</sup> opp. hand - 3" x 8" x 13'2 3/8" S4S  
(tread daps on opposite side)



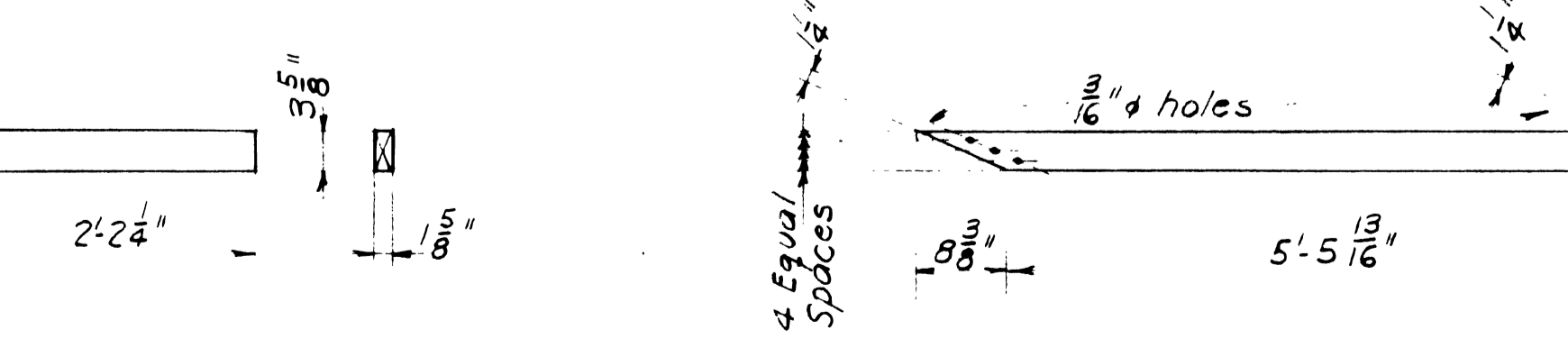
**RP2**  
Make 2 - 2" x 4" x 2'7 1/4" S4S



**SI<sup>R/L</sup>**  
Make 1 - SI<sup>R</sup> as shown - 3" x 8" x 13'2 3/8" S4S  
Make 1 - SI<sup>L</sup> opp. hand - 3" x 8" x 13'2 3/8" S4S  
(tread daps on opposite side)



**RP1**  
Make 2 - 2" x 4" x 3'6 3/4" S4S



**RP1**  
Make 2 - 2" x 4" x 3'6 3/4" S4S

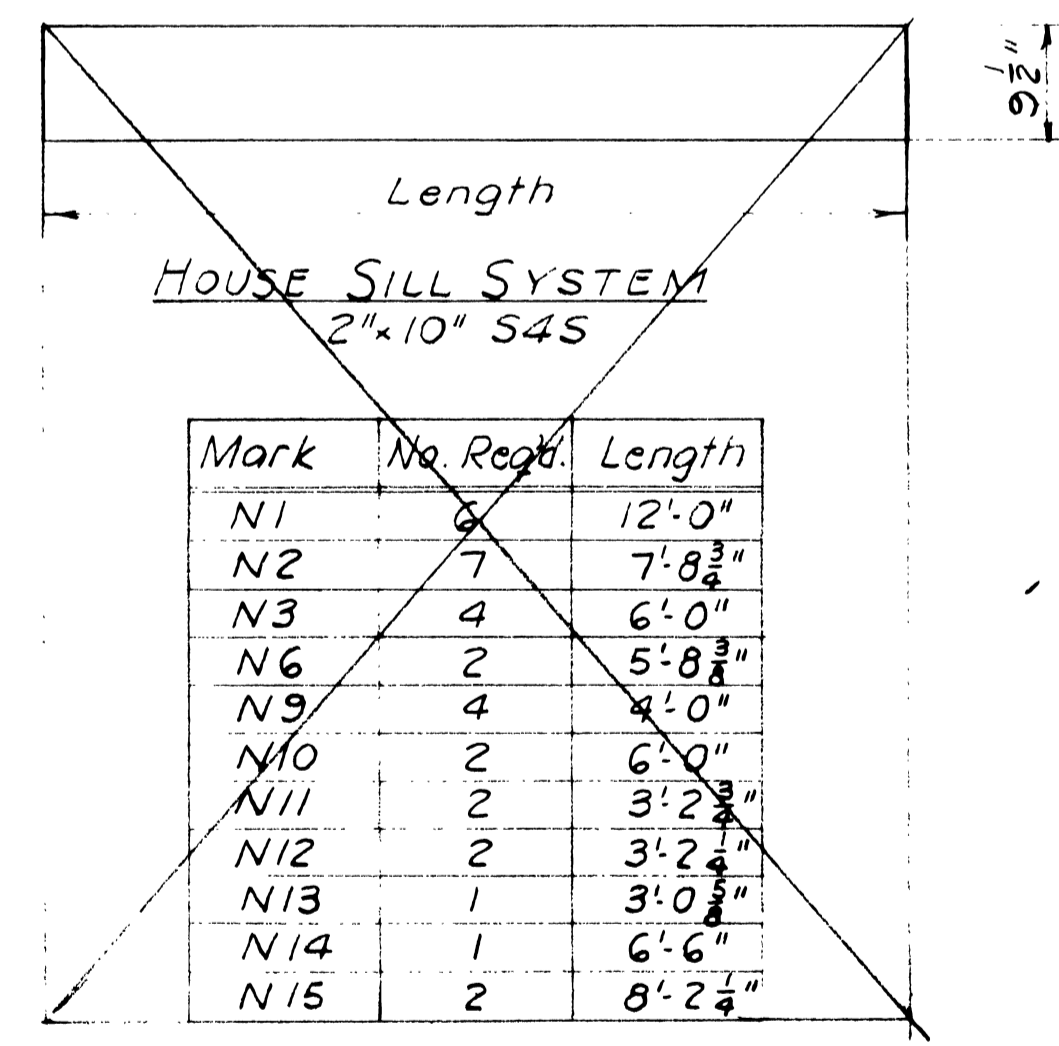
to be furnished by house fabricator

**BILL OF LUMBER**  
**TREATED**

ITEM	NO.	MARK	SIZE	LENGTH	DESCRIPTION	FBM
1	2	P1	8" x 8" S4S	10'-0"	Posts	128
2	2	P2	8" x 8" S4S	10'-0"	"	128
3	2	H1A	3" x 10" S4S	21'9 1/2"	Inside tower girders	109
4	2	H1B	3" x 10" S4S	21'9 1/2"	Outside " "	109
5	4	H2	2" x 8" S4S	15' 1 1/8"	Top horizontals	80
6	8	H3 & H3A	2" x 8" S4S	16' 7 1/8"	Bottom "	177
7	4	HC3	2" x 12" S4S	13'4 1/2"	Cover plates	112
8	4	D1	2" x 6" S4S	16' 11 3/4"	Diagonals	68
9	4	D2	2" x 6" S4S	16' 11 3/8"	"	68
10	4	FBI	6" x 8" S4S	1'0"	Diagonal fillers	16
11	2	S1	3" x 8" S4S	13'2 3/8"	Stair stringers	56
12	1	ST1	2" x 4" S4S	2'8 3/4"	Stair stringer sill	2
13	12	ST2	2" x 8" S4S	1'10 1/2"	Stair treads	32
14	1	ST3	2" x 4" S4S	2'2 3/4"	Top stair tread	2
15	2	RP1	"	3'6 3/4"	Hand rail posts	5
16	2	RP2	"	2'7 1/4"	" " "	4
17	2	SBI	2" x 4" S4S	6'2 3/8"	Stair stringer braces	10
18	6	N1	2" x 10" S4S	12'0"	House sills	120
19	7	N2	"	7'8 3/4"	"	93
20	4	N3	"	6'0"	"	40
21	2	N4	"	12'0"	"	40
22	2	N5	"	7'8 3/4"	"	27
23	2	N6	"	5'8 3/8"	"	20
24	2	N7	"	4'0"	"	47
25	2	N8	"	6'0"	"	20
26	4	N9	"	4'0"	"	27
27	2	N10	"	6'0"	"	20
28	2	N11	"	3'2 3/4"	"	13
29	2	N12	"	3'2 3/4"	"	13
30	1	N13	"	3'0 3/8"	"	7
31	1	N14	"	6'6"	"	12
32	2	N15	2" x 10" S4S	8'2 3/4"	House sills	30
<b>TOTAL</b>						<b>1106</b>

**UNTREATED**

1	2	-	2" x 4" S4S	10'-0"	Hand rails	13
---	---	---	-------------	--------	------------	----



**NOTE**  
4" RGNS = 4" Ring Groove Near Side  
4" RGFS = " " " " Far Side  
4" RGBS = " " " " Both Sides

Revised 4-18-61 by LEM (Bill of Lumber)  
Revised 3-25-42 by W.O.

U.S. DEPARTMENT OF AGRICULTURE  
FOREST SERVICE

REGION SIX JAMES FRANKLAND, REGIONAL ENGINEER

STANDARD LOOKOUT TOWER  
10-FOOT TYPE CT-6  
SHOP DETAILS  
REVISED FOR HOUSE B-4301  
DESIGNED: H.S. DRAWN: H.S. TRACED:  
SCALE: NONE CHECKED:  
APPROVED: DATE: FEB. 6, 1992  
ACT. ASSISTANT REGIONAL FORESTER