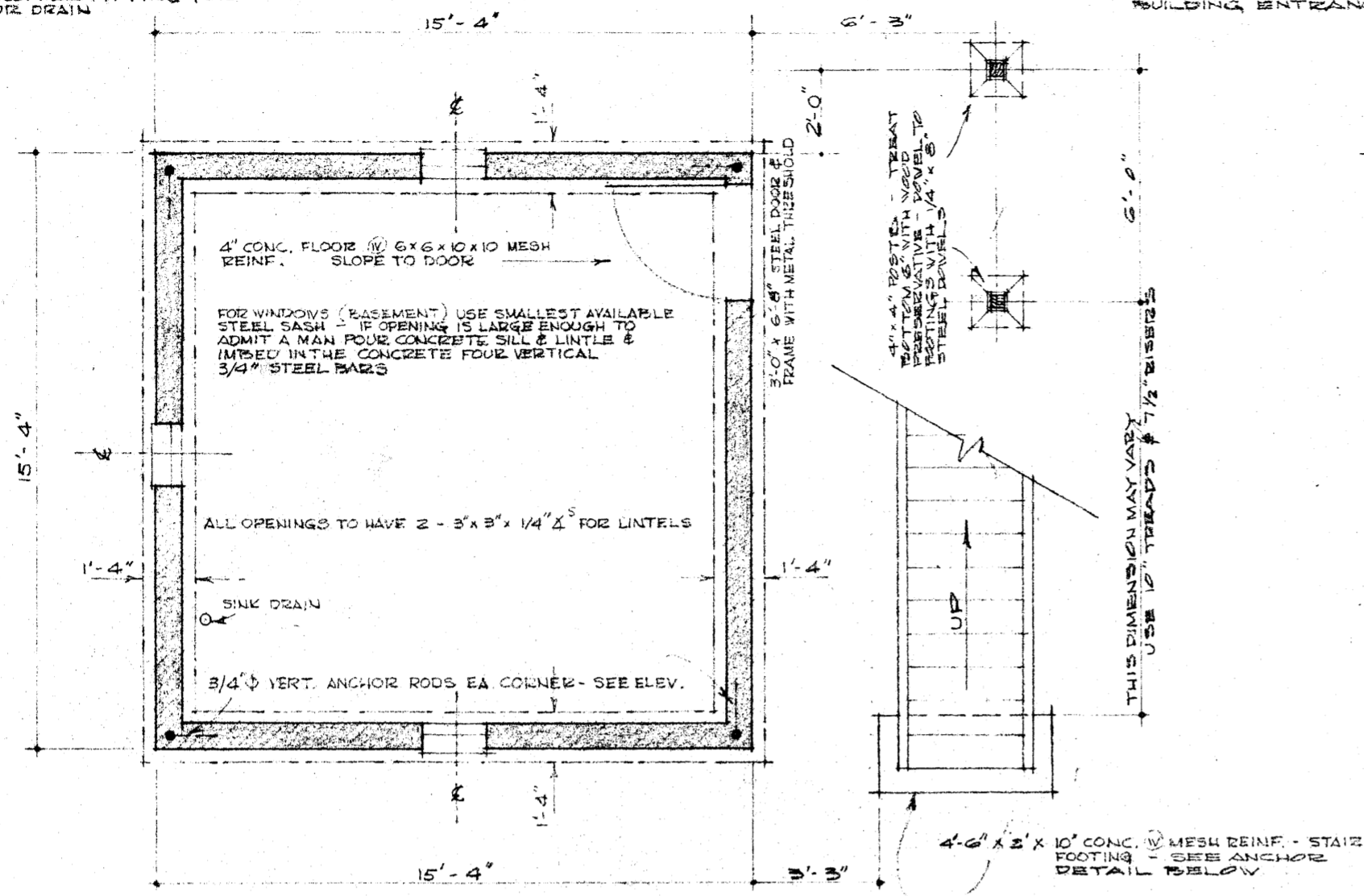
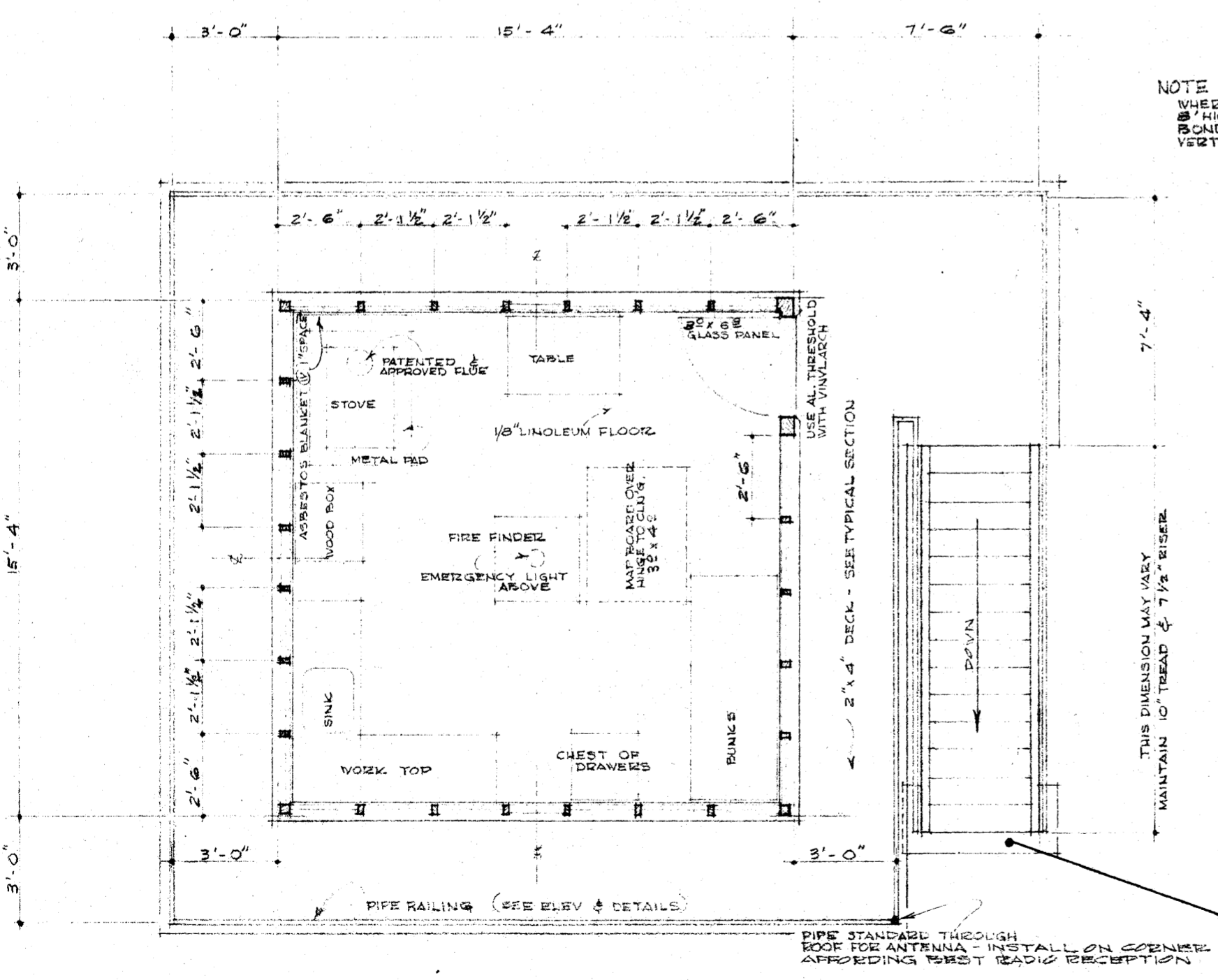


NOTE

FOR SINK DRAIN EXTEND TRAP THRU FLOOR W/ 1/2" GALV. PIPE - DROP TO BASEMENT FLOOR WITH 1/2" PLASTIC PIPE - CONNECT TO COPPER FITTING TO GO THRU CONC. FLOOR & WALL 3' OUTSIDE OF BUILDING - CONNECT MIN. OF 30' 1/2" PLASTIC PIPE TO COPPER FITTING FOR EXTERIOR DRAIN

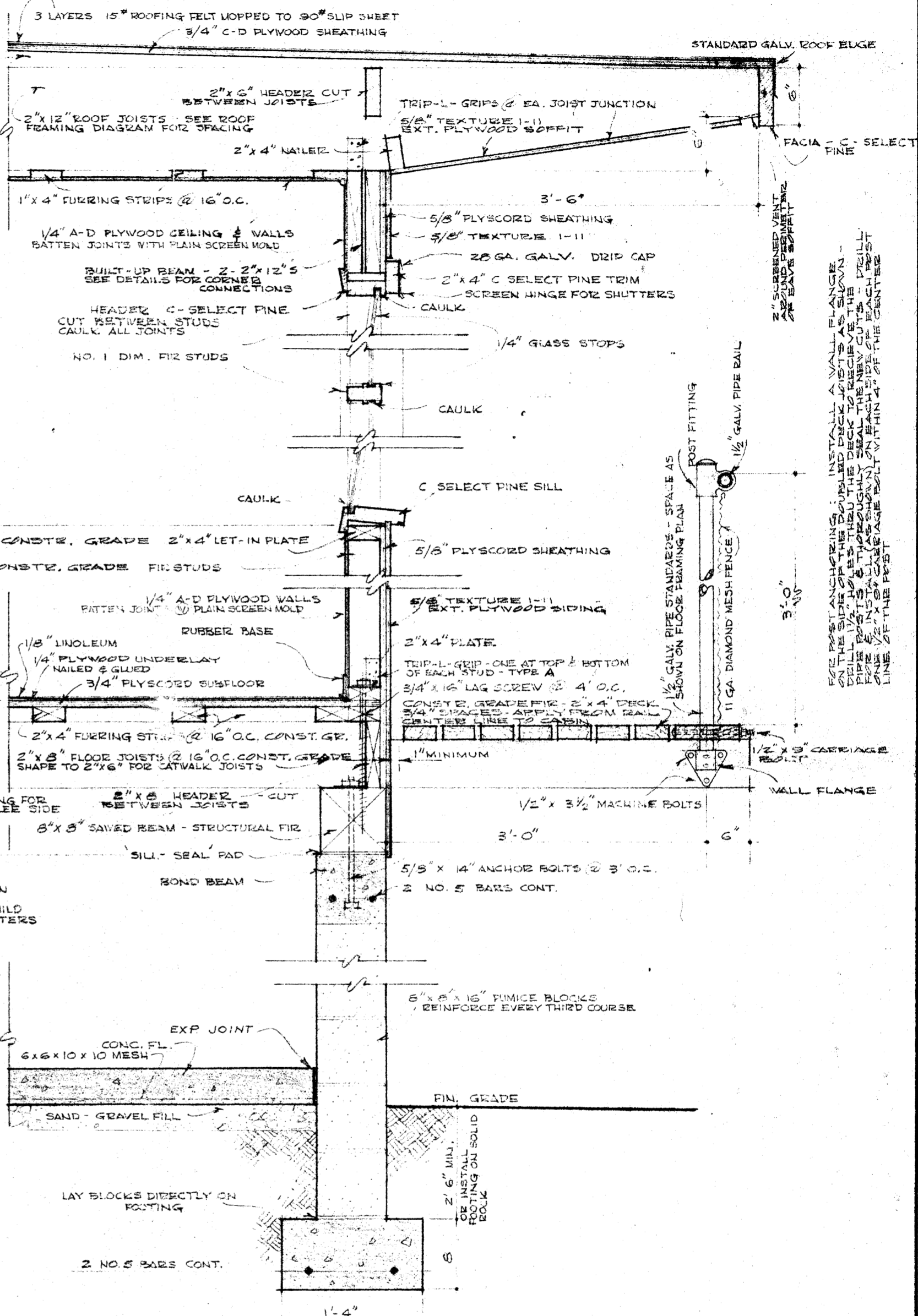


**BASEMENT PLAN**  
SCALE: 1/4" = 1'-0"



**FLOOR PLAN**  
SCALE: 1/4" = 1'-0"

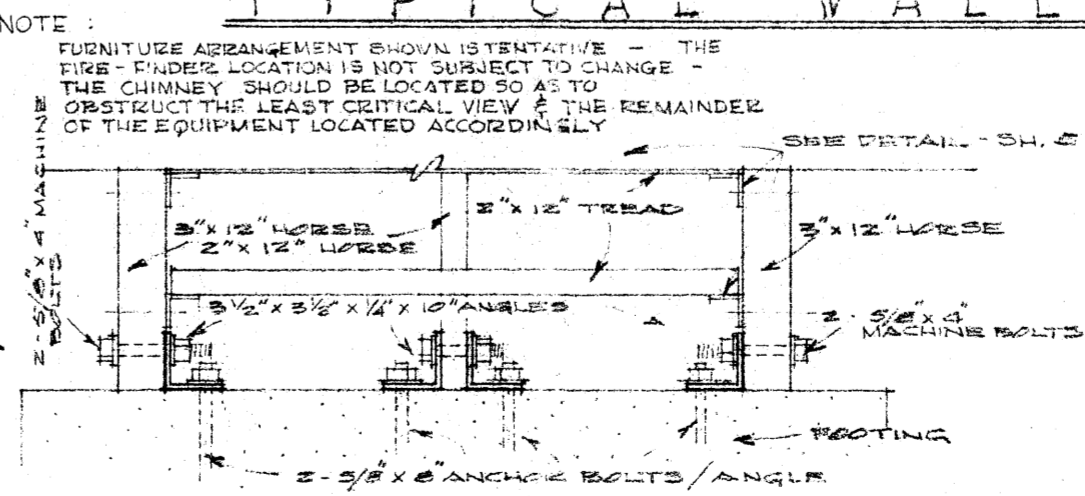
CANT STRIPS - TRIP 2" x 4" x 4" DIAGONALLY & APPLY IN ONE DIRECTION ONLY SO THAT THE GRAPE IS OVER THE BUILDING ENTRANCE



NOTE: ORIENT THE BUILDING FOR ENTRANCE ON THE LEE SIDE

NOTE: WHERE BASEMENT IS MORE THAN 8' HIGH INSTALL ANOTHER REINF. BOND BEAM AT OPENING HT. & BUILD VERTICALLY REINF. CORNER PILASTERS

**TYPICAL WALL SECTION**  
SCALE: 1" = 1'-0"



**STAIR ANCHOR AT FOOTING**  
SCALE: 1" = 1'-0"

U. S. DEPARTMENT OF AGRICULTURE  
**FOREST SERVICE**

REGION FOUR H.M. BUCKLEY REGIONAL ENGINEER

**LOOKOUT HOUSE**  
REVISED FROM R-6 FLAT-TOP LOOKOUT PLANS AS DESIGNED BY & FROM R-4 SMITH KNOB LOOKOUT PLANS

REVISOR: R.O. Gile

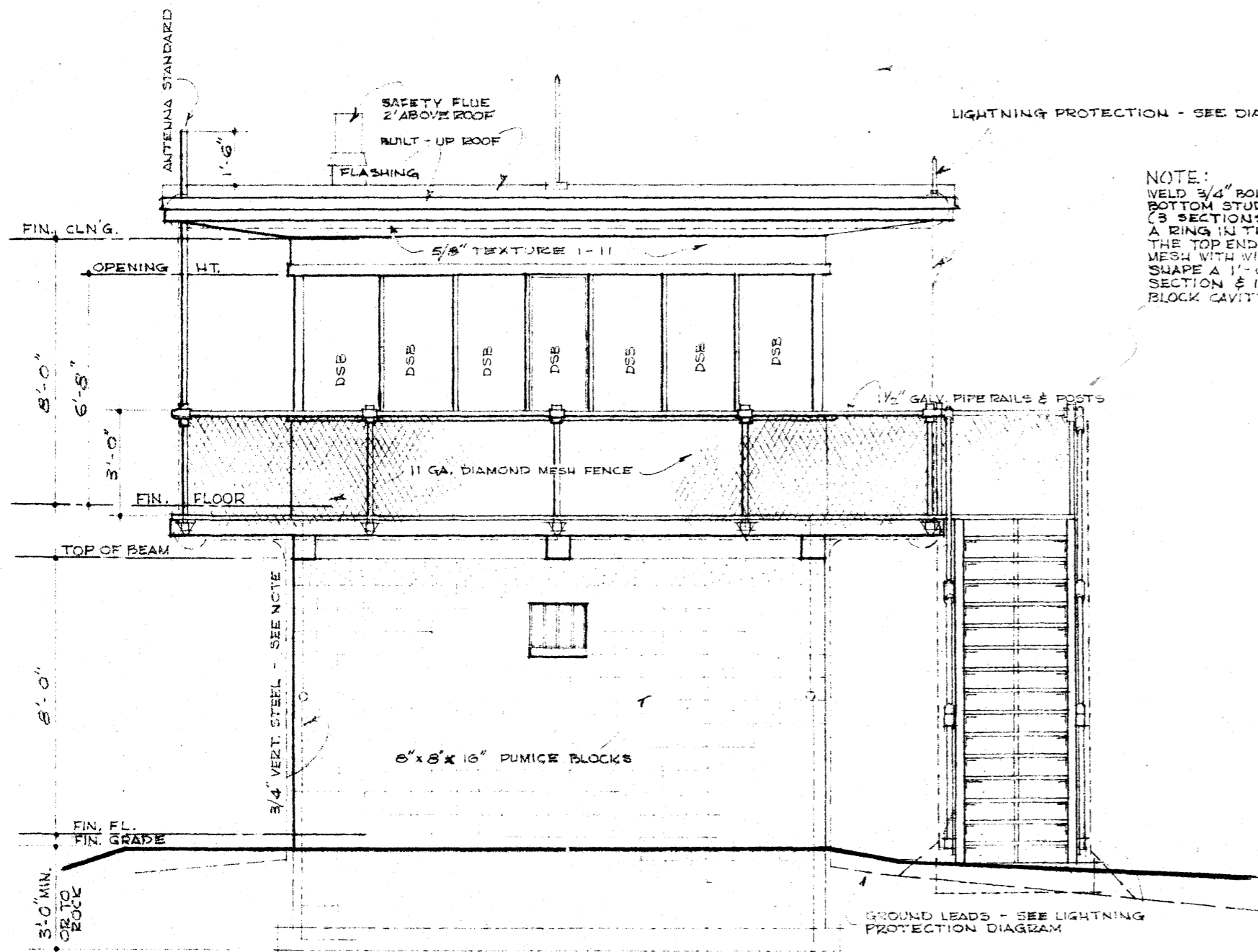
REVISED 12/12/62 BC

APPROVED: [Signature] DATE: 1/13/63

APPROVED: [Signature] DATE: 5/12/61

PLAN R-4# 80-B-1 SHEET 1 OF 5  
DESIGNED BY: C.A. ER-G DRAWN BY: BC TRACED BY: BC  
SCALE AS SHOWN CHECKED BY: DMH  
APPROVED: [Signature] DATE: [Blank]  
APPROVED: T.C. Burkholder DATE: 5/12/61

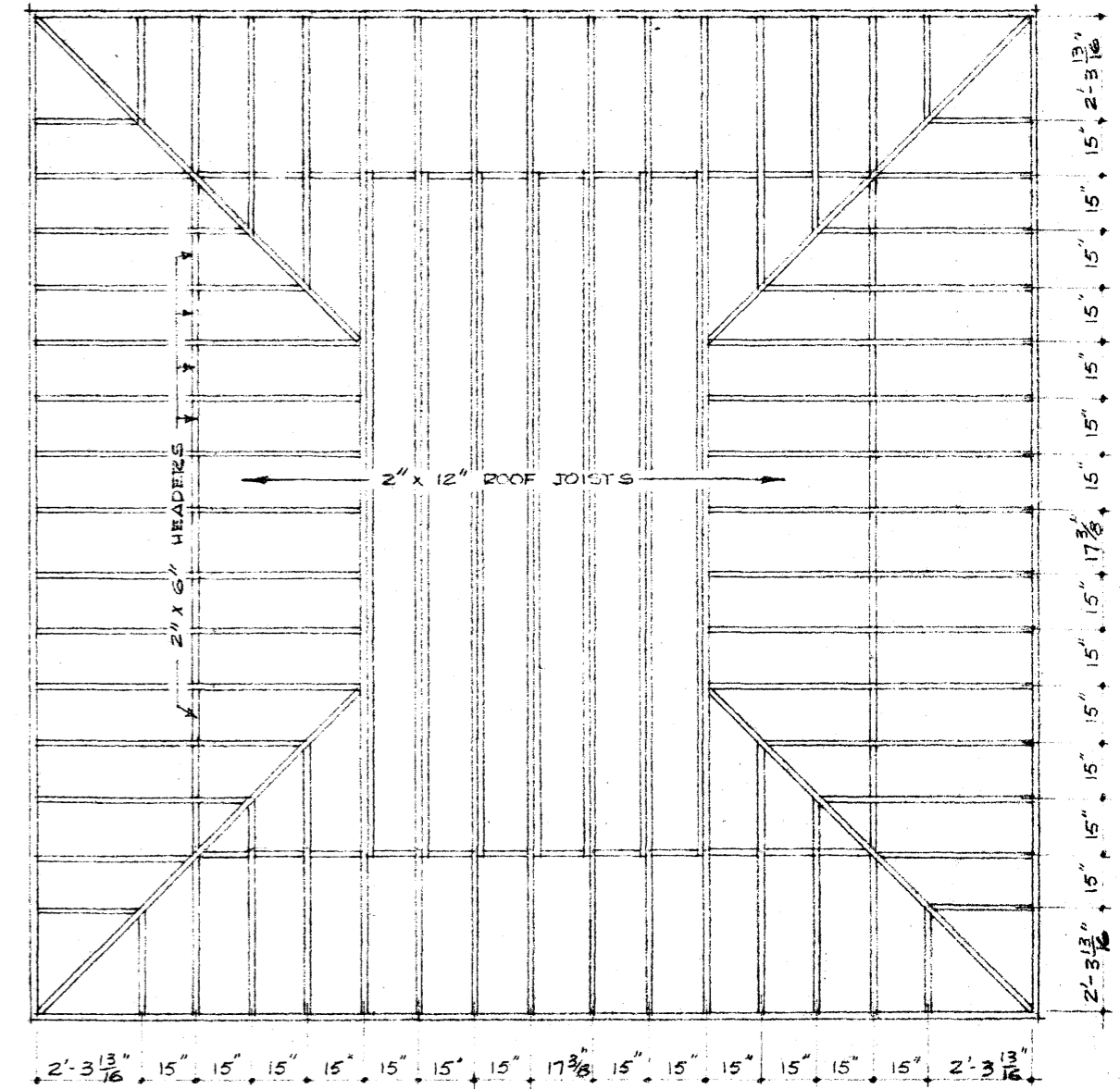
APPLY CANT STRIPS TO ROOF SO THAT THE GABLE OCCURS OVER THE CABIN ENTRANCE & CATWALK LANDING



FRONT ELEVATION

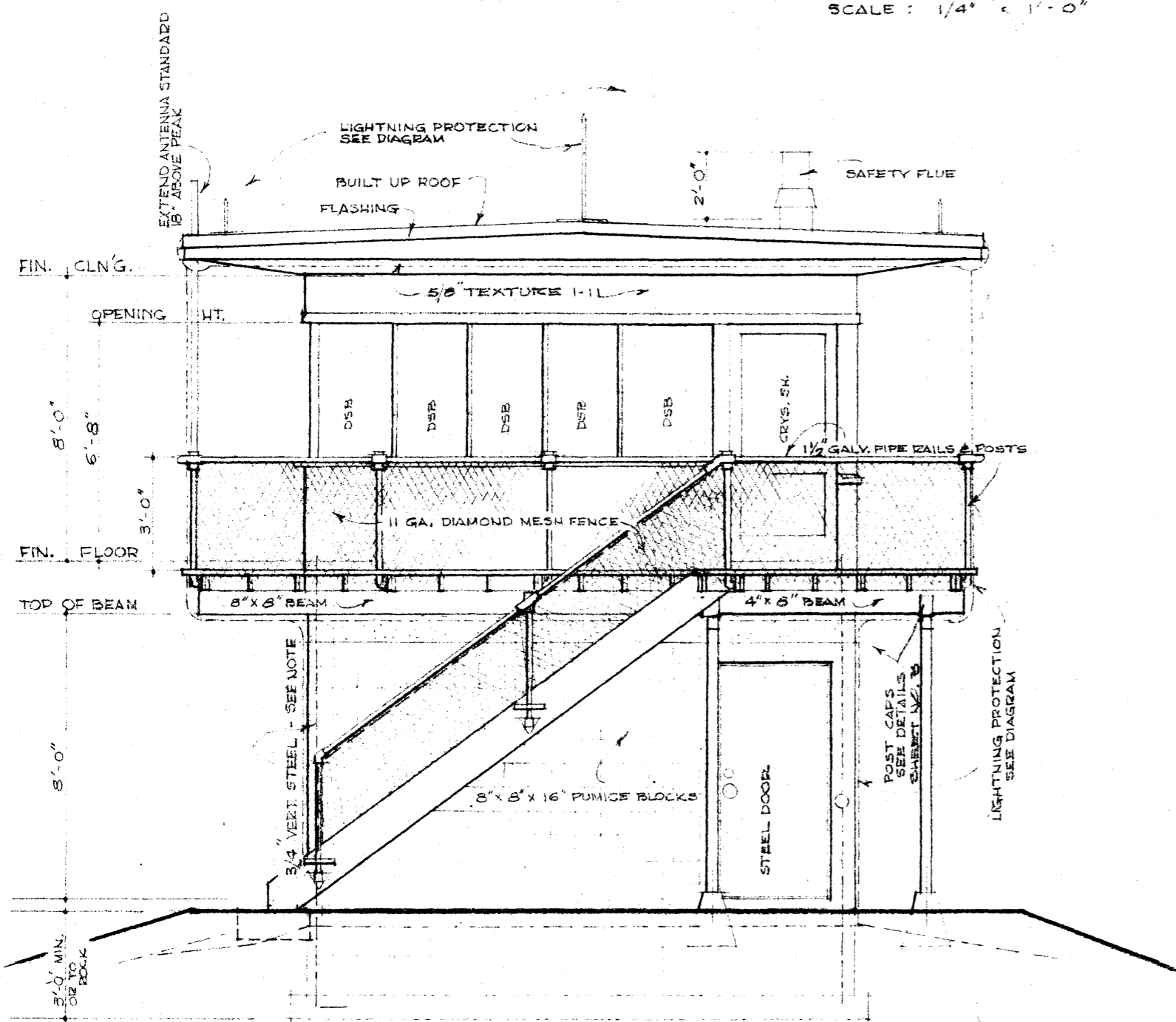
SCALE: 1/4" = 1'-0"

NOTE:  
 STEEL  
 WELD 3/4" BOLT TO UPPER END OF CORNER & EXTEND THRU BOTTOM STUD PLATE. FABRICATE ROD IN TWO SECTIONS, (3 SECTIONS FOR BASEMENTS HIGHER THAN 8') PROVIDING A RING IN THE LOWER END OF THE TOP SECTION. IN THE TOP END OF THE LOWER SECTION FASHION A HOOK TO MESH WITH WITH THIS RING & FIRMLY WIRE THE CONNECTION. SHAPE A 1'-0" BEND IN THE BOTTOM END OF THE LOWER SECTION & IMBED IN THE FOOTING. FILL THE CORNER BLOCK CAVITY (CONTAINING THE STEEL) WITH CONCRETE



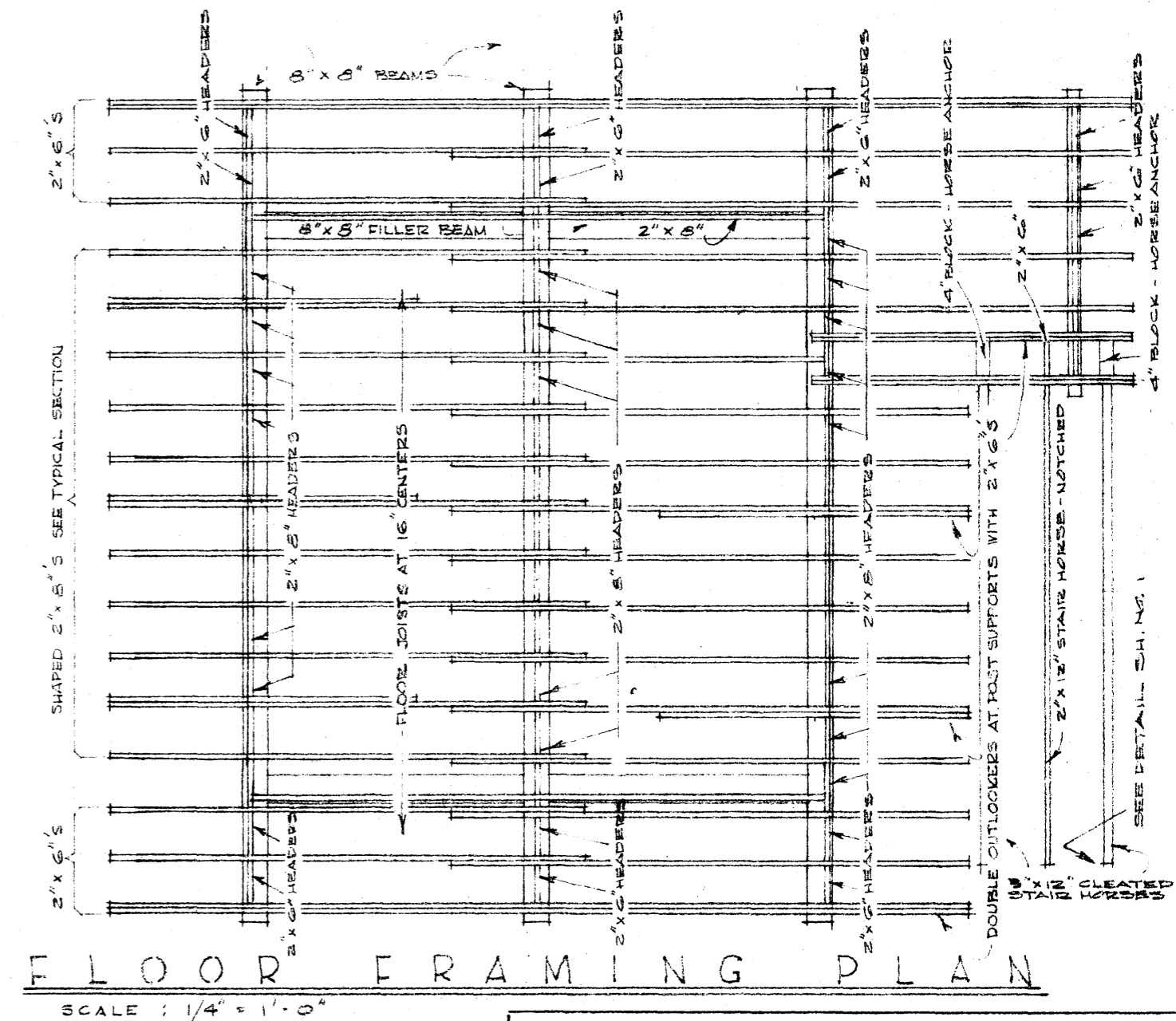
ROOF FRAMING PLAN

SCALE: 1/4" = 1'-0"



RIGHT ELEVATION

SCALE: 1/4" = 1'-0"



FLOOR FRAMING PLAN

SCALE: 1/4" = 1'-0"

U. S. DEPARTMENT OF AGRICULTURE  
 FOREST SERVICE

REGION FOUR H. M. HICKERY REGIONAL ENGINEER

LOOKOUT HOUSE

REVISED FROM R-6 FLAT-TOP LOOKOUT PLANS AS DESIGNED BY A.P.D.  
 & FROM R-4 SMITH KNOB LOOKOUT PLANS

REVISED 12/12/62 BC

APPROVED *[Signature]* DATE: 1/19/63

APPROVED *[Signature]* DATE:

PLAN R-4# 50-B-1

DESIGNED BY: C.A. RE-GF DRAWN: BC

SCALE AS SHOWN

APPROVED: *[Signature]* DATE: 5/12/61

APPROVED: *[Signature]* DATE: 5/12/61

SHEET 2 OF 5

TRACED: BC

CHECKED: DMH

DATE: 5/12/61

DATE: 5/12/61